



POLK STATE  
Lakeland Collegiate  
High School

# Annual Financial Report

Fiscal Year Ending June 30, 2023

*We are Polk.*<sup>TM</sup>



**POLK STATE COLLEGE LAKELAND COLLEGIATE HIGH SCHOOL**

**TABLE OF CONTENTS**

June 30, 2023

---

**FINANCIAL SECTION**

|   |       |
|---|-------|
| Independent Auditor’s Report.....                                 | 1-2   |
| Management’s Discussion and Analysis (unaudited).....             | 3-9   |
| Basic Financial Statements  |       |
| Statement of Net Position.....                                    | 10    |
| Statement of Revenues, Expenses, and Changes in Net Position..... | 11    |
| Statement of Cash Flows.....                                      | 12    |
| Notes to Financial Statements.....                                | 13-21 |

**OTHER REPORTS**

|   |       |
|---|-------|
| Independent Auditor’s Report on Internal Control over Financial Reporting and on Compliance and Other Matters Based on an Audit of Financial Statements Performed in Accordance with <i>Government Auditing Standards</i> ..... | 22-23 |
| Management Letter.....  | 24-25 |
| Management’s Response Letter.....   | 26    |



**(This page intentionally left blank)**

## **FINANCIAL SECTION**



## INDEPENDENT AUDITOR'S REPORT

To the Board of Trustees  
**Polk State College Collegiate High School**

### **Report on the Audit of the Financial Statements**

#### ***Opinion***

We have audited the accompanying financial statements of the Polk State College Collegiate High School, (the "School"), a charter school and division of Polk State College, as of and for the year ended June 30, 2023, and the related notes to the financial statements, which collectively comprise the School's basic financial statements as listed in the table of contents.

In our opinion, the financial statements referred to above present fairly, in all material respects, the respective financial position of Polk State College Collegiate High School, as of June 30, 2023, and the respective changes in financial position and cash flows for the year then ended in accordance with accounting principles generally accepted in the United States of America.

#### ***Basis for Opinion***

We conducted our audit in accordance with auditing standards generally accepted in the United States of America and the standards applicable to financial audits contained in *Government Auditing Standards*, issued by the Comptroller General of the United States. Our responsibilities under those standards are further described in the Auditor's Responsibilities for the Audit of the Financial Statements section of our report. We are required to be independent of the School and to meet our other ethical responsibilities, in accordance with the relevant ethical requirements relating to our audit. We believe that the audit evidence we have obtained is sufficient and appropriate to provide a basis for our audit opinion.

#### ***Emphasis of Matter***

As discussed in Note 1, the financial statements of the School are intended to present the financial position, the changes in financial position and cash flows of only that portion of the governmental activities, the business-type activities, each major fund, and the aggregate remaining fund information of Polk State College that is attributable to the transactions of the School. They do not purport to, and do not, present fairly the financial position of Polk State College as of June 30, 2023, the changes in its financial position or, where applicable, its cash flows for the year then ended in conformity with accounting principles generally accepted in the United States of America. Our opinion is not modified with respect to this matter.

#### ***Responsibilities of Management for the Financial Statements***

Management is responsible for the preparation and fair presentation of the financial statements in accordance with accounting principles generally accepted in the United States of America, and for the design, implementation, and maintenance of internal control relevant to the preparation and fair presentation of financial statements that are free from material misstatement, whether due to fraud or error.

In preparing the financial statements, management is required to evaluate whether there are conditions or events, considered in the aggregate, that raise substantial doubt about the School's ability to continue as a going concern for twelve months beyond the financial statement date, including any currently known information that may raise substantial doubt shortly thereafter.

---

INDEPENDENT AUDITOR'S REPORT  
(cont...)

***Auditor's Responsibilities for the Audit of the Financial Statements***

Our objectives are to obtain reasonable assurance about whether the financial statements as a whole are free from material misstatement, whether due to fraud or error, and to issue an auditor's report that includes our opinions. Reasonable assurance is a high level of assurance but is not absolute assurance and therefore is not a guarantee that an audit conducted in accordance with generally accepted auditing standards and *Government Auditing Standards* will always detect a material misstatement when it exists. The risk of not detecting a material misstatement resulting from fraud is higher than for one resulting from error, as fraud may involve collusion, forgery, intentional omissions, misrepresentations, or the override of internal control. Misstatements are considered material if there is a substantial likelihood that, individually or in the aggregate, they would influence the judgment made by a reasonable user based on the financial statements.

In performing an audit in accordance with generally accepted auditing standards and *Government Auditing Standards*, we:

- Exercise professional judgment and maintain professional skepticism throughout the audit.
- Identify and assess the risks of material misstatement of the financial statements, whether due to fraud or error, and design and perform audit procedures responsive to those risks. Such procedures include examining, on a test basis, evidence regarding the amounts and disclosures in the financial statements.
- Obtain an understanding of internal control relevant to the audit in order to design audit procedures that are appropriate in the circumstances, but not for the purpose of expressing an opinion on the effectiveness of the School's internal control. Accordingly, no such opinion is expressed.
- Evaluate the appropriateness of accounting policies used and the reasonableness of significant accounting estimates made by management, as well as evaluate the overall presentation of the financial statements.
- Conclude whether, in our judgment, there are conditions or events, considered in the aggregate, that raise substantial doubt about the School's ability to continue as a going concern for a reasonable period of time.

We are required to communicate with those charged with governance regarding, among other matters, the planned scope and timing of the audit, significant audit findings, and certain internal control-related matters that we identified during the audit.

***Other Reporting Required by Government Auditing Standards***

In accordance with *Government Auditing Standards*, we have also issued our report dated November 29, 2023, on our consideration of Polk State College Collegiate High School's internal control over financial reporting and on our tests of its compliance with certain provisions of laws, regulations, contracts, and grant agreements and other matters. The purpose of that report is to describe the scope of our testing of internal control over financial reporting and compliance and the results of that testing, and not to provide an opinion on internal control over financial reporting or on compliance. That report is an integral part of an audit performed in accordance with *Government Auditing Standards* in considering Polk State College Collegiate High School's internal control over financial reporting and compliance.

*Brynjulfson CPA, P.A.*

Brynjulfson CPA, P.A.  
Auburndale, Florida  
November 29, 2023

**POLK STATE COLLEGE  
POLK STATE COLLEGE LAKELAND COLLEGIATE HIGH SCHOOL  
A CHARTER SCHOOL AND DIVISION OF POLK STATE COLLEGE  
MANAGEMENT'S DISCUSSION AND ANALYSIS  
JUNE 30, 2023**

The management's discussion and analysis (MD&A) provides an overview of the financial position and activities of the Polk State College Lakeland Collegiate High School (School) for the year ended June 30, 2023 and should be read in conjunction with the financial statements and the notes thereto. This overview is required by Governmental Accounting Standards Board (GASB) codification section Co5 – *Colleges and Universities*. The MD&A, and the financial statements and notes thereto, are the responsibility of School management.

**FINANCIAL HIGHLIGHTS**

- Net position represents the residual interest in the School's assets after deducting liabilities. The School's net position at June 30, 2023 totaled \$2,836,771. The School's net position increased by \$478,365 or 20% during the current fiscal year as a result of total revenue of \$3,112,400 less total expenses of \$2,634,035.
- Governmental units are required to capitalize and depreciate capital assets including furniture, machinery and equipment. Florida State Colleges, of which the School is a division, have established guidelines for capitalizing assets and for depreciation. Furniture, machinery and equipment with a value less than \$5,000, all library books, and computer software will be expensed in the year of purchase. The School did not purchase furniture, machinery, and equipment that met the thresholds for capitalization during this fiscal year. Depreciation expense for this fiscal year totaled \$-0-.
- Fiscal year ended June 30, 2023 was the nineteenth year of existence for the School. Since prior period information is available for the 2022-23 fiscal year, comparative analysis data is presented in this management's discussion and analysis.

**USING THIS ANNUAL REPORT**

This report consists of three basic financial statements. The Statement of Net Position; the Statement of Revenues, Expenses, and Changes in Net Position; and the Statement of Cash Flows that provide information on the School as a whole and presents a long-term view of the School's finances. The following activities are included in the School's basic financial statements:

The School is a public charter school of the School District of Polk County, Florida (the "District"), open to Polk County public, private, or home school students who are at the 11th and 12th grade level. The purpose of the School is to provide academic and technical education for serious high school students who desire to undertake college-level study. The two-year curriculum gives students the opportunity to complete a high school diploma and an associate degree, simultaneously, in either academic transfer or technical education options.

The School is operated by Polk State College and is housed on the College's Lakeland Campus. Students attending the School enjoy full access to all college facilities, activities and services. Enrollment during this nineteenth year of operation was 344 students. Enrollment for the fiscal year 2023-2024 is estimated to be 350 students.



**POLK STATE COLLEGE  
POLK STATE COLLEGE LAKELAND COLLEGIATE HIGH SCHOOL  
A CHARTER SCHOOL AND DIVISION OF POLK STATE COLLEGE  
MANAGEMENT'S DISCUSSION AND ANALYSIS  
JUNE 30, 2023**

**THE STATEMENT OF NET POSITION AND THE STATEMENT OF REVENUES, EXPENSES,  
AND CHANGE IN NET POSITION**

One of the most important questions asked about the School's finances is, "Is the School as a whole better off or worse off as a result of the year's activities?" The Statement of Net Position and the Statement of Revenues, Expenses, and Changes in Net Position report information on the School as a whole and on its activities in a way that helps answer this question. When revenues and other support exceed expenses, the result is an increase in net position. When the reverse occurs, the result is a decrease in net position. The relationship between revenues and expenses may be thought of as the School's operating results.

These two statements report the School's net position and changes in them. One can think of the School's net position, the difference between assets, deferred outflows, liabilities and deferred inflows, as one way to measure the School's financial health, or financial position. Over time, increases or decreases in the School's net position are one indicator of whether its financial health is improving or deteriorating.

These statements include all assets, deferred outflows of resources, liabilities, and deferred inflows of resources using the accrual basis of accounting, which is similar to the accounting used by most private-sector institutions. All of the current year's revenues and expenses are taken into account regardless of when cash is received or paid.

A condensed statement of net position of the School for the fiscal years ended June 30, 2023 and June 30, 2022, is shown in the following table:

**Condensed Statement of Net Position at**

|                               | <b>6-30-2023</b> | <b>6-30-2022</b> |
|-------------------------------|------------------|------------------|
| <b>ASSETS</b>                 |                  |                  |
| Current Assets                | \$ 3,004,407     | \$ 2,516,264     |
| <b>TOTAL ASSETS</b>           | 3,004,407        | 2,516,264        |
| <b>LIABILITIES</b>            |                  |                  |
| Current Liabilities           | 34,632           | 62,842           |
| Noncurrent Liabilities        | 133,004          | 30,676           |
| <b>TOTAL LIABILITIES</b>      | 167,636          | 93,518           |
| <b>NET POSITION</b>           |                  |                  |
| Unrestricted                  | 2,836,771        | 2,358,406        |
| <b>TOTAL NET POSITION</b>     | \$ 2,836,771     | \$ 2,358,406     |
| <b>Change in Net Position</b> | \$ 478,365       |                  |

**POLK STATE COLLEGE  
POLK STATE COLLEGE LAKELAND COLLEGIATE HIGH SCHOOL  
A CHARTER SCHOOL AND DIVISION OF POLK STATE COLLEGE  
MANAGEMENT'S DISCUSSION AND ANALYSIS  
JUNE 30, 2023**

Revenues and expenses for the School for the 2022-23 and 2021-22 fiscal years are shown in the following table:

**Condensed Statement of Revenues, Expenses and Changes in Net Position  
for the fiscal years ended**

|  | <u>6-30-2023</u>           | <u>6-30-2022</u>           |
|--|----------------------------|----------------------------|
| <b>Operating Revenues</b>                  |                            |                            |
| Federal Grants & Contracts                 | \$ 301,337                 | \$ 162,113                 |
| State and Local Grants and Contracts       | 2,625,828                  | 2,370,807                  |
| Other Operating Revenues                   | -                          | -                          |
| <b>Total Operating Revenues</b>            | <u>2,927,165</u>           | <u>2,532,920</u>           |
| Less: Operating Expenses                   | <u>2,634,035</u>           | <u>2,237,006</u>           |
| <b>Operating Income (Loss)</b>             | 293,130                    | 295,914                    |
| <b>Nonoperating Revenue</b>                |                            |                            |
| Capital Grants, Contracts, Gifts, and Fees | <u>185,235</u>             | <u>173,486</u>             |
| <b>Change in Net Position</b>              | 478,365                    | 469,400                    |
| <b>Net Postion, Beginning of Year</b>      | <u>2,358,406</u>           | <u>1,889,006</u>           |
| <b>Net Postion, End of Year</b>            | <u><u>\$ 2,836,771</u></u> | <u><u>\$ 2,358,406</u></u> |

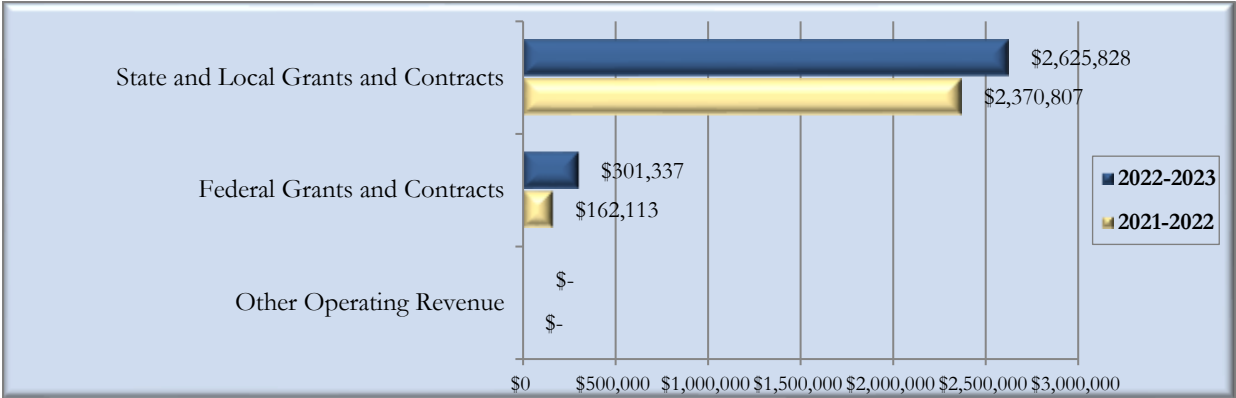
**Operating Revenue**

GASB Cod. Sec. Co5 categorizes revenues as either operating or non-operating. Operating revenues generally result from exchange transactions where each of the parties to the transaction either gives or receives something of equal or similar value.

**POLK STATE COLLEGE  
POLK STATE COLLEGE LAKELAND COLLEGIATE HIGH SCHOOL  
A CHARTER SCHOOL AND DIVISION OF POLK STATE COLLEGE  
MANAGEMENT’S DISCUSSION AND ANALYSIS  
JUNE 30, 2023**

The following chart presents the School’s operating revenues for the 2022-23 and 2021-22 fiscal years:

**Operating Revenues**



School operating revenues increased by \$394,245 or 16 percent, as compared to the prior fiscal year, primarily due to the following factors:

- State and local grants and contracts increased by \$255,021 or 11 percent primarily because of a four percent increase in enrollment and increased per-student funding of five percent. The school also received \$60,788 from the Florida School Recognition Program in 2023 and no such funds were received in 2022.
- Federal grants increased \$139,224 or 86 percent as a result of the Elementary and Secondary School Emergency Relief Fund (ESSER) funding in 2023 that exceeded the ESSER funding in 2022.

**POLK STATE COLLEGE  
POLK STATE COLLEGE LAKELAND COLLEGIATE HIGH SCHOOL  
A CHARTER SCHOOL AND DIVISION OF POLK STATE COLLEGE  
MANAGEMENT'S DISCUSSION AND ANALYSIS  
JUNE 30, 2023**

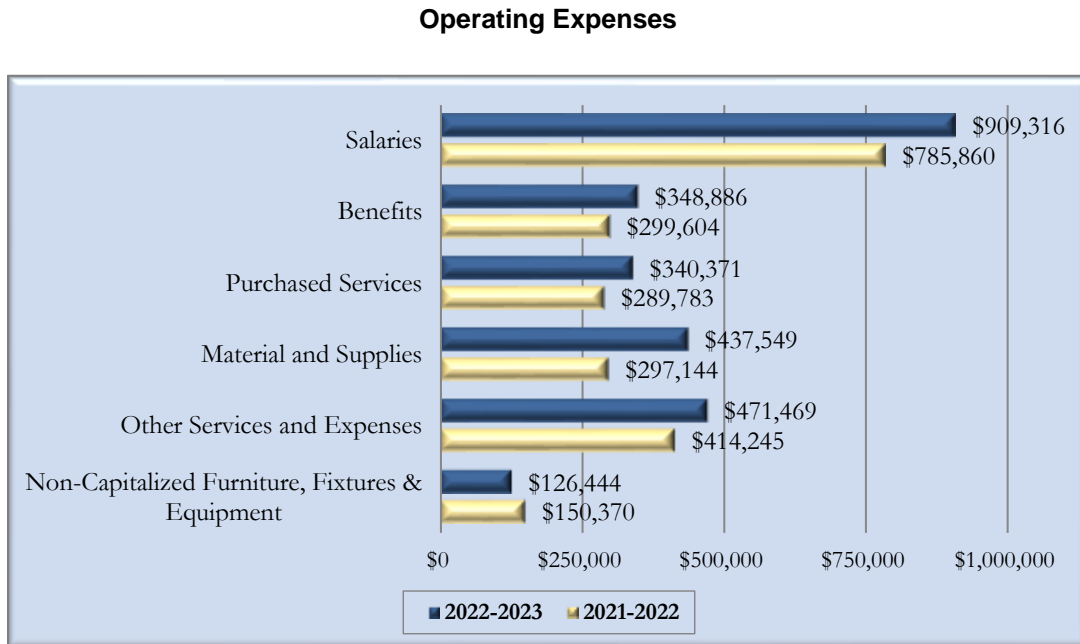
**Operating Expenses**

Expenses are categorized as operating or non-operating. The majority of the School's expenses are operating expenses as defined by GASB Cod. Sec. Co5.

Operating expenses for the School for the 2022-23 and 2021-22 fiscal years are presented in the following table:

|   | <b>6-30-2023</b>    | <b>6-30-2022</b>    |
|---|---------------------|---------------------|
| <b>Operating Expenses</b>                         |                     |                     |
| Salaries  | \$ 909,316          | \$ 785,860          |
| Benefits  | 348,886             | 299,604             |
| Purchased Services                                | 340,371             | 289,783             |
| Materials and Supplies                            | 437,549             | 297,144             |
| Other Services and Expenses                       | 471,469             | 414,245             |
| Non-Capitalized Furniture, Fixtures and Equipment | 126,444             | 150,370             |
| <b>Total Operating Expenses</b>                   | <b>\$ 2,634,035</b> | <b>\$ 2,237,006</b> |

The following chart presents the School's operating expenses for the 2021-22 and 2020-21 fiscal years:



**POLK STATE COLLEGE  
POLK STATE COLLEGE LAKELAND COLLEGIATE HIGH SCHOOL  
A CHARTER SCHOOL AND DIVISION OF POLK STATE COLLEGE  
MANAGEMENT'S DISCUSSION AND ANALYSIS  
JUNE 30, 2023**

School operating expenses increased by \$397,029 or 18 percent, as compared to the prior fiscal year, primarily due to the following significant factors:

- Salaries and benefits increased by \$172,738 or 16 percent mainly due to an increase in the opportunities for teacher to teach additional classes or provide grant-funded tutoring services during the year.
- Materials and supplies increased by \$140,405 or 47 percent due to the following:
  - Increased purchases of educational materials, software subscriptions and textbooks which increased by approximately \$67,000 in 2023.
  - Contributions towards the construction of food service facilities on the College campus as well as food service charges increased by approximately \$42,000.
  - Increased purchases of minor furniture and equipment which increased by approximately \$54,000 in 2023, much of which was reimbursed by Federal grant funds.

**THE STATEMENT OF CASH FLOWS**

Another way to assess the financial health of the School is to look at the Statement of Cash Flows. Its primary purpose is to provide relevant information about the cash receipts and cash payments of an entity during a period. The Statement of Cash Flows also helps users assess:

- An entity's ability to generate future net cash flows
- Its ability to meet its obligations as they come due
- Its need for external financing

A summary of the School's cash flows for the 2022-23 and 2021-22 fiscal years is presented in the following table:

**Condensed Statement of Cash Flows  
For the year ended**

|   | <b>6-30-23</b> | <b>6-30-22</b> |
|---|----------------|----------------|
| <b>Cash provided (Used) by:</b>                             |                |                |
| Operating Activities  | \$ 414,465     | \$ 207,219     |
| Noncapital Financing Activities                             | (599,368)      | (379,215)      |
| Capital and Related Financing Activities                    | 184,903        | 171,996        |
| <b>Net Increase (Decrease) in Cash and Cash Equivalents</b> | -              | -              |
| <b>Cash and Cash Equivalents, Beginning of Year</b>         | -              | -              |
| <b>Cash and Cash Equivalents, End of Year</b>               | <b>\$ -</b>    | <b>\$ -</b>    |

Because the School does not have its own bank account, cash flows can be measured in terms of the increase or decrease in the Due from Polk State College.

**POLK STATE COLLEGE  
POLK STATE COLLEGE LAKELAND COLLEGIATE HIGH SCHOOL  
A CHARTER SCHOOL AND DIVISION OF POLK STATE COLLEGE  
MANAGEMENT'S DISCUSSION AND ANALYSIS  
JUNE 30, 2023**

**CAPITAL ASSETS**

On June 30, 2023, the School had \$56,046 in capital assets, less accumulated depreciation of \$56,046, for net capital assets of \$-0-. Depreciation charges for the current and prior fiscal year totaled \$0. More information about the School's capital assets is presented in the notes to financial statements.

**LONG TERM OBLIGATIONS**

On June 30, 2023, the School had \$133,004 of noncurrent liabilities consisting of solely compensated absences payable, an increase of \$37,988 or 40 percent from the prior year. More information about the School's noncurrent liabilities is presented in the notes to financial statements.

**ECONOMIC FACTORS THAT WILL AFFECT THE FUTURE**

Polk State College's and the School's economic condition is closely tied to that of the State of Florida. For the 2023-2024 fiscal year, the School will continue its on-going efforts to contain costs and to continue to serve the School in its commitment to the growth of educational programs, improved student access, and overall excellence in the service to its students and community. The conservative budgetary stance taken by the College and School provides a framework for a focused response in support of our educational mission and provides financial stability in the face of limited economic growth and increased demand for State and College resources.

The School plans to enroll approximately 350 students in the 2023-24 fiscal year.

**REQUEST FOR INFORMATION**

Questions concerning information provided in the MD&A, and financial statements and notes thereto, or requests for additional information should be addressed to the Vice President, Finance, Polk State College, 999 Avenue H, Northeast, Winter Haven, Florida 33881.

**POLK STATE COLLEGE  
LAKELAND COLLEGIATE HIGH SCHOOL  
A CHARTER SCHOOL AND DIVISION OF POLK STATE COLLEGE  
STATEMENT OF NET POSITION  
As of June 30, 2023**

**ASSETS**

Current Assets:

|                                      |              |
|--------------------------------------|--------------|
| Due from Polk State College          | \$ 2,870,629 |
| Due from Other Governmental Agencies | 133,778      |
| Total Current Assets                 | 3,004,407    |

**TOTAL ASSETS**

3,004,407

**LIABILITIES**

Current Liabilities:

|                                  |        |
|----------------------------------|--------|
| Accounts Payable                 | 2,254  |
| Salary and Payroll Taxes Payable | 32,378 |
| Total Current Liabilities        | 34,632 |

Noncurrent Liabilities:

|                              |         |
|------------------------------|---------|
| Compensated Absences Payable | 133,004 |
| Total Noncurrent Liabilities | 133,004 |

**TOTAL LIABILITIES**

167,636

**NET POSITION**

|              |           |
|--------------|-----------|
| Unrestricted | 2,836,771 |
|--------------|-----------|

**TOTAL NET POSITION**

\$ 2,836,771

See Accompanying Notes to Financial Statements

**POLK STATE COLLEGE  
LAKELAND COLLEGIATE HIGH SCHOOL  
A CHARTER SCHOOL AND DIVISION OF POLK STATE COLLEGE  
STATEMENT OF REVENUES, EXPENSES, AND CHANGES IN NET POSITION  
For the fiscal year ended June 30, 2023**

**REVENUES**

Operating Revenues:

|                                      |            |
|--------------------------------------|------------|
| Federal Grants and Contracts         | \$ 301,337 |
| State and Local Grants and Contracts | 2,625,828  |
| Total Operating Revenues             | 2,927,165  |

**EXPENSES**

Operating Expenses:

|   |           |
|---|-----------|
| Salaries  | 909,316   |
| Benefits  | 348,886   |
| Purchased Services                                | 340,371   |
| Materials and Supplies                            | 437,549   |
| Other Services and Expenses                       | 471,469   |
| Non-Capitalized Furniture, Fixtures and Equipment | 126,444   |
| Total Operating Expenses                          | 2,634,035 |

|                               |         |
|-------------------------------|---------|
| <b>Operating Income(Loss)</b> | 293,130 |
|-------------------------------|---------|

**NONOPERATING REVENUES**

|  |         |
|--|---------|
| Capital Grants, Contracts, Gifts, and Fees | 185,235 |
| Total Nonoperating Revenues                | 185,235 |

|                               |         |
|-------------------------------|---------|
| <b>Change in Net Position</b> | 478,365 |
|-------------------------------|---------|

|  |           |
|--|-----------|
| <b>Net Position, Beginning of Year</b> | 2,358,406 |
|--|-----------|

|                                  |              |
|----------------------------------|--------------|
| <b>Net Position, End of Year</b> | \$ 2,836,771 |
|----------------------------------|--------------|

See Accompanying Notes to Financial Statements



**POLK STATE COLLEGE  
LAKELAND COLLEGIATE HIGH SCHOOL  
A CHARTER SCHOOL AND DIVISION OF POLK STATE COLLEGE  
STATEMENT OF CASH FLOWS  
For the fiscal year ended June 30, 2023**

|  |                          |
|--|--------------------------|
| <b>CASH FLOWS FROM OPERATING ACTIVITIES</b>  |                          |
| Grants and Contracts   | \$ 3,038,722             |
| Payments to Suppliers  | (934,276)                |
| Payments to Employees  | (907,614)                |
| Payments for Employee Benefits   | (310,898)                |
| Payments for Other Services and Expenses   | (471,469)                |
| <b>Net Cash Provided by (Used for) Operating Activities</b>  | <u>414,465</u>           |
| <b>CASH FLOWS FROM NONCAPITAL FINANCING ACTIVITIES</b>   |                          |
| Due from Polk State College  | (599,368)                |
| <b>Net Cash Provided by (Used for) Noncapital Financing Activities</b>                                       | <u>(599,368)</u>         |
| <b>CASH FLOWS FROM CAPITAL AND RELATED FINANCING ACTIVITIES</b>  |                          |
| Capital Grants and Gifts   | 184,903                  |
| <b>Net Cash Provided by (Used for) Capital and Related Financing Activities</b>                              | <u>184,903</u>           |
| <b>Net Increase (Decrease) in Cash and Cash Equivalents</b>  | -                        |
| <b>Cash and Cash Equivalents, Beginning of Year</b>  | <u>-</u>                 |
| <b>Cash and Cash Equivalents, End of Year</b>  | <u><u>\$ -</u></u>       |
| <b>RECONCILIATION OF OPERATING INCOME (LOSS)<br/>TO NET CASH PROVIDED BY (USED FOR) OPERATING ACTIVITIES</b> |                          |
| Operating Income (Loss)  | \$ 293,130               |
| Adjustments to Reconcile Operating Income (Loss)<br>to Net Cash Provided by (Used for) Operating Activities: |                          |
| (Increase) decrease in Due from Other Governmental Agencies  | 111,557                  |
| Decrease (increase) in Accounts Payable  | (29,912)                 |
| Decrease (increase) Salary and Payroll Taxes Payable   | 1,702                    |
| Decrease (increase) Compensated Absences Payable   | 37,988                   |
| <b>Net Cash Provided by (Used for) Operating Activities</b>  | <u><u>\$ 414,465</u></u> |

See Accompanying Notes to Financial Statements

**POLK STATE COLLEGE  
POLK STATE COLLEGE LAKELAND COLLEGIATE HIGH SCHOOL  
A CHARTER SCHOOL AND DIVISION OF POLK STATE COLLEGE  
NOTES TO FINANCIAL STATEMENTS  
JUNE 30, 2023**

**NOTE 1 – SUMMARY OF SIGNIFICANT ACCOUNTING POLICIES**

**Reporting Entity.** Polk State College Lakeland Collegiate High School (School) is a charter school and division of Polk State College (College). The School is organized pursuant to Section 1002.33, Florida Statutes and is governed by the Board of Trustees of the College who are appointed by the governor of the State of Florida.

The general operating authority of the School is contained in Section 1002.33, Florida Statutes. The School operates under a charter of the sponsoring school district, the School District of Polk County, Florida (District). The existing charter contract expires on June 30, 2029. The District may terminate the charter if good cause is shown.

**Basis of Presentation.** As a division of the College, the School's accounting policies conform with accounting principles generally accepted in the United States of America applicable to public colleges and universities as prescribed by the Governmental Accounting Standards Board (GASB). The GASB is responsible for establishing GAAP for public colleges and universities through its statements (GASBS) and Interpretations (GASBI). The National Association of College and University Business Officers (NACUBO) also provided the College with recommendations prescribed in accordance with generally accepted accounting principles promulgated by GASB. The College reports as an entity engaged in only business-type activities. The College has adopted the accrual basis of accounting and entity wide reporting including the following components:

- Management's Discussion and Analysis
- Basic Financial Statements:
  - Statement of Net Position
  - Statement of Revenues, Expenses, and Changes in Net Position
  - Statement of Cash Flows
  - Notes to Financial Statements

**Basis of Accounting.** Basis of accounting refers to when revenues, expenses, and related assets, deferred outflows of resources, liabilities and deferred inflows of resources are recognized in the accounts and reported in the financial statements. Specifically, it relates to the timing of the measurements made, regardless of the measurement focus applied. As a division of the College, the School's financial statements are presented using the economic resources measurement focus and the accrual basis of accounting. Revenues, expenses, gains, losses, assets, deferred outflows of resources, liabilities and deferred inflows of resources resulting from exchange and exchange-like transactions are recognized when the exchange takes place. Revenues, expenses, gains, losses, assets, deferred outflows of resources, liabilities and deferred inflows of resources resulting from non-exchange activities are generally recognized when all applicable eligibility requirements, including time requirements, are met. The School follows GASB standards of accounting and financial reporting.

**POLK STATE COLLEGE  
POLK STATE COLLEGE LAKELAND COLLEGIATE HIGH SCHOOL  
A CHARTER SCHOOL AND DIVISION OF POLK STATE COLLEGE  
NOTES TO FINANCIAL STATEMENTS  
JUNE 30, 2023**

The School's principal operating activity is instruction. Operating revenues and expenses generally include all fiscal transactions directly related to instruction as well as administration, academic support, student services, and depreciation of capital assets. Non-operating revenues include capital outlay funding as provided under Section 1013.62, Florida Statutes as well as grants or contributions restricted for capital construction or equipment.

The statement of net position is presented in a classified format to distinguish between current and noncurrent assets and liabilities. When both restricted and unrestricted resources are available to fund certain programs, it is the School's policy to first apply the restricted resources to such programs followed by the use of the unrestricted resources.

The statement of revenues, expenses, and changes in net position is presented by major sources.

The statement of cash flows is presented using the direct method in compliance with GASB Cod. Sec. 2450 – *Cash Flow Statements*.

**Inventory.** Supplies inventory is immaterial and such items are charged to expense when purchased.

**Receivables.** Consist primarily of amounts due from other governments. All receivables are deemed collectible and no allowance for uncollectible accounts is considered necessary.

**Deferred Outflows/Inflows of Resources.** In addition to assets, the statement of net position will sometimes report a separate section for deferred outflows of resources. This separate financial statement element, deferred outflows of resources, represents a consumption of net position that applies to a future period(s) and will not be recognized as an outflow of resources (expense) until that time.

In addition to liabilities, the statement of net position will sometimes report a section for deferred inflows of resources. This separate financial statement element, deferred inflows of resources, represents an acquisition of net position that applies to a future period(s) and so will not be recognized as an inflow of resources (revenue) until that time.

**Capital Assets.** School capital assets include furniture, machinery, and equipment. These assets are capitalized and recorded at cost at the date of acquisition or acquisition value at the date received in the case of gifts and purchase of State surplus property. Additions, improvements, and other outlays that significantly extend the useful life of an asset are capitalized. Other cost incurred for repairs and maintenance are expensed as incurred. The School has a capitalization threshold of \$5,000 for tangible personal property and \$25,000 for buildings and other structures and improvements. Depreciation is computed on the straight-line basis over the estimated useful life of 3 years for furniture, machinery, and equipment.

**POLK STATE COLLEGE  
POLK STATE COLLEGE LAKELAND COLLEGIATE HIGH SCHOOL  
A CHARTER SCHOOL AND DIVISION OF POLK STATE COLLEGE  
NOTES TO FINANCIAL STATEMENTS  
JUNE 30, 2023**

**Support Allocation/Dual Enrollment Charge/Facility Use Charge.** The College segregates direct instructional costs from support costs within the College's accounting information system and performs an annual analysis to systematically allocate these support costs to the different functional classifications of direct instruction to ultimately arrive at a total cost per FTE for each education segment. In previous years the College charged a support cost allocation to the School at a rate per FTE not to exceed this amount.

For the fiscal year ending June 30, 2023, the College did not charge an FTE driven indirect support allocation charge rather moved to a dual enrollment charge and facility use charge to allocate some of the College support costs to the School.

The dual enrollment charge totaled \$471,469 and was determined by the number of credit hours taken by School students in College instructed classes. The amount charged per credit hour was \$71.98 as established by Florida Statute 1009.23(3)(a).

The College allocates a facility use charge equal to the total capital outlay revenue received by the School and this charge reflects the use costs of building and grounds maintenance, utilities, custodial services, security and insurance and totaled \$185,235 for the year ended June 30, 2023.

**Use of Estimates.** The preparation of financial statements in conformity with generally accepted accounting principles requires management to make use of estimates and assumptions that affect the reported amounts in the financial statements. Actual results could differ significantly from those estimates.

**Equity Classifications.** The difference between (a) assets and deferred outflows of resources and (b) liabilities and deferred inflows of resources is classified as net position and displayed in three components:

- a) *Investment in capital assets* - Consists of capital assets including restricted capital assets, net of accumulated depreciation.
- b) *Restricted net position* - Consists of net position with constraints placed in its use either by 1) external groups such as creditors, grantors, contributors, or laws or regulations of other governments, or 2) law through constitutional provisions or enabling legislation.
- c) *Unrestricted net position* - Consists of the net amount of assets, deferred outflows of resources, liabilities and deferred inflows of resources that are not included in the determination of the investment in capital assets or the restricted component of net position.

When both restricted and unrestricted net position are available for use, it is the School's policy to use restricted net position first, then unrestricted net position as they are needed.

**NOTE 2 – DUE FROM POLK STATE COLLEGE**

The School does not have its own bank accounts and, therefore, the amount reported as "Due from Polk State College" represents the School's equity in the College's current resources. Because the College's current resources are invested in a variety of different types of assets, this balance is not reported as cash.

**POLK STATE COLLEGE  
POLK STATE COLLEGE LAKELAND COLLEGIATE HIGH SCHOOL  
A CHARTER SCHOOL AND DIVISION OF POLK STATE COLLEGE  
NOTES TO FINANCIAL STATEMENTS  
JUNE 30, 2023**

**NOTE 3 – CAPITAL ASSETS**

Capital assets activity for the fiscal year ended June 30, 2023 is shown below:

| Description                                  | Beginning<br>Balance | Additions   | Reductions     | Ending<br>Balance |
|--|----------------------|-------------|----------------|-------------------|
| Depreciable Capital Assets:                  |                      |             |                |                   |
| Furniture, Machinery, and Equipment          | \$ 65,611            | \$ -        | \$ (9,565)     | \$ 56,046         |
| <b>Total Depreciable Capital Assets</b>      | <u>65,611</u>        | <u>-</u>    | <u>(9,565)</u> | <u>56,046</u>     |
| Less, Accumulated Depreciation               |                      |             |                |                   |
| Furniture, Machinery, and Equipment          | (65,611)             | -           | 9,565          | (56,046)          |
| <b>Total Accumulated Depreciation</b>        | <u>(65,611)</u>      | <u>-</u>    | <u>9,565</u>   | <u>(56,046)</u>   |
| <b>Total Depreciable Capital Assets, Net</b> | <u>\$ -</u>          | <u>\$ -</u> | <u>\$ -</u>    | <u>\$ -</u>       |

**NOTE 4 – LONG-TERM LIABILITIES**

Long-term liabilities activity for the fiscal year ended June 30, 2023, is shown below:

| Descriptions                 | Beginning<br>Balance | Additions | Reductions | Ending<br>Balance | Current<br>Portion |
|------------------------------|----------------------|-----------|------------|-------------------|--------------------|
| Compensated Absences Payable | \$ 95,016            | \$ 37,988 | \$ -       | \$ 133,004        | \$ -               |
| Less amount due in one year  |                      |           |            | -                 |                    |
| Net due after one year       |                      |           |            | <u>\$ 133,004</u> |                    |

School employees may accrue annual vacation and sick leave on length of service, subject to certain limitations regarding the amount that will be paid upon termination. The School reports a liability for the accrued leave; however, State appropriations fund only the portion of accrued leave that is paid in the current fiscal year. Although the School expects the liability to be funded primarily from future appropriations, generally accepted accounting principles do not permit the recording of a receivable in anticipation of future appropriations. On June 30, 2023, the estimated liability for compensated absences, which includes the School's share of the Florida Retirement System, totaled \$133,004. None of this amount is considered a current liability that is expected to be paid in the coming fiscal year. The School calculates its current portion of compensated absences liability by applying the remaining percentage of time for those employees in the Deferred Retirement Option Program plus the total payouts of all employees who have notified the School that they are leaving employment during the fiscal year.

**POLK STATE COLLEGE  
POLK STATE COLLEGE LAKELAND COLLEGIATE HIGH SCHOOL  
A CHARTER SCHOOL AND DIVISION OF POLK STATE COLLEGE  
NOTES TO FINANCIAL STATEMENTS  
JUNE 30, 2023**

**NOTE 5 – STATE RETIREMENT PROGRAMS**

The School follows GASB Cod. Sec. P20 for reporting the employers' proportionate share of the net pension liabilities for the Florida Retirement System (FRS) defined benefit pension plans.

**General Information about the Florida Retirement System (FRS)**

The FRS was created in Chapter 121, Florida Statutes, to provide a defined benefit pension plan for participating public employees. The FRS was amended in 1998 to add the Deferred Retirement Option Program under the defined benefit plan and amended in 2000 to provide a defined contribution plan alternative to the defined benefit plan for FRS members effective July 1, 2002. This integrated defined contribution pension plan is the FRS Investment Plan.

The Retiree Health Insurance Subsidy (HIS) Program is a cost-sharing multiple employer defined benefit pension plan to assist retired members of any State-administered retirement system in paying the costs of health insurance under Section 112.363, Florida Statutes.

Chapter 121, Florida Statutes, also provides for nonintegrated, optional retirement programs in lieu of the FRS to certain members of the Senior Management Service Class (SMSC) employed by the State and faculty and specified employees of State colleges.

Essentially all regular employees of the College are eligible to enroll as members of the State-administered FRS. Provisions relating to the FRS are established by Chapters 121 and 122, Florida Statutes; Chapter 112, Part IV, Florida Statutes; Chapter 238, Florida Statutes; and FRS Rules, Chapter 60S, Florida Administrative Code; wherein eligibility, contributions, and benefits are defined and described in detail. Such provisions may be amended at any time by further action from the Florida Legislature. The FRS is a single retirement system administered by the Florida Department of Management Services, Division of Retirement, and consists of two cost-sharing multiple employer defined benefit plans and other nonintegrated programs. A comprehensive annual financial report of the FRS, which includes its financial statements, required supplementary information, and other relevant information, is available from the Florida Department of Management Services' Web site ([www.dms.myflorida.com](http://www.dms.myflorida.com)).

**Florida Retirement System (FRS) Defined Benefit Pension Plan**

*Plan Description.* The FRS Pension Plan (Plan) is a cost-sharing multiple employer defined benefit pension plan, with a Deferred Retirement Option Program (DROP) for eligible employees. The general classes of membership are as follows:

- *Regular Class* – Members of the FRS who do not qualify for membership in the other classes.
- *Senior Management Service Class (SMSC)* – Members in senior management level positions.

Employees enrolled in the Plan prior to July 1, 2011, vest at 6 years of creditable service and employees enrolled in the Plan on or after July 1, 2011, vest at 8 years of creditable service. All vested members, enrolled prior to July 1, 2011, are eligible for normal retirement benefits at age 62 or at any age after 30 years of service. All members enrolled in the Plan on or after July 1, 2011, once vested, are eligible for normal retirement benefits at age 65 or any time after 33 years of creditable service. The Plan also includes an early retirement provision; however, there is a benefit reduction for each year a member retires before his or her normal retirement date. The Plan provides retirement, disability, death benefits, and annual cost-of-living adjustments to eligible participants.

**POLK STATE COLLEGE  
POLK STATE COLLEGE LAKELAND COLLEGIATE HIGH SCHOOL  
A CHARTER SCHOOL AND DIVISION OF POLK STATE COLLEGE  
NOTES TO FINANCIAL STATEMENTS  
JUNE 30, 2023**

The Deferred Retirement Option Program (DROP), subject to provisions of Section 121.091, Florida Statutes, permits employees eligible for normal retirement under the Plan to defer receipt of monthly benefit payments while continuing employment with an FRS-participating employer. An employee may participate in DROP for a period not to exceed 60 months after electing to participate. During the period of DROP participation, deferred monthly benefits are held in the FRS Trust Fund and accrue interest.

*Benefits Provided.* Benefits under the Plan are computed on the basis of age and/or years of service, average final compensation, and service credit. Credit for each year of service is expressed as a percentage of the average final compensation. For members initially enrolled before July 1, 2011, the average final compensation is the average of the 5 highest fiscal years' earnings; for members initially enrolled on or after July 1, 2011, the average final compensation is the average of the 8 highest fiscal years' earnings. The total percentage value of the benefit received is determined by calculating the total value of all service, which is based on retirement plan and/or the class to which the member belonged when the service credit was earned. Members are eligible for in-line-of-duty or regular disability and survivors' benefits. The following chart shows the percentage value for each year of service credit earned:

| <u>Class, Initial Enrollment, and Retirement Age/Years of Service</u>    | <u>% Value</u> |
|--|----------------|
| <b>Regular Class members initially enrolled before July 1, 2011</b>      |                |
| Retirement up to age 62 or up to 30 years of service                     | 1.60           |
| Retirement at age 63 or with 31 years of service                         | 1.63           |
| Retirement at age 64 or with 32 years of service                         | 1.65           |
| Retirement at age 65 or with 33 or more years of service                 | 1.68           |
| <b>Regular Class members initially enrolled on or after July 1, 2011</b> |                |
| Retirement up to age 65 or up to 33 years of service                     | 1.60           |
| Retirement at age 66 or with 34 years of service                         | 1.63           |
| Retirement at age 67 or with 35 years of service                         | 1.65           |
| Retirement at age 68 or with 36 or more years of service                 | 1.68           |
| <b>Senior Management Service Class</b>                                   | <b>2.00</b>    |

As provided in Section 121.101, Florida Statutes, if the member is initially enrolled in the FRS before July 1, 2011, and all service credit was accrued before July 1, 2011, the annual cost-of-living adjustment is 3 percent per year. If the member is initially enrolled before July 1, 2011, and has service credit on or after July 1, 2011, there is an individually calculated cost-of-living adjustment. The annual cost-of-living adjustment is a proportion of 3 percent determined by dividing the sum of the pre-July 2011 service credit by the total service credit at retirement multiplied by 3 percent. Plan members initially enrolled on or after July 1, 2011, will not have a cost-of-living adjustment after retirement.

**HIS Defined Benefit Pension Plan**

*Plan Description.* The HIS Pension Plan (HIS Plan) is a cost-sharing multiple-employer defined benefit pension plan established under Section 112.363, Florida Statutes, and may be amended by the Florida Legislature at any time. The benefit is a monthly payment to assist retirees of State-administered retirement systems in paying their health insurance costs and is administered by the Florida Department of Management Services, Division of Retirement.

**POLK STATE COLLEGE  
POLK STATE COLLEGE LAKELAND COLLEGIATE HIGH SCHOOL  
A CHARTER SCHOOL AND DIVISION OF POLK STATE COLLEGE  
NOTES TO FINANCIAL STATEMENTS  
JUNE 30, 2023**

*Benefits Provided.* Eligible retirees and beneficiaries receive a monthly HIS payment as determined by years of creditable service and subject to a minimum and maximum monthly benefit pursuant to Section 112.363, Florida Statutes. To be eligible to receive a HIS benefit, a retiree under a State-administered retirement system must provide proof of health insurance coverage, which can include Medicare.

*Contributions:* The Florida Legislature establishes contribution rates for participating employers and employees. Contribution rates during the 2022-23 fiscal year were:

| Class  | Percent of Gross Salary |                 |
|--|-------------------------|-----------------|
|  | Employee                | Employer<br>(A) |
| Florida Retirement System, Regular   | 3.00                    | 11.91           |
| Florida Retirement System, SMSC  | 3.00                    | 31.57           |
| Deferred Retirement Option Program – Applicable<br>to Members from all the above classes | 0.00                    | 18.60           |

Notes: (A) – Employer rates include 1.66 percent for the post-employment health insurance subsidy. Also, employer rates, other than for DROP participants, include .06 percent for administrative costs of the Public Employee Optional Retirement Plan.

The School’s contributions to the FRS plan totaled \$104,081 for the fiscal year ended June 30, 2023 and included \$63,898 of normal contributions and \$20,183 of contributions to the investment plan.

Management has elected not to allocate pension related deferred outflows of resources, deferred inflows of resources or the net pension liability to the School’s financial statements. Because of this, the disclosures required by GASB Cod. Sec. P20 are not presented in the School’s financial statements.

A complete presentation in accordance with GASB Cod. Sec. P20 of the pension related elements, financial statement disclosures and required supplementary information for the College can be found in the annual audited financial statements of Polk State College which is available by contacting the Executive Director, Business Affairs/Controller, Polk State College, 999 Avenue H, Northeast, Winter Haven, Florida 33881.

**NOTE 6 – RISK MANAGEMENT**

The College is exposed to various risks of loss related to torts; theft of, damage to, and destruction of assets; errors and omissions; injuries to employees; and natural disasters. The College provided coverage for these risks primarily through the Florida College System Risk Management Consortium (Consortium), which was created under authority of Section 1001.64(27), Florida Statutes, by the boards of trustees of the Florida public colleges for the purpose of joining a cooperative effort to develop, implement, and participate in a coordinated Statewide College risk management program. The Consortium is self-sustaining through member assessments (premiums) and purchases excess insurance through commercial companies for claims in excess of specified amounts. Excess insurance from commercial companies provided coverage of up to \$100 million for property insurance. Insurance coverage obtained through the Consortium included fire and extended property, general and automobile liability, workers’ compensation, health, life, and other liability coverage. Settled claims resulting from these risks have not exceeded commercial coverage in any of the past 3 fiscal years. Bonding of the members of the College Board of Trustees is provided through purchased commercial insurance with minimum deductibles.

**NOTE 7 – LITIGATION**

The School has no pending or threatened legal actions.



**POLK STATE COLLEGE  
POLK STATE COLLEGE LAKELAND COLLEGIATE HIGH SCHOOL  
A CHARTER SCHOOL AND DIVISION OF POLK STATE COLLEGE  
NOTES TO FINANCIAL STATEMENTS  
JUNE 30, 2023**

**NOTE 8 – SCHEDULE OF DISTRICT SCHOOL BOARD REVENUE SOURCES**

Revenues for current operations are received primarily through the Polk County District School Board pursuant to the funding provisions included in the School's charter. In accordance with the funding provisions of the charter and Section 1002.33(17), Florida Statutes, the School reports the number of full-time equivalent (FTE) students and related data to the District. Under the provisions of Section 1011.62, Florida Statutes, the District reports the number of full-time equivalent (FTE) students and related data to the Florida Department of Education (FDOE) for funding through the Florida Education Finance Program. Funding for the School is adjusted during the year to reflect the revised calculations by the FDOE based on the actual weighted full-time equivalent students reported by the School during the designated full-time equivalent student survey periods.

Section 1002.33(20)(a)2, Florida Statutes allows the District to withhold an administrative fee equal to 2% (high performing charter school rate) of the School's funding provided by the Florida Education Financing Program (FEFP) and totaled \$35,751 for the 2022-23 fiscal year. This expense is reflected as a component of purchased services expense in the accompanying statement of revenues, expenses and changes in net position.

**POLK STATE COLLEGE  
POLK STATE COLLEGE LAKELAND COLLEGIATE HIGH SCHOOL  
A CHARTER SCHOOL AND DIVISION OF POLK STATE COLLEGE  
NOTES TO FINANCIAL STATEMENTS  
JUNE 30, 2023**

The following is a schedule of Polk County District School Board revenue sources and amounts:

| <b>Source</b>  | <b>Amount</b>       |
|--|---------------------|
| Base Funding   | \$ 1,675,027        |
| Class Size Reduction   | 307,446             |
| Elementary and Secondary School Emergency Relief Fund          | 298,153             |
| Dual Enrollment  | 176,533             |
| Discretionary Millage Compression Allocation                   | 122,353             |
| Discretionary Local Effort                                     | 115,507             |
| Teacher Salary Increase Allocation                             | 80,040              |
| School recognition program                                     | 60,788              |
| Instructional Material Allocation                              | 28,805              |
| Safe Schools   | 20,736              |
| Total Funds Compression Allocation                             | 20,133              |
| Reading Allocation   | 16,735              |
| Title II   | 3,184               |
| Teacher Supply Allocation                                      | 1,725               |
| <b>Subtotal</b>  | <b>\$ 2,927,165</b> |
| Capital Outlay   | 185,235             |
| <b>Total Revenue through Polk County District School Board</b> | <b>3,112,400</b>    |
| <b>Total Revenue</b>   | <b>\$ 3,112,400</b> |

## **OTHER REPORTS**

INDEPENDENT AUDITOR'S REPORT ON INTERNAL CONTROL OVER FINANCIAL REPORTING AND  
ON COMPLIANCE AND OTHER MATTERS BASED ON AN AUDIT OF FINANCIAL STATEMENTS  
PERFORMED IN ACCORDANCE WITH *GOVERNMENT AUDITING STANDARDS*

To the Board of Trustees  
**Polk State College Collegiate High School**

We have audited, in accordance with the auditing standards generally accepted in the United States of America and the standards applicable to financial audits contained in *Government Auditing Standards* issued by the Comptroller General of the United States, the financial statements Polk State College Collegiate High School (the "School") a charter school and division of Polk State College, as of and for the year ended June 30, 2023, and the related notes to the financial statements, which collectively comprise the School's basic financial statements and have issued our report thereon dated November 29, 2023.

**Internal Control over Financial Reporting**

In planning and performing our audit of the financial statements, we considered the School's internal control over financial reporting (internal control) to determine the audit procedures that are appropriate in the circumstances for the purpose of expressing our opinions on the financial statements, but not for the purpose of expressing an opinion on the effectiveness of the School's internal control. Accordingly, we do not express an opinion on the effectiveness of the School's internal control.

A *deficiency in internal control* exists when the design or operation of a control does not allow management or employees, in the normal course of performing their assigned functions, to prevent, or detect and correct, misstatements on a timely basis. A *material weakness* is a deficiency, or a combination of deficiencies, in internal control such that there is a reasonable possibility that a material misstatement of the entity's financial statements will not be prevented or detected and corrected on a timely basis. A *significant deficiency* is a deficiency, or a combination of deficiencies, in internal control that is less severe than a material weakness, yet important enough to merit attention by those charged with governance.

Our consideration of internal control was for the limited purpose described in the first paragraph of this section and was not designed to identify all deficiencies in internal control that might be material weaknesses or, significant deficiencies. Given these limitations, during our audit we did not identify any deficiencies in internal control that we consider to be material weaknesses. However, material weaknesses or significant deficiencies may exist that were not identified.

**Compliance and Other Matters**

As part of obtaining reasonable assurance about whether the School's financial statements are free from material misstatement, we performed tests of its compliance with certain provisions of laws, regulations, contracts, and grant agreements, noncompliance with which could have a direct and material effect on the determination of financial statement amounts. However, providing an opinion on compliance with those provisions was not an objective of our audit, and accordingly, we do not express such an opinion. The results of our tests disclosed no instances of noncompliance or other matters that are required to be reported under *Government Auditing Standards*.

---

INDEPENDENT AUDITOR'S REPORT ON INTERNAL CONTROL OVER FINANCIAL REPORTING AND  
ON COMPLIANCE AND OTHER MATTERS BASED ON AN AUDIT OF FINANCIAL STATEMENTS  
PERFORMED IN ACCORDANCE WITH *GOVERNMENT AUDITING STANDARDS*

**Purpose of this Report**

The purpose of this report is solely to describe the scope of our testing of internal control and compliance and the results of that testing, and not to provide an opinion on the effectiveness of the entity's internal control or on compliance. This report is an integral part of an audit performed in accordance with *Government Auditing Standards* in considering the entity's internal control and compliance. Accordingly, this communication is not suitable for any other purpose.

Brynjulfson CPA, P.A.

Brynjulfson CPA, P.A.  
Auburndale, Florida  
November 29, 2023

MANAGEMENT LETTER

To the Board of Trustees  
**Polk State College Collegiate High School**

***Report on the Financial Statements***

We have audited the financial statements of Polk State College Collegiate High School, (the "School"), a charter school and division of Polk State College, as of and for the fiscal year ended June 30, 2023, and have issued our report thereon dated November 29, 2023.

***Auditor's Responsibility***

We conducted our audit in accordance with auditing standards generally accepted in the United States of America; the standards applicable to financial audits contained in *Government Auditing Standards*, issued by the *Comptroller General of the United States* and Chapter 10.850, Rules of the Auditor General.

***Other Reporting Requirements***

We have issued our Independent Auditor's Report on Internal Control over Financial Reporting and Compliance and Other Matters Based on an Audit of the Financial Statements Performed in Accordance with *Government Auditing Standards*. Disclosures in this report, which is dated November 29, 2023, should be considered in conjunction with this management letter.

***Prior Audit Findings***

Section 10.854(1)(e)1., Rules of the Auditor General, requires that we determine whether or not corrective actions have been taken to address findings and recommendations made in the preceding annual financial audit report. There was one finding in the prior year (finding 2022-01) that was not reported in the second preceding year but was also not corrected and can be found contained in this management letter as repeat finding 2022-01.

***Financial Condition and Management***

Sections 10.854(1)(e)2 and 10.855(11), Rules of the Auditor General, require us to apply appropriate procedures and communicate whether or not the School has met one or more of the conditions described in Section 218.503(1), Florida Statutes, and identification of the specific condition(s) met. In connection with our audit of the financial statements of the School, we determined that the School did not meet any of the specified conditions of a financial emergency described in Section 218.503(1), Florida Statutes.

Pursuant to Sections 10.854(1)(e)6.a. and 10.855(12), Rules of the Auditor General, we applied financial condition assessment procedures for the School. It is management's responsibility to monitor the School's financial condition, and our financial condition assessment was based in part on representations made by management and the review of financial information provided by same.

Section 10.854(1)(e)3., Rules of the Auditor General, requires that we communicate any recommendations to improve financial management. In connection with our audit, we did not have any such recommendations.

---

MANAGEMENT LETTER  
(cont...)

**Transparency**

Sections 10.854(1)(e)7 and 10.855(13), Rules of the Auditor General, require that we report the results of our determination as to whether the School maintains on its Web site the information specified in Section 1002.33(9)(p), Florida Statutes. In connection with our audit, we determined that the School maintained on its Web site the information specified in Section 1002.33(9)(p), Florida Statutes.

**Additional Matters**

Section 10.854(1)(e)4., Rules of the Auditor General, requires us to communicate noncompliance with provisions of contracts or grant agreements, or abuse, that have occurred, or are likely to have occurred, that have an effect on the financial statements that is less than material, but which warrants the attention of those charged with governance. In connection with our audit we have the following finding and recommendation:

**Repeat Finding 2022-01: Charter Contract Compliance:**

During our audit we noted certain noncompliance with the provisions in the District charter contract as follows:

- The charter contract requires the School's annual audit to be completed no later than September 30 following the close of the fiscal year. The School's annual audit for the fiscal year ended June 30, 2023 was completed on November 29, 2023 which was after the charter deadline and was caused by a delay in preparing and accumulating supporting documentation to be audited. We recommend management begin audit preparation early enough after the end of the fiscal year to allow for accumulation of all supporting documentation in a timely manner.

**Polk State College Collegiate High School's Response to Recommendations** – Polk State College High School's response to the above finding and recommendation are described in the accompanying letter of management's response and was not subjected to the auditing procedures applied in the audit of the financial statements and, accordingly, we express no opinion on the responses.

**Official Title**

Section 10.854(1)(e)5, Rules of the Auditor General, requires the name or official title of the entity and the school code assigned by the Florida Department of Education be disclosed in this management letter. The official title of the entity is Polk State College Collegiate High School of District 53 Polk, School 8131.

**Purpose of this Letter**

Our management letter is intended solely for the information and use of the Legislative Auditing Committee, members of the Florida Senate and the Florida House of Representatives, the Florida Auditor General, Federal and other granting agencies, the Board of Trustees, the School District of Polk County, Florida and applicable management and is not intended to be and should not be used by anyone other than these specified parties.

*Brynjulfson CPA, P.A.*

Brynjulfson CPA, P.A.  
Auburndale, Florida  
November 29, 2023

Polk State College Collegiate High School  
Letter of Management's Response to Noncompliance Concerns  
2022-23 Financial Audit

**2022-01: Charter Contract Compliance:**

During our audit we noted certain noncompliance with the provisions in the District charter contract and the applicable Florida Statutes as follows:

- The charter contract requires the School's annual audit to be completed no later than September 30 following the close of the fiscal year. The School's annual audit for the fiscal year ended June 30, 2023 was completed on November 29, 2023 which was after the charter deadline and was caused by a delay in preparing and accumulating supporting documentation to be audited. We recommend management begin audit preparation early enough after the end of the fiscal year to allow for accumulation of all supporting documentation in a timely manner.

***Polk State College Collegiate High School's Response to Recommendation:***

Management will develop processes to ensure the accounting records are completed in a timely manner so that the Polk County School District audit completion deadline of September 30 is met. These processes include:

- Monthly meetings between accounting personnel and the High School Principal and staff to review monthly accounting records for completeness.
- Development of procedures to ensure accurate and complete record keeping throughout the year that will facilitate a quicker year end close.
- Ensure staffing is adequate to meet the accounting needs of the High School.