

Comprehensive Annual Financial Report

September 30, 2019



City of Fruitland Park, Florida



This Page Intentionally Left Blank

COMPREHENSIVE
ANNUAL FINANCIAL REPORT

CITY OF FRUITLAND PARK, FLORIDA

FOR THE FISCAL YEAR ENDED
SEPTEMBER 30, 2019

PREPARED BY:
FINANCE DEPARTMENT



This Page Intentionally Left Blank

Introductory Section

	<u>Page</u>
I. Introductory Section:	
Table of Contents	i-ii
Letter of Transmittal	iii-viii
List of Principal Officials	ix
Organization Chart	x-xi
II. Financial Section:	
Independent Auditor's Report	1-2
Management's Discussion and Analysis	3-10
Basic Financial Statements:	
Government-Wide Financial Statements:	
Statement of Net Position	11
Statement of Activities	12
Fund Financial Statements:	
Balance Sheet - Governmental Funds	13
Reconciliation of the Governmental Funds Balance Sheet to the Statement of Net Position	14
Statement of Revenues, Expenditures and Changes in Fund Balances - Governmental Funds	15
Reconciliation of the Statement of Revenues, Expenditures and Changes in Fund Balances of Governmental Funds to the Statement of Activities	16
Statement of Revenues, Expenditures and Changes in Fund Balance - Budget and Actual - General Fund	17
Statement of Revenues, Expenditures and Changes in Fund Balance -Budget and Actual - Community Redevelopment Special Revenue Fund	18
Statement of Net Position - Proprietary Funds	19-20
Statement of Revenues, Expenses and Changes in Fund Net Position - Proprietary Funds	21
Statement of Cash Flows - Proprietary Funds	22-23
Statement of Fiduciary Net Position-Fiduciary Funds	24
Statement of Changes in Fiduciary Net Position – Fiduciary Funds	25
Notes to Financial Statements	26-51
Required Supplementary Information	
Schedule of the City's Proportionate Share of Net Pension Liability	52
Schedule of the City's Contributions	53

	<u>Page</u>
II. Financial Section - Continued:	
Individual Fund Schedules:	
Major Governmental Funds:	
Schedule of Revenues, Expenditures and Changes in Fund Balances	
Budget and Actual- Capital Projects Fund	54
III. Statistical Section:	
Financial Trends	
Net Position by Component	55-56
Changes in Net Position	57-60
Fund Balances of Governmental Funds	61-62
Changes in Fund Balances of Governmental Funds	63-64
Governmental Activities Tax Revenues by Source	65
Revenue Capacity	
Assessed Value and Estimated Actual Value of Taxable Property	66
Property Tax Rates, Direct and Overlapping Governments	67
Principal Property Taxpayers	68
Property Tax Levies and Collections	69
Debt Capacity	
Legal Debt Margin	70
Direct and Overlapping Governmental Activities Debt	70
Ratio of Outstanding Debt by Type	71
Pledged-Revenue Coverage	72-73
Demographic and Economic Information	
Demographic and Economic Statistics	74-75
Principal Employers	76
Operating Information	
Budgeted Full-time Equivalent City Government Employees by Function	77
Operating Indicators by Function	78
Capital Asset Statistics by Function	79
III. Other Reports:	
Independent Auditor's Report on Internal Control over Financial Reporting and on Compliance and Other Matters Based on an Audit of Financial Statements Performed In Accordance With <i>Government Auditing Standards</i>	80-81
Management Letter	82-84
Independent Accountant's Report on Compliance with the Requirements of Section 218.415, Florida Statutes	85
Management's Responses	86



506 W. Berckman Street
Fruitland Park, Florida 34731

Tel. (352) 360-6727
Fax. (352) 360-6686

March 31, 2020

To the Honorable Mayor, Members of the City Commission, and Citizens of the City of Fruitland Park, Florida:

The Comprehensive Annual Financial Report (CAFR) for the City of Fruitland Park, Florida, for the fiscal year ended September 30, 2019 is hereby submitted pursuant to Florida Statutes Chapter 218.39 and Chapter 10.550 of the Rules of the Auditor General of the State of Florida. State law requires an annual financial audit of local government entities be completed no later than nine months after the end of the fiscal year. This CAFR is published to fulfill this requirement for the fiscal year ended September 30, 2019 and to provide our citizens, city commission, city staff, creditors and other interested parties with detailed information concerning the financial condition and activities of the City.

Management assumes full responsibility for the completeness and reliability of the information contained in this report, which is based on a comprehensive framework of internal controls established for this purpose. Because the cost of the internal control should not exceed anticipated benefits, the objective is to provide reasonable, rather than absolute, assurance that the financial statements are free of any material misstatements.

We believe that the City's internal accounting controls adequately

safeguard assets and provide reasonable assurance of proper recording of financial transactions. In addition, we believe the information contained in this report is presented in a manner designed to fairly set forth the financial position and results of operation of the City as measured by the financial activity of its various funds; and that all disclosures necessary to enable the reader to gain a maximum understanding of the City's financial affairs are included.

The City of Fruitland Park maintains budgetary controls to ensure compliance with legal provisions contained in the annual appropriated budget approved by the City Commission. Annual budgets are legally adopted for the activities of the General Fund, Redevelopment Fund, Capital Projects Fund, Utility Fund, Firefighter Pension Trust Fund and the Recreation Programs Fund. Budgets are controlled at the department level and total expenditures may not legally exceed appropriations for each budgeted department without Commission approval. Encumbrance accounting is utilized to reserve the encumbered portion of the appropriation.

The City of Fruitland Park's financial statements have been audited in accordance with generally accepted auditing standards by McDermitt Davis, Certified Public Accountants and Advisors. The goal of the independent audit is to provide reasonable assurance that the financial statements of the City of Fruitland Park are free of material misstatement. The independent audit involves examining, on a test basis,



506 W. Berckman Street
Fruitland Park, Florida 34731

Tel. (352) 360-6727
Fax. (352) 360-6686

evidence supporting the amounts and disclosures in the financial statements; assessing the accounting principles used and estimates made by management; and evaluating the overall financial statement presentation. McDirmit Davis concluded, based upon the audit, that there is reasonable basis for rendering an unmodified (“clean report”) opinion that the City of Fruitland Park’s financial statements for the fiscal year ending September 30, 2019, are fairly presented in conformity with generally accepted accounting principles (GAAP). The independent auditor’s report is located at the front of the financial section of this report.

Management’s Discussion and Analysis (MD&A), immediately follows the independent auditor’s report and provides a narrative introduction, overview, and analysis of the basic financial statements. The MD&A provides “financial highlights” and interprets the financial report by analyzing trends and by explaining changes, fluctuations, and variances in the financial data. This letter of transmittal is designed to complement the MD&A and should be read in conjunction with it.

Profile of the City

The City of Fruitland Park is operated under a Commission-Manager form of government. Policymaking and legislative authorities are vested in the City Commission that consists of a Mayor and four other Commission members. The Mayor presides over commission meetings and public ceremonies. The Commission is non-partisan and the

members are elected to four year staggered terms. The City Commission is responsible, among other things, for passing ordinances, adopting the budget, appointing boards, and hiring the City Manager, City Finance Director, City Clerk, City Attorney and the City Auditor. The City Manager is responsible for carrying out the policies of the Commission, overseeing the day-to-day operations and appointing department heads.

The City of Fruitland Park, incorporated in 1927, is located in central Florida. It is empowered by Florida Statute to extend its corporate limits by annexation, which it does from time to time. Fruitland Park has a population of 10,094 and a land area of approximately 7.31 square miles. It has 73.73 miles of street. The Villages added an additional 17.008 miles of streets. The City’s property tax millage rate is \$3.9134 per \$1000 for fiscal year 2019, which is the Roll Back Rate (RBR).

The City of Fruitland Park provides a full range of services to its residents. These services include a public library, police and fire protection, the construction and maintenance of local streets and infrastructure, and recreational and cultural activities and events. The City also maintains and operates water and sewer utilities. Garbage collection and disposal services are provided by way of an exclusive franchise agreement with Waste Management Inc.

The annual budget serves as the foundation for the City of Fruitland Park’s financial planning and control. All



department heads are required to submit requests for appropriation to the City Manager. The City Manager uses these requests as a basis for developing a proposed budget and then presents the proposed budget to the City Commission for review. The City Commission is required to hold two public hearings, one on the proposed budget and a second to adopt a final budget by no later than September 30th, the close of the fiscal year. The City Manager and Department Heads may transfer resources within a department as necessary; however transfers between departments require special approval (budget amendment by resolution) from the City Commission. The City of Fruitland Park utilizes an encumbrance accounting system to maintain budgetary control. These encumbrances lapse at year-end.

Local economy

Fruitland Park, which is located in northwest Lake County, is essentially residential in character and its economy is primarily centered in retail trade and service industries. Fruitland Park is located in the triangle between Leesburg, Lady Lake and The Villages, the largest residential retirement community in the state.

Evidence of growth has begun to show all over the City of Fruitland Park. One of the most visible signs of this event is taking place on the north western boundaries of the City. In 2008, approximately 989 acres of property was annexed into the City of Fruitland Park. This development is referred to as the "Pine Ridge Dairy". In May 2014, 780 of those acres were

purchased by The Villages and approved for development as the "Villages of Fruitland Park". The approved plan includes 2,055 residential homes, 3 recreation centers, and an 18-hole golf course. The residential home values range from \$225,000 to over \$2,000,000. There were 348 certificates of occupancy issued in the Villages of Fruitland Park in FY2015, 689 issued in FY2016, 894 issued in FY2017, 90 issued in FY2018, and 31 issued in FY2019 for a total of 2,052 certificates of occupancy issued in the Villages of Pine Ridge Dairy. There was a total of 102 certificates of occupancy issued in Fruitland Park in FY2019.

The Villages is known for causing an economic domino effect to all of its surrounding areas. The City of Fruitland Park should experience a growth pattern similar to Lady Lake over the next 1-4 years. Several other parcels in Fruitland Park are making plans because of the growth brought by The Villages to develop commercial infrastructures such as warehouses, retail shops, apartments, family housing, and restaurants. We have several subdivisions being built: Oak Forest, Chelsea's Run, Mirror Lake Village, and Village Park (First Baptist Church). The Glen is completing its final phase. Future developments are Gardenia East and Lake Saunder's Grove.

Lake County made a three phase expansion design for the City's second major thorough fare, County Road 466A, from two to four lanes in 2012. However, due to budget constraints the project was



506 W. Berckman Street
Fruitland Park, Florida 34731

Tel. (352) 360-6727
Fax. (352) 360-6686

placed on hold. The County has now teamed up with the City of Fruitland Park and the Villages to get this roadway completed. Lake County completed construction on Phase 1 (from US Highway 27/441 to Sunny Court) in April 2017. The estimated cost of Phase 1 is \$2.3 million plus \$374,094 to relocate the utilities. The Villages handled all of the road construction in Phase 2 (from Windy Acres to the Sumter County Line) in 2016, with an estimated cost of \$5.32 million. The City of Fruitland Park along with Lake County solicited help of the State of Florida for Phase 3. Phase 3a, at 3.3 million (from Sunny Court to Janice Drive) and Phase 3b at 7.0 million (from Janice Drive to Windy Acres). The County is receiving 2.5 million in state funding to complete the project. The county worked on Phase 3a in FY2019 and completed construction in December 2019. There is a total of 3.05 miles of roadway that will be widened once the project is complete.

The Florida Department of Transportation began its construction on U.S. Highway 27/441 in Fruitland Park in 2011. This project expanded the City's main corridor from four to six lanes and was completed in June 2014. This expansion will also facilitate the expected growth.

There were 416 business licenses issued in Fruitland Park as of September 30, 2019. There are several new businesses in Fruitland Park: Village Institute of Plastic Surgery (VIP), Lake Sumter Home Watch, Brown's Early Learning Academy, Fivestar Medical Supplies, Chavez Landscaping, RV Specialist, and Here for You Home Services. As previously

stated, the City of Fruitland Park expects the number of commercial businesses to grow because the area will be more attractive for several industries around the country.

Businesses looking to build or relocate in Lake County can take advantage of various incentives. Lake County's Department of Economic Growth and Redevelopment sponsors several Business Incentive programs.

Lake County's Business Opportunity Centers (BOC) offer full-service business support to all businesses in Lake County, regardless of size, industry or business cycle. Whether you are an entrepreneur with the next big idea or a successful business owner looking to take your company to the next level, the Lake County BOC has a program or service designed to help you achieve your economic goals.

High Value Job Creation Program (HVJCP) is a new program designed to encourage and target industry businesses that offer significant economic benefit and create high-value jobs. This program provides a cash award for the creation of jobs that pay a minimum of 115% of the County's average annual wage.

The Artist Relocation Program (ARP) is designed to encourage arts and culture in downtown art districts by providing matching funds to new or relocating art businesses to offset building improvement costs.



506 W. Berkman Street
Fruitland Park, Florida 34731

Tel. (352) 360-6727
Fax. (352) 360-6686

Lake County along with Lake-Sumter State College, the Sumter County Economic Development Council, and other local economic development-oriented agencies established the Business Assistance Center; a partnership to help new and nurture existing businesses. This partnership provides small-business mentoring and is a resource when small businesses hit the inevitable bump or hurdle.

Affordable land and a pro-business approach contributes to the areas overall success in attracting new business. Large distributors such as Marriott, Domino's Pizza, Toyota and Goodyear Tire and Rubber Company have located in Lake County because of the central location, which allows for easy and efficient distribution throughout the state.

Lake County's September 2019 unemployment rate was 2.8%. This is down .1% for the same time period last year. This rate is slightly lower than the state average of 3.0% and lower than the national average of 3.5% for the same period.

The taxable values for real and personal property has decreased 28.7% from 2008 to 2013, when property values were at its peak. Amendment 1 was approved in 2008 which limited growth in taxable values. Taxable values \$680,084,533 rose 38.33% from FY2018 (\$491,629,188) due to growth in the Villages. FY2018 taxable value finally caught up to the property values of 2008, although that was due to the Village growth.

Major Initiatives

The City of Fruitland Park is taking a proactive stance to promote the economic development in the area. The Commission is revitalizing the City for residents of all ages to enjoy. There were several properties acquired that will be used for recreational purposes in the future. The old Library began renovations to become the new Community Center. Additionally, Community Redevelopment Agency funds were utilized to relocate utilities on 466a to widen it from 2 lanes to 4 lanes, with one phase left to complete. We continue to renovate parks and upgrade basketball facilities. The City repaved eight streets (Ridge Drive, Judith Ave, Le Conte St, Plumosa Ave, Fountain St, Dennis Ave, Smith St, Nuzum St and the entrance to the soccer field and Shiloh).

The City built a new soccer field and added electricity and lighting to the field in FY2019. We spent \$356,789 and were reimbursed \$150,000 by Lake County. The City constructed a new library. The construction cost was \$2,842,954 but we received grants from the state and the county for \$1,919,003 which means the Library cost Fruitland Park \$923,951. The final cost which includes furnishing was \$3,134,732. The new Library opened July 2019. The City made the final payment on the new air packs and refill system for the fire department and spent \$245,985 on the new Library, with Sales Surtax funds in FY2019, and also leased 6 PD vehicles and paid a loan borrowed for construction of the Lady Lake sewer connection. The Lady Lake



sewer connection became operational in October 2018.

Long Term Financial Planning

Lake County voters renewed a One-Cent Discretionary Infrastructure Surtax on November 6, 2002 and again on November 3, 2015. The original tax, was authorized through December 31, 2017 and is now authorized through December 31, 2032, this provides a funding source for infrastructure and capital projects. These funds were used to construct City Hall. The City used these funds on several major Capital Improvement Projects which included the construction of two major sewer lines along 466a and Shiloh plus a new sewer line connection to Lady Lake.

At September 30, 2019 the unassigned fund balance in the General Fund was \$2,558,442, 4 months of current General Fund expenditures. This figure is over the “no less than two months of regular general fund operating expenditures” provided for in the Government Finance Officers Association’s Appropriate Level of Unreserved Fund Balance recommendation. Also, it is over than the minimum range of the 3 months of operating expenditures informally established by the City for budgetary and planning purposes.

Awards

The Government Finance Officers Association of the United States and Canada (GFOA) awarded a Certificate of Achievement for Excellence in Financial Reporting to the City of Fruitland Park for its Comprehensive Annual Financial

Report (CAFR) for the fiscal year ending September 30, 2018. The City of Fruitland Park had received this prestigious award for fourteen consecutive years. In order to be awarded a Certificate of Achievement, a government must publish an easily readable and efficiently organized comprehensive annual financial report. This report must satisfy both generally accepted accounting principles and applicable legal requirements. A Certificate of Achievement is valid for a period of one year only.

This report represents numerous hours of preparation and it would not have been possible without the dedicated efforts of the finance department staff. We would like to express our appreciation to staff members who assisted and contributed to the preparation of this report. Special recognition is given to finance department employees who worked diligently to ensure the timeliness and accuracy of this report. We also thank the Mayor and Commission Members for their interest and support in planning and conducting the operations of the City in a responsible and professional manner.

Respectfully Submitted,

Gary La Venia

Gary La Venia, City Manager

Jeannine Racine

Jeannine Racine, City Finance Director

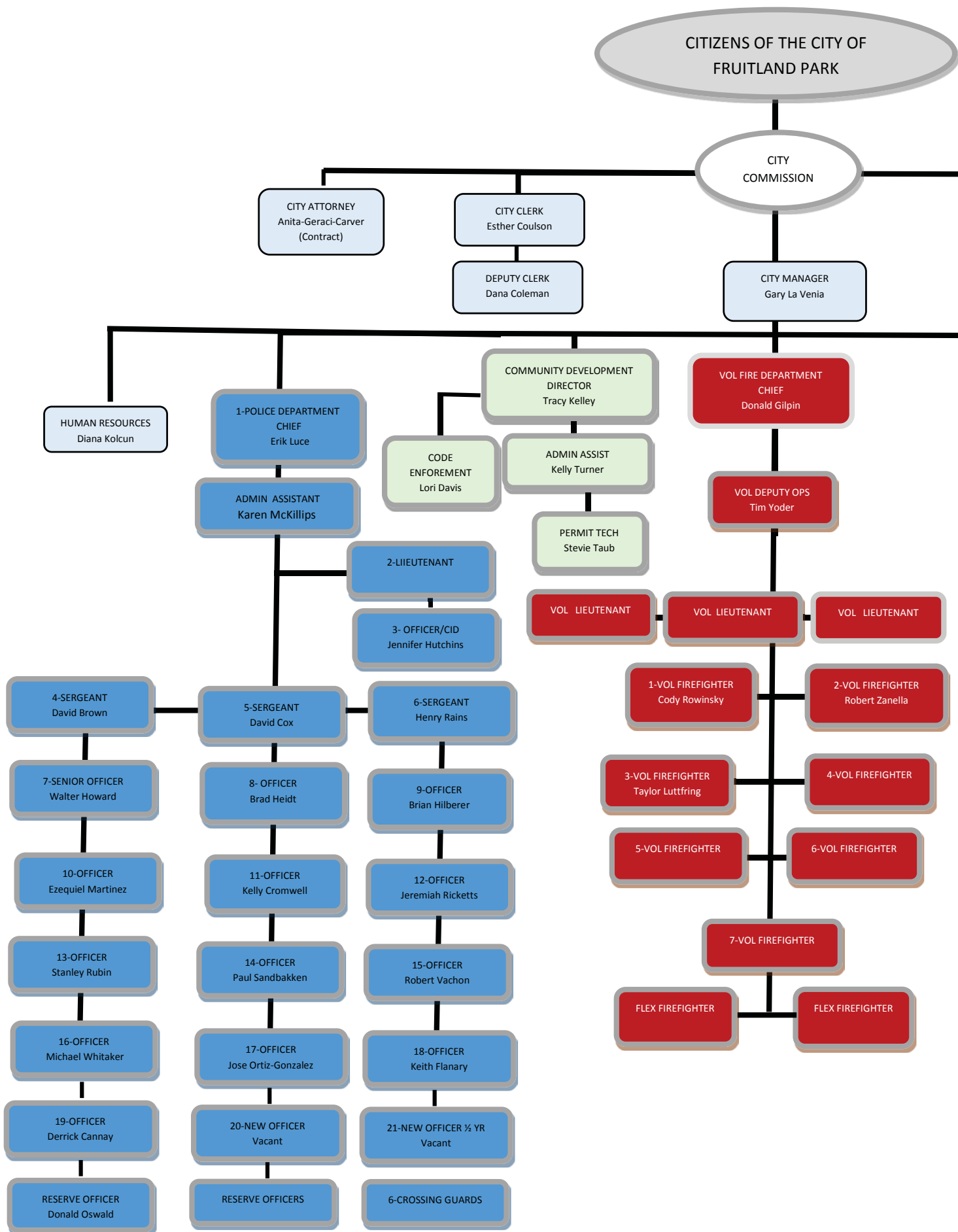


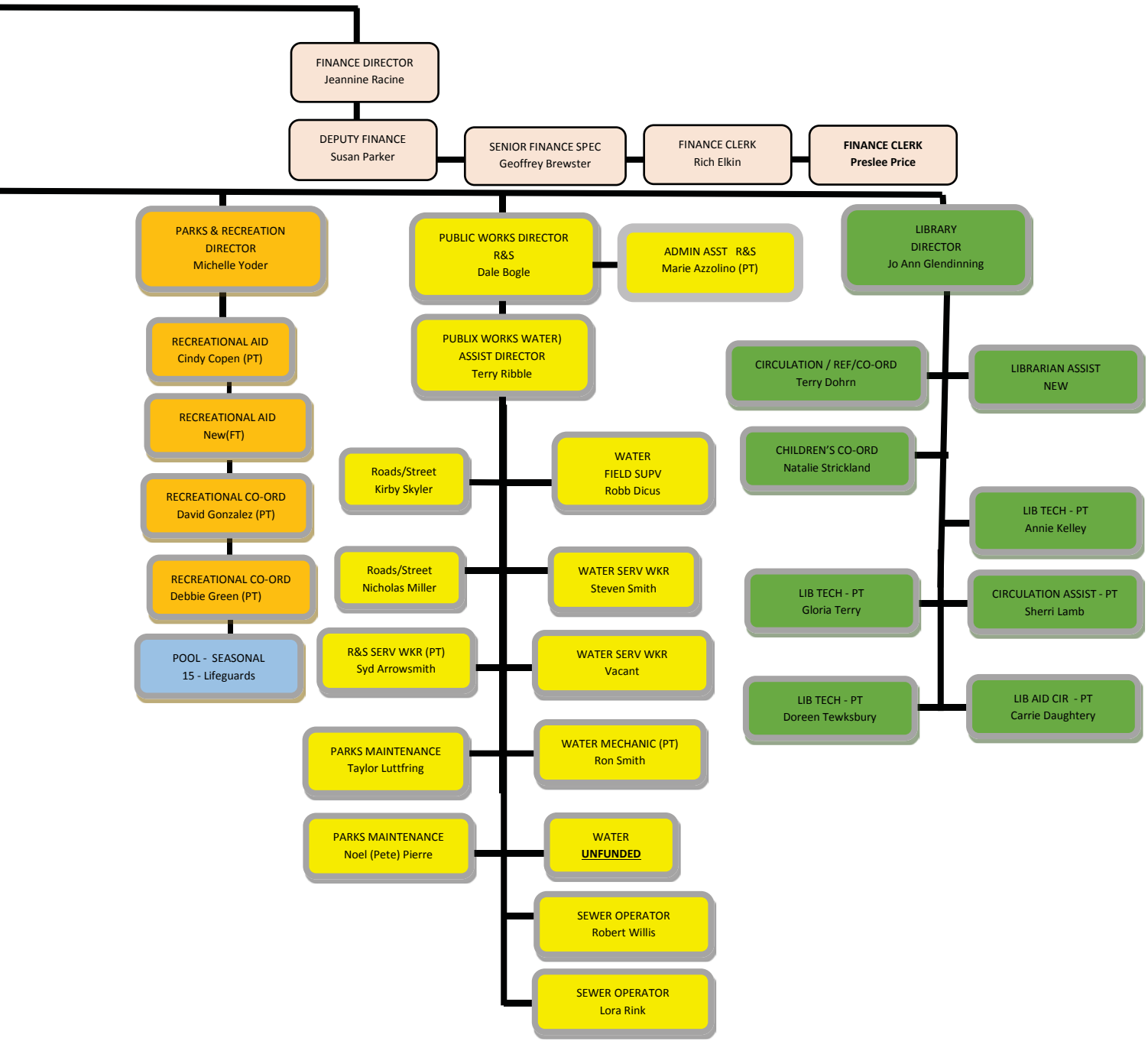
This Page Intentionally Left Blank

CITY COMMISSION AND OFFICIALS

September 30, 2019

Mayor	Christopher "Chris" Cheshire
Vice Mayor-Commissioner.....	John Gunter
Commissioner.....	Christopher "Chris" Bell
Commissioner.....	John Mobilian
Commissioner.....	Patrick DeGrave
City Manager.....	Gary La Venia
City Finance Director.....	Jeannine Racine
City Clerk.....	Esther Lewin-Coulson
Police Chief.....	Erik Luce
Community Development Director.....	Tracy Kelley
Public Works Director.....	Allen "Dale" Bogle
Library Director.....	Jo-Ann D. Glendinning
Recreation Director.....	C. Michelle Yoder
City Attorney.....	Anita Geraci-Carver







This Page Intentionally Left Blank

Financial Section

INDEPENDENT AUDITOR'S REPORT

Honorable Mayor and City Commission
City of Fruitland Park, Florida

Report on the Financial Statements

We have audited the accompanying financial statements of the governmental activities, the business-type activities, each major fund, and the aggregate remaining fund information of the *City of Fruitland Park, Florida*, as of and for the year ended September 30, 2019, and the related notes to the financial statements, which collectively comprise the City's basic financial statements as listed in the table of contents.

Management's Responsibility for the Financial Statements

Management is responsible for the preparation and fair presentation of these financial statements in accordance with accounting principles generally accepted in the United States of America; this includes the design, implementation, and maintenance of internal control relevant to the preparation and fair presentation of financial statements that are free from material misstatement, whether due to fraud or error.

Auditor's Responsibility

Our responsibility is to express opinions on these financial statements based on our audit. We conducted our audit in accordance with auditing standards generally accepted in the United States of America and the standards applicable to financial audits contained in *Government Auditing Standards*, issued by the Comptroller General of the United States. Those standards require that we plan and perform the audit to obtain reasonable assurance about whether the financial statements are free from material misstatement.

An audit involves performing procedures to obtain audit evidence about the amounts and disclosures in the financial statements. The procedures selected depend on the auditor's judgment, including the assessment of the risks of material misstatement of the financial statements, whether due to fraud or error. In making those risk assessments, the auditor considers internal control relevant to the entity's preparation and fair presentation of the financial statements in order to design audit procedures that are appropriate in the circumstances, but not for the purpose of expressing an opinion on the effectiveness of the entity's internal control. Accordingly, we express no such opinion. An audit also includes evaluating the appropriateness of accounting principles used and the reasonableness of significant accounting estimates made by management, as well as evaluating the overall presentation of the financial statements.

We believe that the audit evidence we have obtained is sufficient and appropriate to provide a basis for our (1) unmodified opinion on the business-type activities, each major fund, and the aggregate remaining fund information and (2) qualified opinion on the governmental activities.

Basis for Qualified Opinion on Governmental Activities

Management has not adopted a methodology for properly implementing the requirements of Government Accounting Standards Board (GASB) Statement No. 68, *Accounting and Financial Reporting for Pensions*, and, accordingly, has not provided information relating to net pension assets, deferred inflows of pension earnings and deferred outflows of pension earnings as they relate to the Municipal Firemen's Retirement Plan. The amount by which this departure would affect the assets, deferred inflows, deferred outflows and change in net position of the governmental activities has not been determined.

Qualified Opinion on Governmental Activities

In our opinion, except for the effects of the matter described in the Basis for Qualified Opinion paragraph on the governmental activities, the financial statements referred to above present fairly, in all material respects, the respective financial position of the governmental activities of City of Fruitland Park, as of September 30, 2019, and the respective changes in financial position for the year then ended in accordance with accounting principles generally accepted in the United States of America.

Unmodified Opinion on the Business-Type Activities, Major Funds, and Aggregate Remaining Fund Information

In our opinion, the financial statements referred to above present fairly, in all material respects, the respective financial position of the business-type activities, each major fund, and the aggregate remaining fund information of City of Fruitland Park, as of September 30, 2019, and the respective changes in financial position and, where applicable, cash flows thereof and the respective budgetary comparison for the general fund, and community redevelopment fund for the year then ended in accordance with accounting principles generally accepted in the United States of America.

Other Matters

Required Supplementary Information

Accounting principles generally accepted in the United States of America require that the Management's Discussion and Analysis and the pension disclosures on pages 3 through 10, and 52 through 53 be presented to supplement the basic financial statements. Such information, although not a part of the basic financial statements, is required by the Governmental Accounting Standards Board who considers it to be an essential part of financial reporting for placing the basic financial statements in an appropriate operational, economic, or historical context. We have applied certain limited procedures to the required supplementary information in accordance with auditing standards generally accepted in the United States of America, which consisted of inquiries of management about the methods of preparing the information and comparing the information for consistency with management's responses to our inquiries, the basic financial statements, and other knowledge we obtained during our audit of the basic financial statements. We do not express an opinion or provide any assurance on the information because the limited procedures do not provide us with sufficient evidence to express an opinion or provide any assurance.

Management has omitted the Schedule of Changes in the City's Net Pension Liability and Related Ratios - Municipal Firemen's Retirement Plan, the Schedule of City Contributions - Municipal Firemen's Retirement Plan, and the Schedule of Investment Returns - Municipal Firemen's Retirement Plan that accounting principles generally accepted in the United States of America require to be presented to supplement the basic financial statements. Such missing information, although not a part of the basic financial statements, is required by the Governmental Accounting Standards Board who considers it to be an essential part of financial reporting for placing the basic financial statements in an appropriate operational, economic, or historical context. Our opinion on the basic financial statements is not affected by this missing information.

Other Information

Our audit was conducted for the purpose of forming opinions on the financial statements that collectively comprise *City of Fruitland Park's* basic financial statements. The introductory section and individual fund financial schedules are presented for purposes of additional analysis and are not a required part of the financial statements.

The individual fund financial schedules are the responsibility of management and were derived from and relates directly to the underlying accounting and other records used to prepare the basic financial statements. Such information has been subjected to the auditing procedures applied in the audit of the basic financial statements and certain additional procedures, including comparing and reconciling such information directly to the underlying accounting and other records used to prepare the basic financial statements or to the basic financial statements themselves, and other additional procedures in accordance with auditing standards generally accepted in the United States of America. In our opinion, the information is fairly stated, in all material respects, in relation to the basic financial statements as a whole.

The introductory section and statistical section have not been subjected to the auditing procedures applied in the audit of the basic financial statements and, accordingly, we do not express an opinion or provide any assurance on them.

Other Reporting Required by Government Auditing Standards

In accordance with *Government Auditing Standards*, we have also issued a report dated March 20, 2020 on our consideration of *City of Fruitland Park's* internal control over financial reporting and on our tests of its compliance with certain provisions of laws, regulations, contracts, and grant agreements and other matters. The purpose of that report is to describe the scope of our testing of internal control over financial reporting and compliance and the results of that testing, and not to provide an opinion on internal control over financial reporting or on compliance. That report is an integral part of an audit performed in accordance with *Government Auditing Standards* in considering *City of Fruitland Park's* internal control over financial reporting and compliance.

McDiernit Davis

Orlando, Florida
March 20, 2020

As management of the *City of Fruitland Park, Florida* we offer readers of the *City of Fruitland Park's* financial statements this narrative overview and analysis of the financial activities of the *City of Fruitland Park* for the fiscal year ended September 30, 2019. We encourage readers to consider the information presented here in conjunction with additional information that we have furnished in our letter of transmittal.

Financial Highlights

- The assets and deferred outflows of the *City of Fruitland Park* exceeded its liabilities and deferred inflows at the close of the most recent fiscal year by \$19,148,120 (net position). Of this amount, \$876,007 represents unrestricted net position, which may be used to meet the government's ongoing obligations to citizens and creditors.
- The government's total net position increased by \$2,222,196.
- At the close of the current fiscal year, the *City of Fruitland Park's* governmental funds reported combined ending fund balances of \$7,751,965, an increase of \$1,654,996 in comparison with the prior year. Approximately (33%) of this total amount, \$2,558,442, is available for spending at the government's discretion (unassigned fund balance).
- At the end of the current fiscal year, unassigned fund balance for the general fund was \$2,558,442, or (35%) of total general fund expenditures.

Overview of the Financial Statements

The financial statements focus on both the City as a whole (government-wide) and on the major individual funds. Both perspectives (government-wide and major fund) allow the user to address relevant questions, broaden a basis for comparison (year-to-year or government-to-government) and enhance the City's accountability.

This discussion and analysis are intended to serve as an introduction to the *City of Fruitland Park's* (the City) basic financial statements. The City's basic financial statements comprise three components: 1) government-wide financial statements, 2) fund financial statements, and 3) notes to the financial statements. This report also contains other supplementary information in addition to the basic financial statements themselves.

Government-Wide Financial Statements

The government-wide financial statements are designed to provide readers with a broad overview of the *City of Fruitland Park's* financial position, in a manner similar to a private-sector business. They include a *Statement of Net Position* and a *Statement of Activities*.

The *Statement of Net Position* presents information on all of the City's assets, liabilities, and deferred inflows/outflows of resources, with the difference reported as net position. Over time, increases or decreases in net position may serve as a useful indicator of whether the financial position of the City is improving or deteriorating.

The *Statement of Activities* presents information showing how the government's net position changed during the most recent fiscal year. All changes in net position are reported as soon as the underlying event giving rise to the change occurs, regardless of the timing of related cash flows. Thus, revenues and expenses are reported in this statement for some items that will only result in cash flows in future fiscal periods (e.g., uncollected taxes and earned but unused vacation leave).

Both of the government-wide financial statements distinguish functions of the *City of Fruitland Park* that are principally supported by taxes and intergovernmental revenues (*governmental activities*) from other functions that are intended to recover all or a significant portion of their costs through user fees and charges (*business-type activities*). The governmental activities of the *City of Fruitland Park* include general government, public safety, transportation, sanitation and culture and recreation services. The business-type activities of the *City of Fruitland Park* include utility services and recreation programs.

The government-wide financial statements include only the *City of Fruitland Park* itself (known as the *primary government*) and one blended component unit (The Community Redevelopment Fund).

The government-wide financial statements can be found on pages 11 - 12 of this report.

Fund Financial Statements

A *fund* is a grouping of related accounts that is used to maintain control over resources that have been segregated for specific activities or objectives. The *City of Fruitland Park*, like other state and local governments, uses fund accounting to ensure and demonstrate compliance with finance-related legal requirements. All of the funds of the *City of Fruitland Park* can be divided into three categories: governmental funds, proprietary funds and fiduciary funds.

Governmental Funds

Governmental funds are used to account for essentially the same functions reported as governmental activities in the government-wide financial statements. However, unlike the government-wide financial statements, governmental fund financial statements focus on *near-term inflows and outflows of spendable resources*, as well as on *balances of spendable resources* available at the end of the fiscal year. Such information may be useful in evaluating a government's near-term financing requirements.

Because the focus of governmental funds is narrower than that of the government-wide financial statements, it is useful to compare the information presented for *governmental funds* with similar information presented for *governmental activities* in the government-wide financial statements. By doing so, readers may better understand the long-term impact of the government's near-term financing decisions. Both the governmental fund Balance Sheet and the governmental fund Statement of Revenues, Expenditures, and Changes in Fund Balances provide a reconciliation to facilitate this comparison between *governmental funds* and *governmental activities*.

The *City of Fruitland Park* maintains three individual governmental funds. Information is presented separately in the governmental funds Balance Sheet and in the governmental fund Statement of Revenues, Expenditures, and Changes in Fund Balances for the General Fund, the Community Redevelopment Fund, and Capital Projects Fund which are considered to be major funds.

The *City of Fruitland Park* adopts an annual appropriated budget for all of its governmental funds. Budgetary comparison statements have been provided for the General Fund, and the Community Redevelopment Fund to demonstrate compliance with this budget at pages 17 - 18. Budgetary comparison schedule for the Capital Projects fund is at page 54.

The basic governmental fund financial statements can be found on pages 13 - 16 of this report.

Proprietary Funds

City of Fruitland Park maintains one type of proprietary fund. *Enterprise funds* are used to report the same functions presented as *business-type activities* in the government-wide financial statements. The *City of Fruitland Park* uses enterprise funds to account for utility management and recreation programs.

Proprietary funds provide the same type of information as the government-wide financial statements, only in more detail. The proprietary fund financial statements provide separate information for Utility management and Recreation programs.

The basic proprietary fund financial statements can be found on pages 19 - 23 of this report.

Fiduciary Funds

Fiduciary funds are used to account for resources held for the benefit of parties outside the government. Fiduciary funds are *not* reflected in the government-wide financial statement because the resources of those funds are *not* available to support the City's own programs. The accounting used for fiduciary funds is much like that used for proprietary funds. The basic fiduciary fund financial statements can be found on pages 24 -25 of this report.

Notes to the Financial Statements

The notes provide additional information that is essential to a full understanding of the data provided in the government-wide and fund financial statements. The notes to financial statements can be found on pages 26 - 51 of this report.

Required Supplementary Information (RSI)

RSI can be found on pages 52 - 53 of this report.

Government-Wide Financial Analysis

Statement of Net Position

As noted earlier, net position may serve over time as a useful indicator of a government's financial position. In the case of the *City of Fruitland Park*, assets exceeded liabilities by \$19,148,120 at the close of the most recent fiscal year. The following table reflects the condensed statement of net position for the current and prior year. For more detail see the Statement of Net Position on page 11.

City of Fruitland Park Statement of Net Position

	Governmental Activities		Business-Type Activities		Total Primary Government	
	2019	2018	2019	2018	2019	2018
Assets:						
Current and other assets	\$ 8,373,015	\$ 6,914,928	\$ 812,080	\$ 661,346	\$ 9,185,095	\$ 7,576,274
Capital assets	7,645,655	6,421,206	8,564,610	8,907,832	16,210,265	15,329,038
Total assets	16,018,670	13,336,134	9,376,690	9,569,178	25,395,360	22,905,312
Deferred Outflows	2,333,575	1,553,203	125,513	137,866	2,459,088	1,691,069
Liabilities:						
Long term liabilities	4,160,807	2,391,573	3,434,834	3,842,235	7,595,641	6,233,808
Other liabilities	629,270	819,323	239,001	418,683	868,271	1,238,006
Total liabilities	4,790,077	3,210,896	3,673,835	4,260,918	8,463,912	7,471,814
Deferred inflows:	230,043	182,449	12,373	16,194	242,416	198,643
Net Position:						
Net investment in capital assets	7,312,155	6,257,821	5,339,711	5,263,430	12,651,866	11,521,251
Restricted	4,748,371	5,278,878	871,876	648,327	5,620,247	5,927,205
Unrestricted	1,271,599	(40,707)	(395,592)	(481,825)	876,007	(522,532)
Total net position	\$ 13,332,125	\$ 11,495,992	\$ 5,815,995	\$ 5,429,932	\$ 19,148,120	\$ 16,925,924

\$12,651,866 (66%) of the City's net position reflects its investment in capital assets (e.g., land, buildings, improvements, infrastructure and equipment) less any related debt used to acquire those assets that is still outstanding. The City uses these capital assets to provide services to citizens; consequently, these assets are not available for future spending.

Although the *City of Fruitland Park's* investment in its capital assets is reported net of related debt, it should be noted that the resources needed to repay this debt must be provided from other sources, since the capital assets themselves cannot be used to liquidate these liabilities.

Net position that are subject to external restrictions as to how they may be used total \$5,620,247 (29%). The remaining balance of *unrestricted net position* (\$876,007 or 5%) may be used to meet the government's ongoing obligations to citizens and creditors.

The City's net position increased by \$2,222,196 during the current fiscal year. The following table reflects the condensed Statement of Activities for the current year. For more detail see the Statement of Activities on page 12.

City of Fruitland Park, Florida
Management's Discussion and Analysis

City of Fruitland Park
Changes in Net Position

	Governmental Activities		Business-Type Activities		Total Primary Government	
	2019	2018	2019	2018	2019	2018
Revenues:						
Program revenues -						
Charges for services	\$ 2,384,434	\$ 2,037,726	\$ 1,134,776	\$ 984,015	\$ 3,519,210	\$ 3,021,741
Operating grants and contributions	479,557	391,786	-	-	479,557	391,786
Capital grants and contributions	784,284	1,529,237	358,948	587,074	1,143,232	2,116,311
General revenues -						
Property taxes	2,901,496	2,122,172	-	-	2,901,496	2,122,172
Franchise and public service taxes	1,717,339	1,703,962	-	-	1,717,339	1,703,962
Intergovernmental	1,386,780	883,370	-	-	1,386,780	883,370
Investment income and miscellaneous	222,850	221,191	4,508	26,898	227,358	248,089
Total revenues	9,876,740	8,889,444	1,498,232	1,597,987	11,374,972	10,487,431
Expenses:						
General government	1,347,411	1,476,413	-	-	1,347,411	1,476,413
Public safety	4,208,592	3,442,497	-	-	4,208,592	3,442,497
Transportation	408,720	727,956	-	-	408,720	727,956
Sanitation	525,294	504,421	-	-	525,294	504,421
Culture and recreation	942,796	905,359	-	-	942,796	905,359
Interest on long-term debt	16,732	14,958	-	-	16,732	14,958
Utility	-	-	1,671,164	1,116,962	1,671,164	1,116,962
Recreation programs	-	-	32,067	31,919	32,067	31,919
Total expenses	7,449,545	7,071,604	1,703,231	1,148,881	9,152,776	8,220,485
Increase (decrease) in net position before transfers	2,427,195	1,817,840	(204,999)	449,106	2,222,196	2,266,946
Transfers	(591,062)	(136,627)	591,062	136,627	-	-
Increase (decrease) in net position	1,836,133	1,681,213	386,063	585,733	2,222,196	2,266,946
Net position, October 1	11,495,992	9,814,779	5,429,932	4,844,199	16,925,924	14,658,978
Net position, September 30	\$ 13,332,125	\$ 11,495,992	\$ 5,815,995	\$ 5,429,932	\$ 19,148,120	\$ 16,925,924

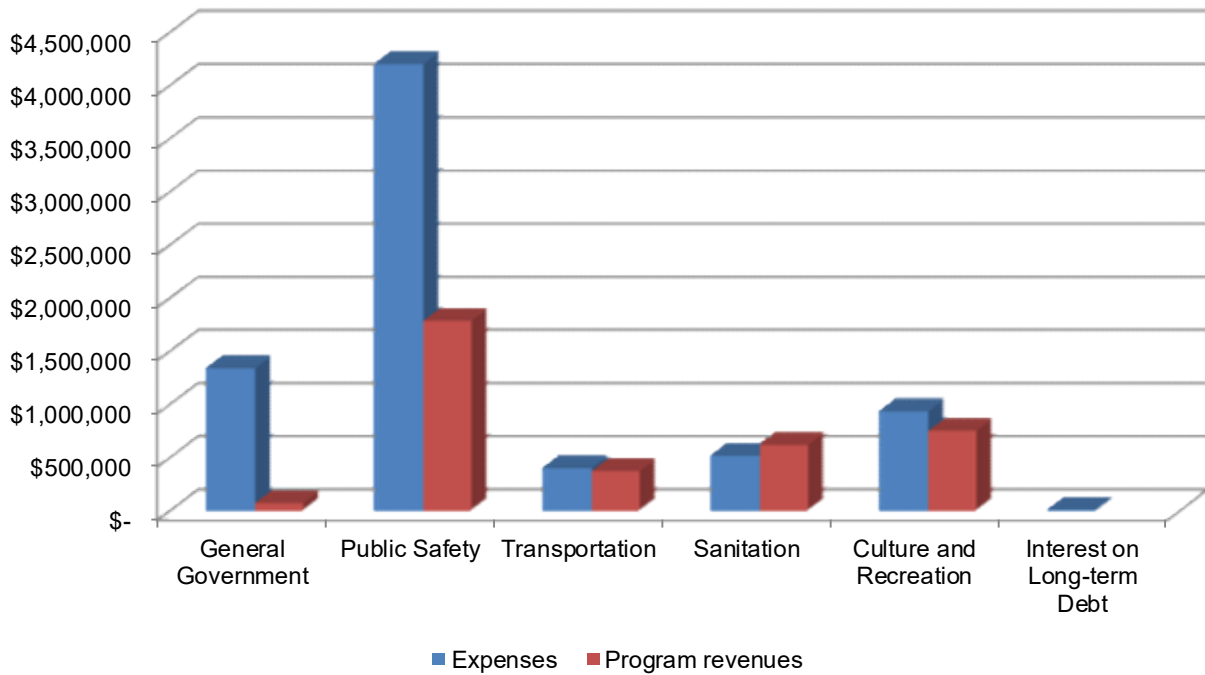
Governmental Activities

Governmental activities increased the *City of Fruitland Park's* net position by \$1,836,133. This was due to increases in property values, franchise fees and taxes, charges for services, and less spending than anticipated.

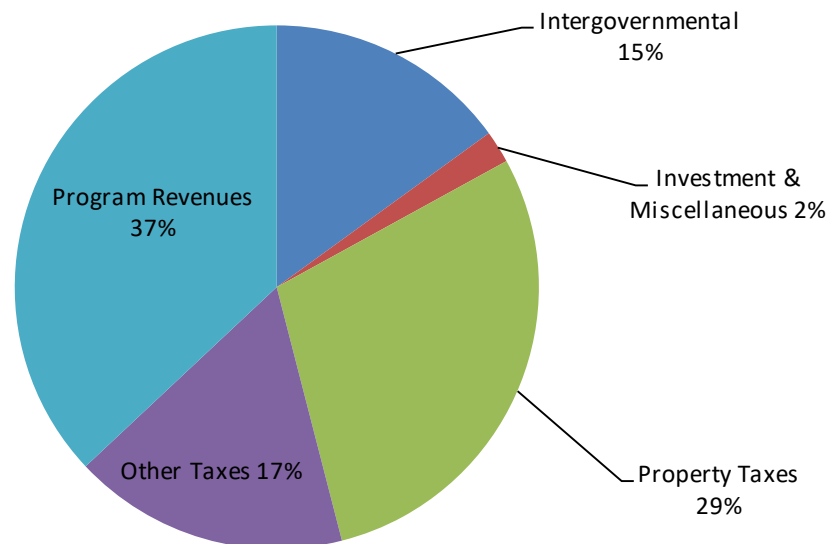
Business-Type Activities

Business-type activities increased the *City of Fruitland Park's* net position by \$386,063 primarily due to increases in charges for services and transfers in.

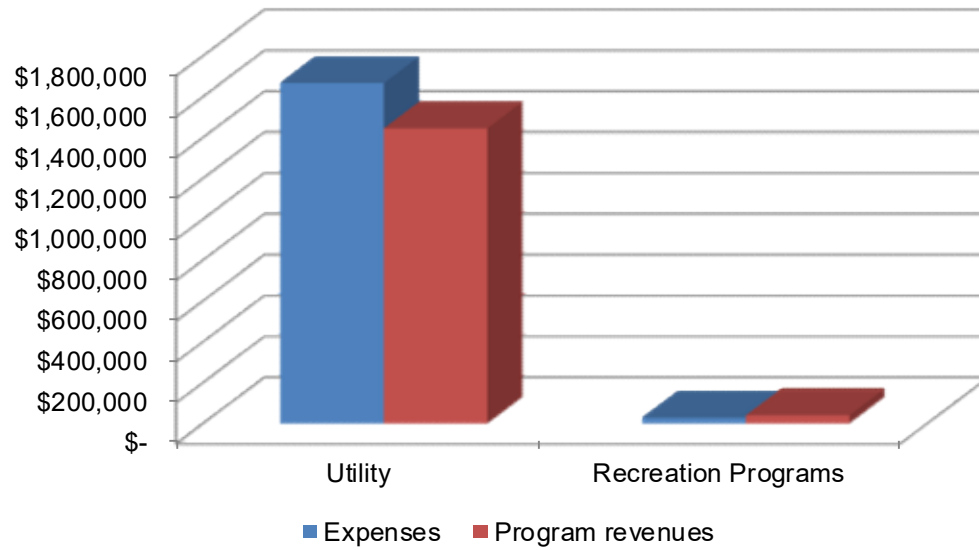
Expenses and Program Revenues - Governmental Activities



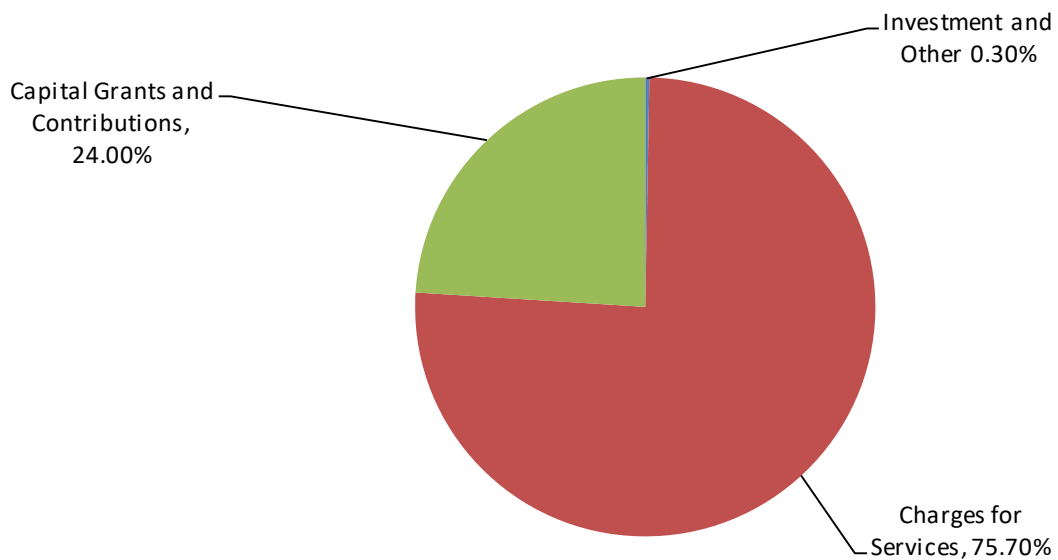
Revenue by Source - Governmental Activities



Expenses and Program Revenues - Business-Type Activities



Revenue by Source - Business-Type Activities



Financial Analysis of the Government's Funds

As noted earlier, the *City of Fruitland Park* used fund accounting to ensure and demonstrate compliance with finance-related requirements.

Governmental Funds

The focus of the City's *governmental funds* is to provide information on near-term inflows, outflows, and balances of *spendable* resources. Such information is useful in assessing the *City of Fruitland Park's* financing requirements. In particular, *unassigned fund balance* may serve as a useful measure of a government's net resources available for spending at the end of the fiscal year.

As of the end of the current fiscal year, the *City of Fruitland Park's* governmental funds reported combined ending fund balances of \$7,751,965 an increase of \$1,654,996 in comparison with the prior year. However, the majority of the fund balances are restricted or committed, so there is only \$2,558,442 available for spending at the City's discretion.

The general fund is the chief operating fund of the *City of Fruitland Park*. At the end of the current fiscal year, unassigned fund balance of the General Fund was \$2,558,442, while total fund balance was \$7,478,699. As a measure of the General Fund's liquidity, it may be useful to compare both unassigned fund balance and total fund balance to total fund expenditures. Unassigned fund balance represents 35% while total fund balance is 101% of total General Fund expenditures.

The fund balance of the general fund increased by \$1,610,594 during the current fiscal year primarily due to increased property tax revenue, franchise fees, utility tax, and less spending in culture and recreation.

The fund balance of the community redevelopment fund increased by \$125,625 primarily due to increased property tax revenues and decreased capital outlay.

The capital projects fund balance decreased by \$81,223. This is an improvement from 2018 due to less capital outlay spending and increased intergovernmental revenues.

Proprietary Funds

The *City of Fruitland Park's* proprietary funds provide the same type of information found in the government-wide financial statements, but in more detail.

Unrestricted net position of the proprietary funds at the year-end amounted to (\$395,592). The total increase in net position for these funds was \$386,063. Other factors concerning the finances of these two funds have already been addressed in the discussion of the *City of Fruitland Park's* business-type activities.

General Fund Budgetary Highlights

During the year, actual revenues were \$1,398,879 more than budgeted revenues and actual expenditures were \$685,223 less than budgeted expenditures. Expenses were lower than budgeted primarily due to anticipated capital projects in culture and recreation that did not occur until after year end.

Capital Asset and Debt Administration

Capital Assets

The *City of Fruitland Park's* investment in capital assets for its governmental and business-type activities as of September 30, 2019, amounts to \$16,210,265 (net of accumulated depreciation), for an increase of \$881,227 from the prior year. This investment in capital assets includes land, buildings, improvements, machinery and equipment and infrastructure. The total increase in the City's investment in capital assets for the current fiscal year was 6% (a 19% increase for governmental activities, and 4% decrease for business-type activities).

City of Fruitland Park
Capital Assets (Net of Depreciation)

	Governmental Activities		Business-Type Activities		Total Primary Government	
	2019	2018	2019	2018	2019	2018
Land	\$ 1,313,703	\$ 1,313,703	\$ 354,952	\$ 354,952	\$ 1,668,655	\$ 1,668,655
Construction in progress	55,751	1,704,473	320,030	306,433	375,781	2,010,906
Buildings	4,079,632	1,494,908	61,749	68,245	4,141,381	1,563,153
Improvements	457,738	409,729	-	-	457,738	409,729
Machinery and equipment	1,301,477	1,037,898	92,647	120,159	1,394,124	1,158,057
Infrastructure	437,354	460,495	7,697,718	7,989,952	8,135,072	8,450,447
Intangibles	-	-	37,514	68,091	37,514	68,091
Total	\$ 7,645,655	\$ 6,421,206	\$ 8,564,610	\$ 8,907,832	\$ 16,210,265	\$ 15,329,038

Additional information on the *City of Fruitland Park's* capital assets can be found in Note 6 of this report.

Long-Term Debt

At the end of the current fiscal year, the *City of Fruitland Park* had total debt outstanding of \$3,558,399. This debt includes capital leases payable and notes payable. Additional information on long-term debt can be found in Note 8 of this report.

	Governmental Activities		Business-Type Activities		Total Primary Government	
	2019	2018	2019	2018	2019	2018
Capital leases	\$ 333,500	\$ 163,385	\$ -	\$ -	\$ 333,500	\$ 163,385
Notes payable	-	-	3,224,899	3,644,401	3,224,899	3,644,401
	\$ 333,500	\$ 163,385	\$ 3,224,899	\$ 3,644,401	\$ 3,558,399	\$ 3,807,786

The *City of Fruitland Park's* total debt decreased by \$249,387 (7%) during the current fiscal year, due to regularly scheduled payments and offset by a new capital lease.

Next Year's Budget and Rates

At September 30, 2019, the unassigned fund balance in the General Fund is \$2,558,442 and none of this balance was appropriated for expenditure in 2020. The City is expecting to incur enough revenues in 2020 to cover expenditures.

Requests for Information

This financial report is designed to provide a general overview of the *City of Fruitland Park's* finances for all those with an interest in the government's finances. Questions concerning any of the information should be addressed to the office of the Finance Director, *City of Fruitland Park*, 506 W. Berkman Street, Fruitland Park, Florida 34731.



This Page Intentionally Left Blank

Basic Financial Statements

City of Fruitland Park, Florida
Statement of Net Position
September 30, 2019

	Governmental Activities	Business-type Activities	Total
Assets:			
Cash and cash equivalents	\$ 7,016,865	\$ 450	\$ 7,017,315
Investments	400,000	-	400,000
Receivables, net	78,166	175,751	253,917
Internal balances	506,923	(506,923)	-
Due from other governments	365,662	-	365,662
Inventories	2,870	81,452	84,322
Prepays	2,529	1,296	3,825
Restricted cash and cash equivalents	-	1,060,054	1,060,054
Capital Assets:			
Capital assets not being depreciated	1,369,454	674,982	2,044,436
Capital assets being depreciated, net of accumulated depreciation	6,276,201	7,889,628	14,165,829
Total assets	16,018,670	9,376,690	25,395,360
Deferred Outflow of Resources:			
Deferred outflow of pension earnings	2,333,575	125,513	2,459,088
Liabilities:			
Accounts payable and accrued expenses	436,404	49,823	486,227
Due to other governmental agencies	25,578	-	25,578
Accrued interest	8,220	20,158	28,378
Deposits payable	1,454	169,020	170,474
Unearned revenue	157,614	-	157,614
Noncurrent liabilities:			
Due within one year	109,699	431,221	540,920
Due in more than one year	4,051,108	3,003,613	7,054,721
Total liabilities	4,790,077	3,673,835	8,463,912
Deferred Inflow of Resources:			
Deferred inflow of pension earnings	230,043	12,373	242,416
Net Position:			
Net investment in capital assets	7,312,155	5,339,711	12,651,866
Restricted for:			
Capital Improvements	2,644,088	823,200	3,467,288
Debt service	-	48,676	48,676
Community redevelopment	150,554	-	150,554
Police	8,324	-	8,324
Building Inspections	1,908,982	-	1,908,982
Police/Fire fee refunds	36,423	-	36,423
Unrestricted	1,271,599	(395,592)	876,007
Total net position	\$ 13,332,125	\$ 5,815,995	\$ 19,148,120

City of Fruitland Park, Florida
Statement of Activities
For the Year Ended September 30, 2019

Functions/Programs	Program Revenue				Net (Expense) Revenue and Changes in Net Position		
	Expenses	Charges for Services	Operating Grants and Contributions	Capital Grants and Contributions	Primary Government		
					Governmental Activities	Business-type Activities	Total
Primary Government							
Governmental Activities:							
General Government	\$ 1,347,411	\$ 81,289	\$ -	\$ -	\$ (1,266,122)	\$ -	\$ (1,266,122)
Public Safety	4,208,592	1,639,824	24,963	129,781	(2,414,024)	-	(2,414,024)
Transportation	408,720	1,251	382,369	-	(25,100)	-	(25,100)
Sanitation	525,294	628,083	-	-	102,789	-	102,789
Culture and Recreation	942,796	33,987	72,225	654,503	(182,081)	-	(182,081)
Interest on Long-term debt	16,732	-	-	-	(16,732)	-	(16,732)
Total governmental activities	7,449,545	2,384,434	479,557	784,284	(3,801,270)	-	(3,801,270)
Business-type activities:							
Water	1,671,164	1,090,233	-	358,948	-	(221,983)	(221,983)
Recreation Programs	32,067	44,543	-	-	-	12,476	12,476
Total business-type activities	1,703,231	1,134,776	-	358,948	-	(209,507)	(209,507)
Total primary government	\$ 9,152,776	\$ 3,519,210	\$ 479,557	\$ 1,143,232	(3,801,270)	(209,507)	(4,010,777)
General Revenues:							
Property taxes					2,901,496	-	2,901,496
Franchise taxes					679,339	-	679,339
Intergovernmental					1,386,780	-	1,386,780
Public service taxes					1,038,000	-	1,038,000
Unrestricted investment earnings					139,801	4,508	144,309
Miscellaneous					83,049	-	83,049
Transfers					(591,062)	591,062	-
Total general revenues and transfers					5,637,403	595,570	6,232,973
Change in net position					1,836,133	386,063	2,222,196
Net position, beginning					11,495,992	5,429,932	16,925,924
Net position, ending					\$ 13,332,125	\$ 5,815,995	\$ 19,148,120

The accompanying Notes to Financial Statements are an integral part of this statement.

City of Fruitland Park, Florida
Balance Sheet
Governmental Funds
September 30, 2019

	General Fund	Community Redevelopment Fund	Capital Projects Fund	Total Governmental Funds
Assets:				
Cash and cash equivalents	\$ 6,850,021	\$ 166,844	\$ -	\$ 7,016,865
Investments	200,000	100,000	100,000	400,000
Accounts receivable, net	78,166	-	-	78,166
Due from other governments	309,425	-	56,237	365,662
Due from other funds	538,364	-	-	538,364
Inventories	2,870	-	-	2,870
Prepaid costs	2,529	-	-	2,529
Total assets	\$ 7,981,375	\$ 266,844	\$ 156,237	\$ 8,404,456
Liabilities:				
Accounts payable	\$ 210,534	\$ 115,536	\$ 2,084	\$ 328,154
Accrued liabilities	108,250	-	-	108,250
Due to other governments	25,578	-	-	25,578
Due to other funds	-	-	31,441	31,441
Deposits payable	700	754	-	1,454
Unearned revenue	157,614	-	-	157,614
Total liabilities	502,676	116,290	33,525	652,491
Fund Balances:				
Nonspendable	5,399	-	-	5,399
Restricted	4,475,105	150,554	122,712	4,748,371
Committed	439,753	-	-	439,753
Unassigned	2,558,442	-	-	2,558,442
Total fund balances	7,478,699	150,554	122,712	7,751,965
Total liabilities and fund balances	\$ 7,981,375	\$ 266,844	\$ 156,237	\$ 8,404,456

City of Fruitland Park, Florida
Reconciliation of the Governmental Funds Balance Sheet to the
Statement of Net Position
September 30, 2019

Total Fund Balance, governmental funds	\$ 7,751,965
--	--------------

Amounts reported for governmental activities in the Statement of Net Position are different because:

Capital assets used in governmental activities are not current financial resources and therefore are not reported in this fund financial statement, but are reported in the governmental activities of the Statement of Net Position.	7,645,655
---	-----------

Deferred inflows and outflows of resources related to pension earning are not recognized in the governmental funds, however, they are recorded in net position under full accrual accounting	2,103,532
--	-----------

Long-term liabilities, including notes payable, are not due and payable in the current period and therefore are not reported in the funds:

Capital lease	\$ (333,500)	
Accrued interest payable	(8,220)	
Compensated absences	(102,475)	
Net pension liability	(3,724,832)	(4,169,027)
	<u> </u>	<u> </u>

Net Position of Governmental Activities in the Statement of Net Position	<u><u>\$ 13,332,125</u></u>
--	-----------------------------

City of Fruitland Park, Florida
Statement of Revenues, Expenditures and Changes in Fund Balances
Governmental Funds
For the Year Ended September 30, 2019

	General Fund	Community Redevelopment Fund	Capital Projects Fund	Total Governmental Funds
Revenues:				
Taxes:				
Property	\$ 2,567,649	\$ 333,847	\$ -	\$ 2,901,496
Franchise and utility	1,717,339	-	-	1,717,339
Fees and fines	32,173	-	-	32,173
Licenses and permits	690,290	-	-	690,290
Intergovernmental	1,835,389	-	690,943	2,526,332
Impact fees	124,289	-	-	124,289
Charges for services	1,661,971	-	-	1,661,971
Investment earnings	132,084	4,412	3,305	139,801
Miscellaneous	83,049	-	-	83,049
Total revenues	8,844,233	338,259	694,248	9,876,740
Expenditures:				
Current:				
General government	1,059,182	2,563	-	1,061,745
Public safety	3,626,504	-	-	3,626,504
Transportation	338,337	-	-	338,337
Sanitation/ other utility	525,294	-	-	525,294
Culture and recreation	1,792,796	-	-	1,792,796
Debt service:				
Principal	33,875	-	89,470	123,345
Interest	967	-	8,909	9,876
Capital Outlay	-	171,277	288,565	459,842
Total expenditures	7,376,955	173,840	386,944	7,937,739
Excess (deficiency) of revenues over expenditures	1,467,278	164,419	307,304	1,939,001
Other Financing Sources (Uses):				
Capital lease	293,460	-	-	293,460
Transfers in	89,856	-	-	89,856
Transfers out	(240,000)	(38,794)	(388,527)	(667,321)
Total other financing sources (uses in)	143,316	(38,794)	(388,527)	(284,005)
Net change in fund balances	1,610,594	125,625	(81,223)	1,654,996
Fund balances, beginning	5,868,105	24,929	203,935	6,096,969
Fund balances, ending	\$ 7,478,699	\$ 150,554	\$ 122,712	\$ 7,751,965

**Reconciliation of the Statement of Revenues, Expenditures and Changes
in Fund Balances of Governmental Funds to the Statement of Activities**

For the Year Ended September 30, 2019

Net Change in Fund Balances, total governmental funds:		\$	1,654,996
--	--	----	-----------

Amounts reported for governmental activities in the Statement of Activities are different because:

Governmental funds report outlays for capital assets as expenditures because such outlays use current financial resources. In contrast, the Statement of Activities reports only a portion of the outlay as expense. The outlay is allocated over the assets' estimated useful lives as depreciation expense for the period.

Expenditures for capital assets	\$	1,710,340	
Less: current year depreciation		<u>(485,891)</u>	1,224,449

Governmental funds report bond proceeds as current financial resources. In contrast, the Statement of Activities treats such issuance of debt as a liability. Governmental funds report repayment of bond principal as an expenditure. In contrast, the Statement of Activities treats such repayments as a reduction in long-term liabilities. This is the amount by which repayments exceeded proceeds.

Principal payments	\$	123,345	
Capital leases		<u>(293,460)</u>	(170,115)

Cash pension contributions reported in the funds were more than the calculated pension expense on the statement of activities, and therefore increased net position			(855,223)
---	--	--	-----------

Some expenses reported in the statement of activities do not require the use of current financial resources and these are not reported as expenditures in governmental funds.

Change in compensated absences	\$	(11,118)	
Change in accrued interest payable		<u>(6,856)</u>	<u>(17,974)</u>

Change in net position of governmental activities			<u>\$ 1,836,133</u>
--	--	--	----------------------------

City of Fruitland Park, Florida
Statement of Revenues, Expenditures and Changes in Fund Balance - Budget and Actual
General Fund
For the Year Ended September 30, 2019

	Budgeted Amounts		Actual Amounts, Budgetary Basis	Variance with Final Budget - Positive (Negative)
	Original	Final		
Revenues:				
Taxes:				
Property taxes	\$ 2,537,390	\$ 2,537,390	\$ 2,567,649	\$ 30,259
Franchise and utility	1,425,096	1,425,096	1,717,339	292,243
Fees and fines	16,508	16,508	32,173	15,665
Licenses and permits	276,500	276,500	690,290	413,790
Intergovernmental	1,129,594	1,452,975	1,835,389	382,414
Impact fees	81,266	81,266	124,289	43,023
Charges for services	1,550,468	1,550,468	1,661,971	111,503
Investment earnings	40,284	40,284	132,084	91,800
Miscellaneous	64,867	64,867	83,049	18,182
Total revenues	7,121,973	7,445,354	8,844,233	1,398,879
Expenditures:				
Current:				
General government	1,208,041	1,193,004	1,059,182	133,822
Public safety	3,622,093	3,680,521	3,626,504	54,017
Transportation	474,624	410,727	338,337	72,390
Sanitation/ other utility	629,663	629,663	525,294	104,369
Culture and recreation	1,362,008	2,113,421	1,792,796	320,625
Debt Service:				
Principal	-	-	33,875	(33,875)
Interest	-	-	967	(967)
Total expenditures	7,296,429	8,027,336	7,376,955	650,381
Excess (deficiency) of revenues over expenditures	(174,456)	(581,982)	1,467,278	2,049,260
Other Financing Sources (Uses):				
Capital lease	-	-	293,460	293,460
Transfers in	634,456	1,060,553	89,856	(970,697)
Transfers out	(460,000)	(478,571)	(240,000)	238,571
Total other financing sources	174,456	581,982	143,316	(438,666)
Net change in fund balances	-	-	1,610,594	1,610,594
Fund balance, beginning	5,868,105	5,868,105	5,868,105	-
Fund balance, ending	<u>\$ 5,868,105</u>	<u>\$ 5,868,105</u>	<u>\$ 7,478,699</u>	<u>\$ 1,610,594</u>

City of Fruitland Park, Florida
Statement of Revenues, Expenditures and Changes in Fund Balances - Budget and Actual
Community Redevelopment Special Revenue Fund
For the Year Ended September 30, 2019

	Budgeted Amounts		Actual Amounts, Budgetary Basis	Variance with Final Budget - Positive (Negative)
	Original	Final		
Revenues:				
Taxes:				
Property Taxes	\$ 329,392	\$ 329,392	\$ 333,847	\$ 4,455
Investment earnings	1,273	1,273	4,412	3,139
Total revenues	330,665	330,665	338,259	7,594
Expenditures:				
Current:				
General government	171,871	46,871	2,563	44,308
Capital outlay	120,000	245,000	171,277	73,723
Total expenditures	291,871	291,871	173,840	118,031
Excess (deficiency) of revenues over expenditures	38,794	38,794	164,419	125,625
Other Financing Uses:				
Transfers Out	(38,794)	(38,794)	(38,794)	-
Total other financing uses	(38,794)	(38,794)	(38,794)	-
Net change in fund balances	-	-	125,625	125,625
Fund balance, beginning	24,929	24,929	24,929	-
Fund balance, ending	\$ 24,929	\$ 24,929	\$ 150,554	\$ 125,625

City of Fruitland Park, Florida
Statement of Net Position
Proprietary Funds
September 30, 2019

	Enterprise Funds		
	Utility Fund	Recreation Programs Fund	Total
Assets:			
Current assets:			
Cash and cash equivalents	\$ 450	\$ -	\$ 450
Accounts receivable, net	175,751	-	175,751
Due from other governments	-	-	-
Prepaid items	1,296	-	1,296
Inventories	81,452	-	81,452
Restricted cash and cash equivalents	-	-	-
Total current assets	258,949	-	258,949
Noncurrent assets:			
Restricted cash and cash equivalents	1,060,054		1,060,054
Capital assets:			
Land	354,952	-	354,952
Construction in progress	320,030	-	320,030
Buildings	243,408	-	243,408
Infrastructure	10,829,813	-	10,829,813
Intangible assets	346,296	-	346,296
Machinery and equipment	521,751	-	521,751
Less accumulated depreciation	(4,051,640)	-	(4,051,640)
Net Capital assets	8,564,610	-	8,564,610
Total noncurrent assets	9,624,664	-	9,624,664
Total assets	9,883,613	-	9,883,613
Deferred Outflow of Resources:			
Deferred outflow of pension earnings	125,513	-	125,513

	Enterprise Funds		
	Utility Fund	Recreation Programs Fund	Total
Liabilities:			
Current Liabilities:			
Accounts payable	32,958	908	33,866
Salaries payable	15,957	-	15,957
Accrued interest payable	20,158	-	20,158
Due to other funds	491,095	15,828	506,923
Customer deposits payable	169,020	-	169,020
Compensated absences	1,918	-	1,918
Notes and loans payable, current	429,303	-	429,303
Total current liabilities	1,160,409	16,736	1,177,145
Noncurrent Liabilities:			
Compensated absences	7,673	-	7,673
Net pension liability	200,344	-	200,344
Notes and loans payable	2,795,596	-	2,795,596
Total noncurrent liabilities	3,003,613	-	3,003,613
Total liabilities	4,164,022	16,736	4,180,758
Deferred Inflows of Resources:			
Deferred inflow of pension earnings	12,373	-	12,373
Net Position:			
Net investment in capital assets	5,339,711	-	5,339,711
Restricted for capital improvements	823,200	-	823,200
Restricted for debt service	48,676	-	48,676
Unrestricted	(378,856)	(16,736)	(395,592)
Total net position	\$ 5,832,731	\$ (16,736)	\$ 5,815,995



This Page Intentionally Left Blank

City of Fruitland Park, Florida
Statement of Revenues, Expenses and Changes in Fund Net Position -
Proprietary Funds
For the Year Ended September 30, 2019

	Enterprise Funds		
	Utility Fund	Recreation Programs Fund	Total
Revenues:			
Charges for services	\$ 1,023,667	\$ 44,543	\$ 1,068,210
Other operating revenues	66,566	-	66,566
Total operating revenues	1,090,233	44,543	1,134,776
Operating Expenses:			
Personal services	496,393	-	496,393
Other operating expenses	742,133	32,067	774,200
Depreciation	358,204	-	358,204
Total operating expenses	1,596,730	32,067	1,628,797
Operating income (loss)	(506,497)	12,476	(494,021)
Nonoperating Revenues (Expenses):			
Interest and investment income	4,508	-	4,508
Interest expense	(74,434)	-	(74,434)
Total nonoperating revenue (expenses)	(69,926)	-	(69,926)
Income (loss) before transfers	(576,423)	12,476	(563,947)
Capital contributions	13,597	-	13,597
Impact fees	358,948	-	358,948
Transfers in	598,527	-	598,527
Transfers out	-	(21,062)	(21,062)
Change in net position	394,649	(8,586)	386,063
Total net position, beginning	5,438,082	(8,150)	5,429,932
Total net position, ending	\$ 5,832,731	\$ (16,736)	\$ 5,815,995

City of Fruitland Park, Florida
Statement of Cash Flows
Proprietary Funds
For the Year Ended September 30, 2019

	Utility Fund	Recreation Programs Fund	Total
Cash Flows from Operating Activities:			
Receipts from customers	\$ 1,071,698	\$ 44,543	\$ 1,116,241
Payments to suppliers	(928,936)	(33,665)	(962,601)
Payments to employees	(478,373)	-	(478,373)
Net cash provided (used) by operating activities	(335,611)	10,878	(324,733)
Cash Flows from Noncapital Financing Activities:			
Increase (decrease) in due to other funds	(393,455)	10,184	(383,271)
Net transfers out	-	(21,062)	(21,062)
Net transfers in	598,527	-	598,527
Net cash provided (used) by noncapital financing activities	205,072	(10,878)	194,194
Cash Flows from Capital and Related Financing Activities:			
Purchase of capital assets	(1,385)	-	(1,385)
Impact Fees	358,948	-	358,948
Principal paid on long-term debt	(419,503)	-	(419,503)
Interest paid on long-term debt	(76,695)	-	(76,695)
Capital grants	500,000	-	500,000
Net cash provided (used) by capital and related financing activities	361,365	-	361,365
Cash Flows from Investing Activities:			
Investment income	4,508	-	4,508
Net cash provided by investing activities	4,508	-	4,508
Net increase (decrease) in cash and cash equivalents	235,334	-	235,334
Cash and cash equivalents, beginning	825,170	-	825,170
Cash and cash equivalents, ending	\$ 1,060,504	\$ -	\$ 1,060,504
Classified As:			
Cash and cash equivalents	\$ 450	\$ -	\$ 450
Restricted cash and cash equivalents	1,060,054	-	1,060,054
Total	\$ 1,060,504	\$ -	\$ 1,060,504

	Utility Fund	Recreation Programs Fund	Total
Reconciliation of Operating Income to Net			
Cash Provided (Used) by Operating Activities:			
Operating income (loss)	\$ (506,497)	\$ 12,476	\$ (494,021)
Adjustments Not Affecting Cash:			
Depreciation and amortization	358,204	-	358,204
Change in Assets and Liabilities:			
Decrease (increase) in accounts receivable	(31,189)	-	(31,189)
Increase (decrease) in accounts payable	(185,863)	(1,598)	(187,461)
Increase (Decrease) in accrued liabilities	(2,614)	-	(2,614)
Decrease in compensated absences	1,428	-	1,428
Decrease in inventory	(940)	-	(940)
Increase in net pension liability	10,674	-	10,674
Increase in deferred outflows	12,353	-	12,353
Increase in deferred inflows	(3,821)	-	(3,821)
Increase in customer deposits	12,654	-	12,654
Total adjustments	170,886	(1,598)	169,288
Net Cash Provided (Used) by Operating Activities	\$ (335,611)	\$ 10,878	\$ (324,733)
Noncash Capital and Financing Activities:			
Contributed assets	\$ 13,597	\$ -	\$ 13,597
Total	\$ 13,597	\$ -	\$ 13,597

City of Fruitland Park, Florida
Statement of Fiduciary Net Position
Fiduciary Funds
September 30, 2019

	Firemen's Retirement Trust Fund
Assets:	
Cash	\$ 20,000
State contribution receivable	25,566
Investments:	
Mutual funds	589,587
Total Investments	589,587
Total assets	\$ 635,153
Liabilities:	
Accounts payable	\$ -
Total liabilities	-
Net Position:	
Net position restricted for pensions	\$ 635,153

City of Fruitland Park, Florida
Statement of Changes in Fiduciary Net Position
Fiduciary Funds
For the Year Ended September 30, 2019

	Firemen's Retirement Trust Fund
Additions:	
Contributions:	
Employer	\$ 989
Plan members	989
State of Florida	24,963
Total contributions	26,941
Investment Earnings:	
Net increase in fair value of investments	23,463
Interest/dividend income	9,354
Total net investment earnings	32,817
Total additions	59,758
Deductions:	
Benefits	6,656
Refunds of Contributions	679
Total deductions	7,335
Change in net position	52,423
Net position, beginning	582,730
Net position, ending	<u><u>\$ 635,153</u></u>



This Page Intentionally Left Blank

Notes to Financial Statements

NOTE 1 SUMMARY OF SIGNIFICANT ACCOUNTING POLICIES

Reporting Entity

The *City of Fruitland Park*, Florida ("the City") is a political subdivision of the state of Florida located in Lake County. The *City of Fruitland Park* was created by charter in 1927. The City operates under a Commission-Manager form of government and provides the following services as authorized by its charter: public safety (police, fire and building inspections), roads and streets, culture (library) and recreation, planning and zoning, and water, sewer and garbage utility service. Except for a few customers, utility services are provided only within the incorporated boundaries of the City.

In evaluating how to define the government, for financial reporting purposes, the City has considered all potential component units. The definition of the reporting entity is based primarily on the notion of financial accountability. A primary government is financially accountable for the organizations that make up its legal entity. It is also financially accountable for legally separate organizations if its officials appoint a voting majority of an organization's governing body, and either it is able to impose its will on that organization or there is a potential for the organization to provide specific financial benefits to, or to impose specific financial burdens on, the primary government. A primary government may also be financially accountable for governmental organizations that are fiscally dependent on it.

A primary government has the ability to impose its will on an organization if it can significantly influence the programs, projects or activities of, or the level of services performed or provided by, the organization. A financial benefit or burden relationship exists if the primary government (a) is entitled to the organizations' resources; (b) is legally obligated or has otherwise assumed the obligation to finance the deficits of, or provide financial support to, the organization; or (c) is obligated in some manner for the debt of the organization. In applying the above criteria, the City has one blended component unit as follows:

The City of Fruitland Park Community Redevelopment Fund

The *City of Fruitland Park* created the Community Redevelopment Agency in March of 1995. This is a dependent taxing district established in accordance with Chapter 163, Part III, Florida Statutes. Notification to affected taxing agency was done in compliance with Chapter 163.346, Part III, Florida Statutes. The incremental annual increase in tax over the base years will be used to fund projects designed to enhance and improve the described area. The City Commission, being the duly elected governmental body for the designated area, passed Resolution 95-012, which established the *City of Fruitland Park* as the Redevelopment Agency for the purpose of carrying out the community redevelopment programs and plans within the area and adopted a community development redevelopment plan. Through Ordinance 95-001 the City established the Community Redevelopment Trust Fund to account for all transactions generated by this special revenue fund. In September 2006, the City adopted Resolution 2006-022 to expand the CRA boundaries and modified the redevelopment plan.

Government-Wide and Fund Financial Statements

The government-wide financial statements (i.e., the statement of net position and the statement of activities) report information on all of the nonfiduciary activities of the City. For the most part, the effect of interfund activity has been removed from these statements. *Governmental activities*, which normally are supported by taxes and intergovernmental revenues, are reported separately from *business-type activities*, which rely to a significant extent on fees and charges for support.

The statement of activities demonstrates the degree to which the direct expenses of a given function or segment is offset by program revenues. *Direct expenses* are those that are clearly identifiable with a specific function or segment. *Program revenues* include 1) charges to customers or applicants who purchase, use, or directly benefit from goods, services, or privileges provided by a given function or segment and 2) grants and contributions that are restricted to meeting the operational or capital requirements of a particular function or segment. Taxes and other items not properly included among program revenues are reported instead as *general revenues*.

Separate financial statements are provided for governmental funds, proprietary funds, and fiduciary funds, even though the latter are excluded from the government-wide financial statements. Major individual governmental funds and major individual enterprise funds are reported as separate columns in the fund financial statements.

NOTE 1 SUMMARY OF SIGNIFICANT ACCOUNTING POLICIES (CONTINUED)

Measurement Focus, Basis of Accounting, and Financial Statement Presentation

The government-wide financial statements are reported using the *economic resources measurement focus* and the *accrual basis of accounting*, as are the proprietary fund and fiduciary fund financial statements. Revenues are recorded when earned and expenses are recorded when a liability is incurred, regardless of the timing of related cash flows. Property taxes are recognized as revenues in the year for which they are levied. Grants and similar items are recognized as revenue as soon as all eligibility requirements imposed by the provider have been met.

Governmental fund financial statements are reported using the *current financial resources measurement focus* and the *modified accrual basis of accounting*. Revenues are recognized as soon as they are both measurable and available. Revenues are considered to be *available* when they are collectible within the current period or soon enough thereafter to pay liabilities of the current period. For this purpose, the government considers revenues to be available if they are collected within 90 days of the end of the current fiscal period. Expenditures generally are recorded when a liability is incurred, as under accrual accounting. However, debt service expenditures, as well as expenditures related to compensated absences and claims and judgments, are recorded only when payment is due.

Property taxes, franchise taxes, licenses, and interest associated with the current fiscal period are all considered to be susceptible to accrual and so have been recognized as revenues of the current fiscal period. All other revenue items are considered to be measurable and available only when cash is received by the City.

The government reports the following funds:

Major Governmental Funds

General Fund - the government's primary operating fund. It accounts for all financial resources of the general government, except those required to be accounted for in another fund.

Community Redevelopment Fund - established as a dependent taxing district. The incremental annual increase in tax over the base years will be used to fund projects designed to enhance and improve the described area.

Capital Projects Fund - a capital projects fund used to account for the acquisition or construction of major capital facilities. The fund also accounts for discretionary sales surtax revenues that are legally restricted for expenditure on infrastructure and related debt.

Major Proprietary Funds

Utility Fund - used to account for the operations of the City's water and sewer utility operations, which are financed in a manner similar to private business enterprises, where the costs, including depreciation, of providing services to the general public on an ongoing basis are financed primarily through user charges.

Recreation Programs Fund - used for the receipt of recreation sports program fees and related direct costs associated with each recreation sports program (except for activities of the City's municipal swimming pool) sponsored by the City.

Fiduciary Funds

Firemen's Retirement Trust Fund - a pension trust fund that accounts for the accumulation of resources for pension benefit payments to qualified City volunteer firefighters.

As a general rule the effect of interfund activity has been eliminated from the government-wide financial statements. Exceptions to this general rule are other charges between the City's water function and various other functions of the government. Elimination of these charges would distort the direct costs and program revenues reported for the various functions concerned.

NOTE 1 SUMMARY OF SIGNIFICANT ACCOUNTING POLICIES (CONTINUED)

Amounts reported as *program revenues* include 1) charges to customers or applicants for goods, services, or privileges provided, 2) operating grants and contributions, and 3) capital grants and contributions, including special assessments. Internally dedicated resources are reported as *general revenues* rather than as program revenues. Likewise, general revenues include all taxes.

Proprietary funds distinguish *operating* revenues and expenses from *nonoperating* items. Operating revenues and expenses generally result from providing services and producing and delivering goods in connection with a proprietary fund's principal ongoing operations. The principal operating revenues of the City's water and recreation programs funds are charges to customers for sales and services. The City also recognizes as operating revenue the portion of tap fees intended to recover the cost of connecting new customers to the system. Operating expenses for enterprise funds include the cost of sales and services, administrative expenses, and depreciation on capital assets. All revenues and expenses not meeting this definition are reported as nonoperating revenues and expenses.

When both restricted and unrestricted resources are available for use, it is the government's policy to use restricted resources first, then unrestricted resources as they are needed.

Assets, Liabilities, Deferred Outflows/Inflows and Net Position/Fund Balance

Deposits and Investments

The government's cash and cash equivalents are considered to be cash on hand, demand deposits, and short-term investments with original maturities of three months or less from the date of acquisition.

Investments of the City are reported at fair value and are categorized within the fair value hierarchy established in accordance with GASB Statement No. 72, *Fair Value Measurement and Application*. The City's investments consist of investments authorized per their investment policy, adopted in accordance with Section 218.415, Florida Statutes.

Receivables and Payables

Activity between funds that are representative of lending/borrowing arrangements outstanding at the end of the fiscal year are referred to as either "due to/from other funds" (i.e., the current portion of interfund loans) or "advances to/from other funds" (i.e., the non-current portion of interfund loans). All other outstanding balances between funds are reported as "due to/from other funds". Any residual balances outstanding between the governmental activities and business-type activities are reported in the government-wide financial statements as "internal balances".

Advances between funds, as reported in the fund financial statements, are offset by a non-spendable fund balance in applicable governmental funds to indicate that they are not available for appropriation and are not expendable available financial resources.

All receivables are shown net of an allowance for uncollectable. The County bills and collects property taxes and remits them to the City. City property tax revenues are recognized when levied to the extent that they result in current receivables.

All property is reassessed according to its fair value on the lien date, or January 1 of each year. Taxes are levied on October 1 of each year. Discounts are allowed for early payment at the rate of 4% in the month of November, 3% in the month of December, 2% in the month of January, and 1% in the month of February. The taxes paid in March are without discount. All unpaid taxes become delinquent on April 1 following the year in which they are assessed. On or around May 31 following the tax year, certificates are sold for all delinquent taxes on real property.

Inventories and Prepaid Items

All inventories are valued at cost using the first-in/first-out (FIFO) method. Inventories of governmental funds are recorded as expenditures when consumed rather than when purchased.

NOTE 1 SUMMARY OF SIGNIFICANT ACCOUNTING POLICIES (CONTINUED)

Certain payments to vendors reflect costs applicable to future accounting periods and are recorded as prepaid items in both government-wide and fund financial statements.

Restricted Assets

The use of certain assets of the Utility fund may be restricted by specific provisions of bond resolutions, city ordinances and/or agreements with various parties. Assets so designated are identified as restricted assets on the balance sheet.

Capital Assets

Capital assets, which include property, plant, equipment, and infrastructure assets (e.g., roads, bridges, sidewalks, and similar items), are reported in the applicable governmental or business-type activities columns in the government-wide financial statements. Capital assets are defined by the City's capitalization policy as assets with an initial, individual cost of \$500 or more and an estimated useful life in excess of one year. Such assets are recorded at historical cost or estimated historical cost if purchased or constructed. Donated capital assets are recorded at acquisition value at the date of donation.

The costs of normal maintenance and repairs that do not add to the value of the asset or materially extend asset lives are not capitalized.

Major outlays for capital assets and improvements are capitalized as projects are constructed. Interest incurred during the construction phase of capital assets of business-type activities is included as part of the capitalized value of the assets constructed. No interest was capitalized for the year ended September 30, 2019.

Property, plant, and equipment of the City are depreciated using the straight-line method over the following estimated useful lives:

	<u>Years</u>
Buildings	30-40
Improvements	10-20
Infrastructure	20-50
Equipment	5-10
Intangible assets	10

Compensated Absences

It is the City's policy to permit employees to accumulate earned but unused vacation benefits. Since the City's policy is to pay all vacation benefits when employees separate from service, these amounts are accrued when incurred in the government-wide and proprietary fund financial statements. A liability for these amounts is reported in governmental funds only if they have matured, for example, as a result of employee resignations and retirements.

Long-Term Obligations

In the government-wide financial statements, and proprietary fund types in the fund financial statements, long-term debt and other long-term obligations are reported as liabilities in the applicable governmental activities, business-type activities, or proprietary fund type statement of net position. Bond premiums and discounts are deferred and amortized over the life of the bonds using the effective interest method. Bonds payable are reported net of the applicable bond premium or discount.

In the fund financial statements, governmental fund types recognize bond premiums and discounts during the current period. The face amount of debt issued is reported as other financing sources. Premiums received on debt issuances are reported as other financing sources while discounts on debt issuances are reported as other financing uses.

NOTE 1 SUMMARY OF SIGNIFICANT ACCOUNTING POLICIES (CONTINUED)

Deferred Outflows/Inflows of Resources

In addition to assets, the statement of financial position will sometimes report a separate section for deferred outflows of resources. This separate financial statement element, *deferred outflows of resources*, represents a consumption of net position that applies to a future period(s) and so will *not* be recognized as an outflow of resources (expense/expenditure) until then. The City has one item that qualifies for reporting in this category, which is the deferred outflows of pension earnings.

In addition to liabilities, the statement of financial position will sometimes report a separate section for deferred inflows of resources. This separate financial statement element, *deferred inflows of resources*, represents an acquisition of net position that applies to a future period(s) and so will *not* be recognized as an inflow of resources (revenue) until that time. The City has one item that qualifies for reporting in this category, which is the deferred inflows of pension earnings.

Net Position Flow Assumptions

Sometimes the City will fund outlays for a particular purpose from both restricted (e.g., restricted bond or grant proceeds) and unrestricted resources. In order to calculate the amounts to report as restricted net position and unrestricted net position in the government-wide and proprietary fund financial statements a flow assumption must be made about the order in which the resources are considered to be applied. It is the City's policy to consider restricted net position to have been depleted before unrestricted net position is applied.

Fund Balance Flow Assumptions

Sometimes the City will fund outlays for a particular purpose from both restricted and unrestricted resources (the total of committed, assigned, and unassigned fund balances). In order to calculate the amounts to report as restricted, committed, assigned, and unassigned fund balance in the governmental fund financial statements a flow assumption must be made about the order in which the resources are considered to be applied. It is the City's policy to consider restricted fund balance to have been depleted before using any of the components of unrestricted fund balance. Further, when the components of unrestricted fund balance can be used for the same purpose, committed fund balance is depleted first, followed by assigned fund balance. Unassigned fund balance is applied last.

Fund Balance Policies

Fund balance of governmental funds is reported in various categories based on the nature of any limitations requiring the use of resources for specific purposes. The City itself can establish limitations on the use of resources through either a commitment (committed fund balance) or an assignment (assigned fund balance).

The committed fund balance classification includes amounts that can be used only for the specific purposes determined by a formal action of the city's highest level of decision-making authority. The Commission is the highest level of decision-making authority for the city that can, by adoption of an ordinance prior to the end of the fiscal year, commit fund balance. Once adopted, the limitation imposed by the ordinance remains in place until a similar action is taken (the adoption of another ordinance) to remove or revise the limitation.

Amounts in the assigned fund balance classification are intended to be used by the city for specific purposes but do not meet the criteria to be classified as committed. The commission has maintained authority to assign fund balance. The commission may also assign fund balance as it does when appropriating fund balance to cover a gap between estimated revenue and appropriations in the subsequent year's appropriated budget. Unlike commitments, assignments generally only exist temporarily. In other words, an additional action does not normally have to be taken for the removal of an assignment. Conversely, as discussed above, an additional action is essential to either remove or revise a commitment.

NOTE 1 SUMMARY OF SIGNIFICANT ACCOUNTING POLICIES (CONTINUED)

Use of Estimates

The preparation of financial statements in conformity with GAAP requires management to make estimates and assumptions that affect the reported amounts of assets, liabilities and disclosure of contingent assets and liabilities as of the financial statement date and the reported amounts of revenues and expenses or expenditures during the reporting period. Actual results could differ from those estimates.

New Accounting Standards

In fiscal year 2019, the City implemented Government Accounting Standards Board (GASB) Statement No. 88, *Certain Disclosures Related to Debt, Including Direct Borrowings and Direct Placements*. The statement requires additional note disclosures for certain debt issues. There was no effect on beginning balances for the City.

Additionally, the GASB has issued Statement No. 83, *Certain Asset Retirement Obligations* that is effective for this fiscal year. The City has reviewed this statement and determined that this pronouncement has no discernable impact on these financial statements.

NOTE 2 RECONCILIATION OF GOVERNMENT-WIDE AND FUND FINANCIAL STATEMENTS

Explanation of Certain Differences Between the Governmental Fund Balance Sheet and the Government-Wide Statement of Net Positions:

The governmental fund balance sheet includes a reconciliation between *fund balance - total governmental funds* and *net position - governmental activities* as reported in the government-wide statement of net position.

Explanation of Certain Differences Between the Governmental Fund Statement of Revenues, Expenditures, and Changes in Fund Balances and the Government-Wide Statement of Activities:

The governmental fund statement of revenues, expenditures, and changes in fund balances includes a reconciliation between *net changes in fund balances - total governmental funds* and *changes in net positions of governmental activities* as reported in the government-wide statement of activities.

NOTE 3 STEWARDSHIP, COMPLIANCE, AND ACCOUNTABILITY

Budgetary Information

The City follows these procedures in establishing the budgetary data reflected in the financial statements:

1. Prior to the end of the fiscal year, the City Manager submits to the City Commission a proposed operating budget for the fiscal year commencing the following October 1. The operating budget includes proposed expenditures and the means of financing them.
2. Public workshops are held where the Commission, City Manager and department heads refine budget detail items. Public hearings are held to obtain taxpayer comments. The budget is then enacted through passage of a resolution no later than September 30.
3. Appropriations are authorized by resolution at the department level. These are the legal levels of budgetary control. Administrative control is maintained through the establishment of more detailed line-item budgets.
4. The City Manager is authorized to transfer budgeted amounts between line items within any department; however, any revisions that alter the total expenditures of a department must be approved by a majority vote of the City Commission.
5. Formal budgetary integration is employed as a management control device during the year for governmental funds. Total budgeted appropriations within a governmental fund type may not be exceeded legally.
6. Encumbrance accounting is currently employed by the City. Encumbrances outstanding at year end do not constitute expenditures or liabilities and are not reported as committed or assigned fund balances. All appropriations and encumbrances lapse at year end.

NOTE 3 STEWARDSHIP, COMPLIANCE, AND ACCOUNTABILITY (CONTINUED)

Expenditures in Excess of Appropriations

Expenditures in the capital outlay function of the Capital Projects Fund exceeded appropriations. These excess expenditures were funded by available fund balance.

NOTE 4 DEPOSITS AND INVESTMENTS

Deposits

All bank deposits were covered by Federal Depository Insurance or by collateral held in banks that are members of the State of Florida's Collateral Pool as specified under Florida law. Florida Statutes provide for collateral pooling by banks and savings and loans. This limits local government deposits to "authorized depositories".

Investments

The City's investment policies are governed by State Statutes and City ordinances. City ordinance allows investments in any financial institution that is a qualified public depository of the State of Florida as identified by the State Treasurer, in accordance with Chapter 280 of the Florida Statutes. Authorized investments are:

1. U.S. Government obligations, U.S. Government agency obligations, and U.S. Government instrumentality obligations;
2. Canadian Government obligation (payable in local currency);
3. Certificates of Deposit;
4. Savings and loan association deposits;
5. Prime bankers acceptances;
6. Prime commercial paper;
7. Investment-grade obligations of state, provincial and local governments and public authorities;
8. Money market mutual funds regulated by the Securities and Exchange Commission and whose portfolios consist only of domestic securities;
9. Statewide investment pools;
10. Mutual funds;
11. The Local Government Surplus Funds Trust Fund, or any intergovernmental investment pool authorized pursuant to the Florida interlocal Cooperation Act, as provided as provided in F.S. § 163.01;
12. Securities and Exchange Commission registered money market funds with the highest credit quality rating from a nationally recognized rating agency;
13. Savings accounts in state-certified qualified public depositories, as defined in F.S. § 280.02;
14. Certificates of deposit in state-certified qualified public depositories, as defined in F.S. § 280.02;
15. Direct obligations of the U.S. Treasury;
16. Federal agencies and instrumentalities.

Interest Rate Risk

Interest rate risk exists when there is a possibility that changes in interest rates could adversely affect an investment's fair value. The City's investment policy does not specifically address interest rate risk.

NOTE 4 DEPOSITS AND INVESTMENTS (CONTINUED)

Credit Risk

The City's investment policy limits its investments to the State Board of Administration investment pool, certificates of deposit, highly rated money market funds, government obligation, and mutual funds. The City's mutual bond fund investments are not rated.

Custodial Credit Risk

Custodial risk is the risk that, in the event of the failure of the counterparty, the government will not be able to recover the value of its investments or collateral securities that are in the possession of an outside party. At September 30, 2019, none of the Trust investments listed are exposed to custodial credit risk because their existence is not evidenced by securities that exist in physical or book entry form.

The State Board of Administration (SBA) Local Government Investment Pool (LGIP), operated by the Florida State Board of Administration, is a "2a-7 like" pool in accordance with GASB 31; therefore, it is not presented at fair value but at its actual pooled share price which approximates fair value. The LGIP is not a registrant with the SEC; however, the State of Florida does provide regulatory oversight.

Investments held by the City at September 30, 2019 are detailed below:

<u>Investment Type</u>	<u>Fair Value</u>	<u>Credit Rating</u>	<u>Weighted Avg. Maturity</u>
Florida Prime	\$ 6,263,743	AAAm	37 days
Certificates of deposit	400,000	N/A	N/A
	<u>\$ 6,663,743</u>		

Fair Value

The City categorizes its fair value measurements within the fair value hierarchy established by generally accepted accounting principles. The fair value is the price that would be received to sell an asset, or paid to transfer a liability, in an orderly transaction between market participants at the measurement date. The hierarchy is based on the valuation inputs used to measure the fair value of the asset. The City uses a market approach in measuring fair value that uses prices and other relevant information generated by market transaction involving identical or similar assets, liabilities, or groups of assets and liabilities.

Assets or liabilities are classified into one of three levels. Level 1 is the most reliable and is based on quoted prices for identical assets, or liabilities, in an active market. Level 2 uses significant other observable inputs when obtaining quoted prices for identical or similar assets, or liabilities, in markets that not active. Level 3 is the least reliable and uses significant unobservable inputs that uses the best information available under the circumstances, which includes the City's own data in measuring unobservable inputs.

NOTE 4 DEPOSITS AND INVESTMENTS (CONTINUED)

The City has the following recurring fair value measurements as of September 30, 2019:

<u>Investments Valued by Fair Value Level</u>		<u>Quoted Prices in Active Markets for Identical Assets (Level 1)</u>	<u>Significant Other Observable Inputs (Level 2)</u>
Pension Mutual Funds	\$ 589,587	\$ -	\$ 589,587
	<u>\$ 589,587</u>	<u>\$ -</u>	<u>\$ 589,587</u>

NOTE 5 RECEIVABLES

Receivables as of year-end for the City's individual major funds and nonmajor funds, including the applicable allowances for uncollectible accounts, are as follows:

	<u>General Fund</u>	<u>Utility Fund</u>	<u>Total</u>
Receivables:			
Accounts	\$ 78,166	\$ 183,506	\$ 261,672
Less allowance for uncollectible accounts	-	(7,755)	(7,755)
	<u>\$ 78,166</u>	<u>\$ 175,751</u>	<u>\$ 253,917</u>

SECTION LEFT INTENTIONALLY BLANK

NOTE 6 CAPITAL ASSETS

Capital asset activity for the year ended September 30, 2019 was as follows:

	Beginning Balance	Increases	Decreases	Ending Balance
Governmental Activities:				
Capital assets, not being depreciated:				
Land	\$ 1,313,703	\$ -	\$ -	\$ 1,313,703
Construction in progress	1,704,473	1,088,882	(2,737,604)	55,751
Total capital assets, not being depreciated	3,018,176	1,088,882	(2,737,604)	1,369,454
Capital assets, being depreciated:				
Buildings	2,610,353	2,660,179	-	5,270,532
Improvements	1,138,350	81,273	-	1,219,623
Machinery and equipment	2,795,968	617,610	-	3,413,578
Infrastructure	687,726	-	-	687,726
Total capital assets, being depreciated	7,232,397	3,359,062	-	10,591,459
Less accumulated depreciation for:				
Buildings	(1,115,445)	(75,455)	-	(1,190,900)
Improvements	(728,621)	(33,264)	-	(761,885)
Machinery and equipment	(1,758,070)	(354,031)	-	(2,112,101)
Infrastructure	(227,231)	(23,141)	-	(250,372)
Total accumulated depreciation	(3,829,367)	(485,891)	-	(4,315,258)
Total capital assets, being depreciated, net	3,403,030	2,873,171	-	6,276,201
Government activities capital assets, net	\$ 6,421,206	\$ 3,962,053	\$ (2,737,604)	\$ 7,645,655

NOTE 6 CAPITAL ASSETS (CONTINUED)

	Beginning Balance	Increases	Decreases	Ending Balance
Business-type Activities:				
Capital assets, not being depreciated:				
Land	\$ 354,952	\$ -	\$ -	\$ 354,952
Construction in progress	306,433	13,597	-	320,030
Total capital assets, not being depreciated	661,385	13,597	-	674,982
Capital assets, being depreciated:				
Buildings	243,408	-	-	243,408
Infrastructure	10,829,813	-	-	10,829,813
Machinery and equipment	520,366	1,385	-	521,751
Intangible assets	346,296	-	-	346,296
Total capital assets, being depreciated	11,939,883	1,385	-	11,941,268
Less accumulated depreciation for:				
Buildings	(175,163)	(6,496)	-	(181,659)
Improvements/Infrastructure	(2,839,861)	(292,234)	-	(3,132,095)
Machinery and equipment	(400,207)	(28,897)	-	(429,104)
Intangible assets	(278,205)	(30,577)	-	(308,782)
Total accumulated depreciation	(3,693,436)	(358,204)	-	(4,051,640)
Total capital assets, being depreciated, net	8,246,447	(356,819)	-	7,889,628
Business-type activities capital assets, net	\$ 8,907,832	\$ (343,222)	\$ -	\$ 8,564,610

Depreciation expense was charged to functions/programs as follows:

Governmental Activities:	
General government	\$ 59,029
Public safety	226,110
Transportation	87,717
Culture and recreation	113,035
Total depreciation expense, governmental activities	\$ 485,891
Business-type Activities:	
Utility	\$ 358,204
Total depreciation expense, business type activities	\$ 358,204

NOTE 7 LEASES

Capital Leases

The City has entered into lease agreements as lease for financing the acquisition of vehicles and equipment. These lease agreements qualify as capital leases for accounting purposes and, therefore, have been recorded at the present value of their future minimum lease payments as of the inception date.

The assets acquired through capital leases are as follows:

	Governmental Activities	Business-type Activities
Assets		
Machinery and equipment	\$ 667,828	\$ -
Less: Accumulated depreciation	(300,036)	-
Total	\$ 367,792	\$ -

The future minimum lease obligations and the net present value of these minimum lease payments as of September 30, 2019 were as follows:

Year Ending September 30	Governmental Activities	Business-type Activities
2020	\$ 101,016	\$ -
2021	44,219	-
2022	33,875	-
2023	33,875	-
2024	33,875	-
2025-2028	135,500	-
Total minimum lease payments	382,360	-
Less: Amount representing interest	(48,860)	-
	\$ 333,500	\$ -

NOTE 8 LONG-TERM DEBT

State Revolving Fund Loans

On September 17, 2001, the City entered into a loan agreement with the State of Florida Department of Environmental Protection under the Clean Water State Revolving Fund (SRF) loan program. The purpose of the loan was to provide funding for preconstruction planning and engineering activities for a sewer utility system for the City's highway commercial corridor. Maximum borrowing under this agreement was \$237,108. All preconstruction activities have been completed, and all loan disbursements have been received.

Interest accrues on the outstanding balance at a rate of 3.16% per year. Semi-annual loan payments of \$8,165 are due each February 15 and August 15 through February 15, 2026. Total principal and interest remaining to be paid on this series is \$106,145. For the year ended September 30, 2019, principal and interest paid on this series was \$16,330. The net revenue of the water and sewer utility is pledged as security for repayment and totaled \$215,163 in 2019.

NOTE 8 LONG-TERM DEBT (CONTINUED)

On March 29, 2005, the City entered into a second loan agreement with the State under the Clean Water SRF loan program. The purpose of the loan was to provide funding for construction of a sewer utility system, consisting of a 98,000 gallons per day wastewater treatment plant and a low-pressure sewer collection system along the City's highway commercial corridor. Maximum borrowing under this agreement is \$2,393,745. All loan disbursements have been received. The total amount borrowed was \$1,937,529.

Semi-annual loan payments of \$76,589 began on August 15, 2006. Beginning February 15, 2010, the semi-annual loan payments were reduced to \$60,669, and continue each February 15 and August 15 thereafter through February 15, 2026. Total principal and interest remaining to be paid on this series is \$788,700. For the year ended September 30, 2019, principal and interest paid on this series was \$121,339. The net revenue of the water and sewer utility is pledged as security for repayment and totaled \$215,163 in 2019.

In the event of default, the Florida Department of Environmental Protection may cause to establish rates and collect fees, require the City to account for all moneys received and used, appoint a receiver to manage the Water and Sewer Systems, intercept delinquent amounts plus a penalty due to the City under State Revenue Sharing, recover all amounts due including costs of collection and attorney fees, and accelerate the repayment schedule or increase the interest rate by a factor of up to 1.667.

Florida Department of Transportation Note

On May 2, 2011 the City Signed a promissory note with the State of Florida Department of Transportation (FDOT) in the amount of \$913,460. In exchange, the City agreed to have FDOT move water and sewer utility lines out of State highway right-of-way in order to allow FDOT to complete a highway widening project. The note carries a 0% interest rate and is payable in 30 equal annual installments beginning October 15, 2014. The amount of the note was an estimate of the utility construction cost, and the note states that in the event that the actual cost of the utility relocation work is different, that a new promissory note will be executed for the actual cost amount. The note is secured by gross revenues of the water and sewer utility. In the event of default, the entire remaining unpaid principal balance shall become immediately due and payable in at the option of FDOT.

At September 30, 2013, the utility work was complete, and the City recorded estimated costs of \$619,882. The highway project was completed in June 2014, and FDOT adjusted the note to the actual costs of \$425,588.

Total principal and interest remaining to be paid on this series is \$340,471. For the fiscal year, principal paid on this series was \$14,186 and total pledged revenue was \$1,453,689.

2016 Capital Improvement Revenue Note

In January 2016, the City issued a Capital Improvement Revenue Note Series 2016 in the amount of \$2,500,000, at an interest rate of 2.33 percent, provided for the cost of acquiring and constructing improvements to the City's Wastewater System and related improvements. The note is secured by infrastructure sales surtax received by the City and recorded in the Capital Projects Fund. In the event of default, the Note holder may increase the interest rate by 2.0%, and recover all expenses incurred including attorney fees.

Total principal and interest remaining to be paid on this series is \$2,238,216. For the fiscal year, principal and interest paid on this series was \$344,341 and total pledged revenue was \$690,943.

NOTE 8 LONG-TERM DEBT (CONTINUED)

Annual debt service requirements to maturity for notes payable are as follows:

Year Ending September 30,	Business-Type Activities	
	Principal	Interest
2020	\$ 429,303	\$ 66,892
2021	439,344	56,851
2022	449,630	46,566
2023	460,165	36,031
2024	470,956	25,240
2025-2029	776,891	17,051
2030-2034	70,930	-
2035-2039	70,930	-
2040-2043	56,750	-
Total	\$ 3,224,899	\$ 248,631

Changes in Long-Term Liabilities

Long-term liability activity for the year ended September 30, 2019 was as follows:

	Beginning Balance	Additions	Reductions	Ending Balance	Due Within One Year
Governmental Activities:					
Capital lease	\$ 163,385	\$ 293,460	\$ (123,345)	\$ 333,500	\$ 89,204
Compensated absences	91,357	59,799	(48,681)	102,475	20,495
Net pension liability	2,136,831	1,588,001	-	3,724,832	-
Governmental activity long-term liabilities	\$ 2,391,573	\$ 1,941,260	\$ (172,026)	\$ 4,160,807	\$ 109,699
Business-Type Activities:					
Notes payable - direct borrowing:					
SRF Loan, preconstruction	\$ 108,287	\$ -	\$ (13,010)	\$ 95,277	\$ 13,424
SRF Loan, construction	824,502	-	(101,195)	723,307	103,761
FDOT Note	354,658	-	(14,188)	340,470	14,186
Capital Improvement Note	2,356,955	-	(291,110)	2,065,845	297,932
Total notes payable	3,644,402	-	(419,503)	3,224,899	429,303
Compensated absences	8,163	5,132	(3,704)	9,591	1,918
Net pension liability	189,670	10,674	-	200,344	-
Business-type activity long-term liabilities	\$ 3,842,235	\$ 15,806	\$ (423,207)	\$ 3,434,834	\$ 431,221

The governmental activities liabilities for compensated absences and pension related liabilities are generally liquidated by the general fund.

NOTE 9 INTERFUND RECEIVABLES, PAYABLES AND TRANSFERS

Interfund transfers for the year ended September 30, 2019 are summarized below:

Transfers Out:	Transfers In		
	General Fund	Utility Fund	Total
General Fund	\$ -	\$ 240,000	\$ 240,000
Community redevelopment	38,794	-	38,794
Capital projects	30,000	358,527	388,527
Recreation programs	21,062	-	21,062
	<u>\$ 89,856</u>	<u>\$ 598,527</u>	<u>\$ 688,383</u>

Transfers out of the Community redevelopment fund was to fund related portions of personnel wages related to Community redevelopment projects. The other transfers were completed to support operations.

Amounts payable by the Capital Projects Fund, Utility Fund, and Recreation Programs Fund to the General Fund relate to disbursements made on behalf of the respective funds near the end of the fiscal year. Balances are expected to be collected in these funds and reimbursed to the General Fund in the subsequent year.

NOTE 10 DEFINED BENEFIT RETIREMENT PLANS

Florida Retirement System

Effective February 1, 2015, the City joined the State of Florida Retirement System (FRS) for the covered groups of Police and General Employees. The FRS is a cost-sharing multiple employer public employee retirement system administered by the State of Florida Department of Management Services, Division of Retirement, to provide retirement and survivor benefits to participating public employees. Chapter 121, Florida Statutes, establishes the authority for participant eligibility, contribution requirements, vesting eligibility and benefit provisions.

Early retirement benefits may also be provided; however, there is a reduction in benefits for each year prior to normal retirement. Generally, membership was compulsory for all full-time and part-time employees. There is a 3% requirement for employees to contribute to FRS effective July 1, 2011.

The 2007 Florida Legislature continued the uniform contribution rate system under which participating employers make uniform contributions to support the FRS Pension Plan and the Retiree Health Insurance Subsidy (HIS Plan). Under Section 121.405, Florida Statutes, FRS also provides a defined contribution plan (Investment Plan) alternative to the FRS defined benefit pension plan. Employers contribute based upon blended rates determined as a percentage of the total payroll for each class or subclass of FRS membership, regardless of which retirement plan individuals elect.

The State of Florida issues a report that includes financial statements and required supplementary information for FRS. That report may be obtained by writing to Florida Retirement System, Tallahassee, Florida 32399-1560.

Funding Policy

The FRS has ten (10) classes of membership. Only two (2) classes are applicable to the City's eligible employees. These two (2) classes, with descriptions and contribution rates in effect during the period ended September 30, 2019 are as follows:

NOTE 10 DEFINED BENEFIT RETIREMENT PLANS (CONTINUED)

Regular Class - Members not qualifying for other classes (11.47% [includes 3% employee contribution] from July 1, 2019 through September 30, 2019 and 11.26% [includes 3% employee contribution] from October 1, 2018 through June 30, 2018.)

Special Risk Class - Members employed as law enforcement officers, firefighters, or correctional officers and meet the criteria set to qualify for this class (28.48% [includes 3% employee contribution] from July 1, 2019 through September 30, 2019 and 27.50% [includes 3% employee contribution] from October 1, 2018 through June 30, 2018.)

Pension Plan (FRS)

Plan Description

The Pension Plan is a cost-sharing multiple-employer defined benefit pension plan, with a Deferred Retirement Option Program ("DROP") for eligible employees.

Benefits Provided

Benefits under the Pension Plan are computed on the basis of age, average final compensation, and service credit. For Pension Plan members enrolled before July 1, 2011, Regular class members who retire at or after age 62 with at least six years of credited service or 30 years of service regardless of age are entitled to a retirement benefit payable monthly for life, equal to 1.6% of their final average compensation based on five highest years of salary, for each year of credited service. Vested members with less than 30 years of service may retire before age 62 and receive reduced retirement benefits. Special Risk class members (sworn law enforcement officers, firefighters, and correctional officers) who retire at or after age 55 with at least six years of credited service, or with 25 years of service regardless of age, are entitled to a retirement benefit payable monthly for life, equal to 3.0% of their final average compensation based on the five highest years of salary for each year of credited service.

As provided in Section 121.101, Florida Statutes, if the member is initially enrolled in the Pension Plan before July 1, 2011, and all service credit was accrued before July 1, 2011, the annual cost-of-living adjustment is three percent per year. If the member is initially enrolled before July 1, 2011, and has service credit on or after July 1, 2011, there is an individually calculated cost-of living adjustment.

The annual cost-of-living adjustment is a proportion of three percent determined by dividing the sum of the pre-July 2011 service credit by the total service credit at retirement multiplied by three percent.

In addition to the above benefits, the DROP program allows eligible members to defer receipt of monthly retirement benefit payments while continuing employment with a FRS employer for a period not to exceed 60 months after electing to participate. Deferred monthly benefits are held in the FRS Trust Fund and accrue interest. There are no required contributions by DROP participants.

Contributions

Effective July 1, 2011, all enrolled members of the FRS, other than DROP participants are required to contribute three percent of their salary to the FRS. In addition to member contributions, governmental employers are required to make contributions to the FRS based on state-wide contribution rates established by the Florida Legislature. These rates are updated as of July 1 of each year.

The employer contribution rates include 1.66% and 1.66% HIS Plan subsidy for the periods October 1, 2018 through June 30, 2019 and from July 1, 2019 through September 30, 2019, respectively.

The City's contributions, including employee contributions, to the Pension Plan totaled \$249,879 for the fiscal year ended September 30, 2019.

NOTE 10 DEFINED BENEFIT RETIREMENT PLANS (CONTINUED)

Pension Liabilities, Pension Expense, and Deferred Outflows of Resources and Deferred Inflows of Resources Related to Pensions
At September 30, 2019, the City reported a liability of \$3,080,262 for its proportionate share of the Pension Plan's net pension liability. The net pension liability was measured as of June 30, 2019, and the total pension liability used to calculate the net pension liability was determined by an actuarial valuation as of July 1, 2019. The City's proportionate share of the net pension liability was based on the City's 2018-19 fiscal year contributions relative to the 2017-18 fiscal year contributions of all participating members. At June 30, 2019, the City's proportionate share was .008944 percent, which was an increase of .002659 percent from its proportionate share measured as of June 30, 2018.

For the fiscal year ended September 30, 2019, the City recognized pension expense of \$737,946. In addition, the City reported deferred outflows of resources and deferred inflows of resources related to pensions from the following sources:

Description	Deferred Outflow of Resources	Deferred Inflows of Resources
Differences between expected and actual experience	\$ 182,705	\$ 1,912
Change of assumptions	791,170	-
Net difference between projected and actual earnings on pension plan investments	-	170,421
Changes in proportion and differences between pension plan contributions and proportionate share of contributions	811,937	-
Pension plan contributions subsequent to the measurement date	61,699	-
	<u>\$ 1,847,511</u>	<u>\$ 172,333</u>

The deferred outflows of resources related to the Pension Plan, totaling \$61,699 resulting from City contributions to the Plan subsequent to the measurement date, will be recognized as a reduction of the net pension liability in the fiscal year ended September 30, 2020. Other amounts reported as deferred outflows of resources and deferred inflows of resources related to the Pension Plan will be recognized in pension expense as follows:

Year Ended September 30,	
2020	\$ 524,362
2021	284,730
2022	356,705
2023	270,697
2024	133,225
Thereafter	43,760

NOTE 10 DEFINED BENEFIT RETIREMENT PLANS (CONTINUED)

Actuarial Assumptions

The total pension liability in the June 30, 2019 actuarial valuation was determined using the following actuarial assumption, applied to all period included in the measurement:

Inflation	2.60 %
Salary Increases	3.25%, average, including inflation
Investment Rate of Return	6.90%, net of pension plan investment expense, including inflation

Mortality rates were based on the PUB2010 base table varies by member category and sex, projected generationally with Scale MP 2018.

The actuarial assumptions used in the June 30, 2019, valuation were based on the results of an actuarial experience study for the period July 1, 2013 through June 30, 2018.

The long-term expected rate of return on Pension Plan investments was not based on historical returns, but instead is based on a forward-looking capital market economic model. The allocation policy's description of each asset class was used to map the target allocation to the asset classes shown below. Each asset class assumption is based on a consistent set of underlying assumptions and includes an adjustment for the inflation assumption. The target allocation and best estimates of arithmetic and geometric real rates of return for each major asset class are summarized in the following table:

Asset Class	Target Allocation (1)	Annual Arithmetic Return	Compound Annual (Geometric) Return	Standard Deviation
Cash	1.00%	3.30%	3.30%	1.20%
Fixed income	18.00%	4.10%	4.10%	3.50%
Global equities	54.00%	8.00%	6.80%	16.50%
Real estate	10.00%	6.70%	6.10%	11.70%
Private equity	11.00%	11.20%	8.40%	25.80%
Strategic investments	6.00%	5.90%	5.70%	6.70%
Total	100.00%			
Assumed Inflation, mean			2.60%	1.70%

(1) As outlined in the Pension Plan's investment policy

Discount Rate

The discount rate used to measure the total pension liability was 6.90%. The Pension Plan's fiduciary net position was projected to be available to make all projected future benefit payments of current active and inactive employees. Therefore, the discount rate for calculation the total pension liability is equal to the long-term expected rate of return.

NOTE 10 DEFINED BENEFIT RETIREMENT PLANS (CONTINUED)

Sensitivity of the City's Proportionate Share of the Net Position Liability to Changes in the Discount Rate

The following represents the City's proportionate share of the net pension liability calculated using the discount rate of 6.90%, as well as what the City's proportionate share of the net pension liability would be if it were calculated using a discount rate that is one percentage point lower (5.90%) or one percentage point higher (7.90%) than the current rate:

	Discount Rate Minus 1% 5.90%	Current Discount Rate 6.90%	Discount Rate Plus 1% 7.90%
City's proportionate share of net pension liability (FRS)	\$ 5,324,742	\$ 3,080,262	\$ 1,205,736

Pension Plan Fiduciary Net Position

Detailed information regarding the Pension Plan's fiduciary net position is available in the separately issued FRS Pension Plan and Other State-Administered Systems Comprehensive Annual Financial Report.

Payables to the Pension Plan

At September 30, 2019, the City does not have any payables for outstanding contributions to the Pension Plan required for the fiscal year ended September 30, 2019.

HIS Plan

Plan Description

The HIS Plan is a cost-sharing multiple-employer defined benefit pension plan established under Section 112.363, Florida Statutes, and may be amended by the Florida legislature at any time. The benefit is a monthly payment to assist retirees of State-administered retirement systems in paying their health insurance costs and is administered by the Florida Department of Management Services, Division of Retirement.

Benefits Provided

For the fiscal year ended September 30, 2019, eligible retirees and beneficiaries received a monthly HIS payment of \$5 for each year of creditable service completed at the time of retirement, with a minimum HIS payment of \$30 and a maximum HIS payment of \$150 per month. To be eligible to receive these benefits, a retiree under a State-administered retirement system must provide proof of health insurance coverage, which may include Medicare.

Contributions

The HIS Plan is funded by required contributions from FRS participating employers as set by the Florida Legislature. Employer contributions are a percentage of gross compensation for all active FRS members. For the fiscal year ended September 30, 2019, the HIS contribution for the period October 1, 2018 through June 30, 2019 and from July 1, 2019 through September 30, 2019 was 1.66% and 1.66%, respectively. The City contributed 100% of its statutorily required contributions for the current and preceding three years. HIS Plan contributions are deposited in a separate trust fund from which payments are authorized. HIS Plan benefits are not guaranteed and are subject to annual legislative appropriation. In the event legislative appropriation or available funds fail to provide full subsidy benefits to all participants, benefits may be reduced or cancelled.

The City's contributions to the HIS Plan totaled \$31,999 for the fiscal year ended September 30, 2019.

NOTE 10 DEFINED BENEFIT RETIREMENT PLANS (CONTINUED)

Pension Liabilities, Pension Expense, and Deferred Outflows of Resources and Deferred Inflows of Resources Related to Pensions
At September 30, 2019, the City reported a liability of \$844,814 for its proportionate share of the HIS Plan's net pension liability. The net pension liability was measured as of June 30, 2019, and the total pension liability used to calculate the net pension liability was determined by an actuarial valuation as of July 1, 2019. The City's proportionate share of the net pension liability was based on the City's 2018-19 fiscal year contributions relative to the 2017-18 fiscal year contributions of all participating members. At June 30, 2019, the City's proportionate share was .00755 percent, which was an increase of .003456 percent from its proportionate share measured as of June 30, 2018.

For the fiscal year ended September 30, 2019, the City recognized pension expense of \$136,483. In addition, the City reported deferred outflows of resources and deferred inflows of resources related to pensions from the following sources:

Description	Deferred Outflow of Resources	Deferred Inflows of Resources
Change of assumptions	\$ 97,822	\$ 69,049
Differences between expected and actual experience	10,261	1,034
Net difference between projected and actual earnings on pension plan investments	545	-
Changes in proportion and differences between pension plan contributions and proportionate share of contributions	495,412	-
Pension plan contributions subsequent to the measurement date	7,537	-
	<u>\$ 611,577</u>	<u>\$ 70,083</u>

The deferred outflows of resources related to the HIS Plan, totaling \$7,537 resulting from City contributions to the HIS Plan subsequent to the measurement date, will be recognized as a reduction of the net pension liability in the fiscal year ended September 30, 2020. Other amounts reported as deferred outflows of resources and deferred inflows of resources related to the HIS Plan will be recognized in pension expense as follows:

Year Ended September 30,	
2020	\$ 120,112
2021	116,833
2022	98,907
2023	65,797
2024	64,016
Thereafter	68,292

NOTE 10 DEFINED BENEFIT RETIREMENT PLANS (CONTINUED)

Actuarial Assumptions

The total pension liability in the July 1, 2019, actuarial valuation was determined using the following actuarial assumptions, applied to all periods included in the measurement:

Inflation	2.60 %
Salary Increases	3.25 %, average, including inflation
Municipal Bond Rate	3.50 % net of pension plan investment expense

Mortality rates were based on the Generational RP-2000 with Projection Scale BB tables.

The actuarial assumptions used in the July 1, 2019, valuation were based on the results of an actuarial experience study for the period July 1, 2013 through June 30, 2018.

Discount Rate

The discount rate used to measure the total pension liability was 3.50%. In general, the discount rate for calculating the total pension liability is equal to the single rate equivalent to discounting at the long-term expected rate of return for benefit payments prior to the projected depletion date. Because the HIS benefit is essentially funded on a pay-as-you-go basis, the depletion date is considered to be immediate, and the single equivalent discount rate is equal to the municipal bond rate selected by the HIS Plan sponsor. The Bond Buyer General Obligation 20-Bond Municipal Bond Index was adopted as the applicable municipal bond index.

Sensitivity of the City's Proportionate Share of the Net Position Liability to Changes in the Discount Rate

The following represents the City's proportionate share of the net pension liability calculated using the discount rate of 3.50%, as well as what the City's proportionate share of the net pension liability would be if it were calculated using a discount rate that is one percentage point lower (2.50%) or one percentage point higher (4.50%) than the current rate:

	Discount Rate Minus 1% 2.50%	Current Discount Rate 3.50%	Discount Rate Plus 1% 4.50%
City's proportionate share of net pension liability (HIS)	\$ 964,399	\$ 844,814	\$ 745,214

Pension Plan Fiduciary Net Position

Detailed information regarding the HIS Plan's fiduciary net position is available in the separately issued FRS Pension Plan and Other State-Administered Systems Comprehensive Annual Financial Report.

NOTE 10 DEFINED BENEFIT RETIREMENT PLANS (CONTINUED)

Investment Plan

The SBA administers the defined contribution plan officially titled the FRS Investment Plan. The investment Plan is reported in the SBA's annual financial statements and in the State of Florida Comprehensive Annual Financial Report.

As provided in Section 121.4501, Florida Statutes, eligible FRS members may elect to participate in the Investment Plan in lieu of the FRS defined benefit plan. City employees participating in DROP are not eligible to participate in the Investment Plan. Employer and employee contributions, including amounts contributed to individual member's accounts, are defined by law, but the ultimate benefit depends in part on the performance of investment funds. Benefit terms, including contribution requirements, for the Investment Plan are established and may be amended by the Florida Legislature. The Investment Plan is funded with the same employer and employee contribution rates that are based on salary and membership class (Regular Class, Elected City Officers, etc.), as the Pension Plan. Contributions are directed to individual member accounts, and the individual members allocate contributions and account balances among various approved investment choices. Costs of administering the Investment Plan, including the FRS Financial Guidance Program, are funded through an employer contribution of 0.04 percent of payroll and by forfeited benefits of plan members. Allocations to the investment member's accounts during the 2019 fiscal year, as established by Section 121.72, Florida Statutes, are based on a percentage of gross compensation, by class, as follows: Regular class 6.30%, and Special Risk class 14.00%.

For all membership classes, employees are immediately vested in their own contributions and are vested after one year of service for employer contributions and investment earnings. If an accumulated benefit obligation for service credit originally earned under the Pension Plan is transferred to the Investment Plan, the member must have the years of service required for Pension Plan vesting (including the service credit represented by the transferred funds) to be vested for these funds and the earnings on the funds. Nonvested employer contributions are placed in a suspense account for up to five years. If the employee returns to FRS-covered employment within the five-year period, the employee will regain control over their account. If the employee does not return within the five-year period, the employee will forfeit the accumulated account balance. For the fiscal year ended September 30, 2019, the information for the amount of forfeitures was unavailable from the SBA; however, management believes that these amounts, if any, would be immaterial to the City.

After termination and applying to receive benefits, the member may rollover vested funds to another qualified plan, structure a periodic payment under the Investment Plan, receive a lump-sum distribution, leave the funds invested for future distribution, or any combination of these options. Disability coverage is provided; the member may either transfer the account balance to the Pension Plan when approved for disability retirement to receive guaranteed lifetime monthly benefits under the Pension Plan or remain in the Investment Plan and rely upon that account balance for retirement income.

The City did not have any employees who participated in the Investment Plan during 2019.

NOTE 10 DEFINED BENEFIT RETIREMENT PLANS (CONTINUED)

Municipal Firemen's Retirement Plan

The Municipal Firemen's Retirement Plan was established to conform to provisions of the Florida Statutes for all sworn firefighters. The Plan is a single-employer, defined benefit pension plan, and is administered by the City. There is no separately issued report on the Plan.

Firefighters attaining the age of 55 who have completed 10 or more creditable years of service or attaining the age of 52 who have completed 25 years of creditable service are entitled to annual benefits of 3% of their average final compensation times years of credited service. The Plan permits early retirement at the completion of 10 years of continuous service and attaining the age of 50 years. Active firefighters who retire disabled receive not less than 42% of their average monthly earnings at the time of disability.

Disability benefits are paid for ten years certain or life or recovery from disability. If a firefighter dies prior to retirement but has at least 10 years of contributing service, his or her beneficiary is entitled to the benefits payable to the firefighter at early or normal retirement age.

As of September 30, 2019, there was one retiree currently receiving benefits, and 1 terminated firefighter was entitled to benefits but not yet receiving them. Out of the 19 active volunteer firefighters, none have vested retirement benefits. Benefits and refunds are recognized when due and payable in accordance with the terms of the Plan.

Effective January 1, 1995, each firefighter is required by local ordinance to contribute five percent of his/her compensation to the plan. The City also contributes five percent of each plan member's compensation to the Plan. Additionally, the Plan is funded by a 1% state excise tax on all fire insurance premiums collected from policyholders insuring property within City limits. For the year ended September 30, 2019, the City collected \$25,566 in fire insurance premium taxes, which are reported as revenue in the General Fund. The City is required by State statute to contribute these taxes to the plan within 5 days of receipt. The corresponding contribution to the pension fund is reported as a fire department expenditure in the General Fund.

The City's contribution requirements are not actuarially determined, and the actuarial implication of the City's funding policy has also not been determined. There were no changes during the year ended September 30, 2019 in the method used to calculate or establish contribution requirements. Most administrative costs of the Plan are absorbed by the General Fund.

Actuarial valuations for the Plan are provided and paid for by the State of Florida Division of Retirement on a triennial basis. City management and the pension board of trustees do not believe the cost, which would have to be paid by the pension fund, of obtaining more frequent actuarial valuations or updates, is worth the benefit provided by current funding status information for this small pension fund. The latest actuarial valuation was performed as of October 1, 2016.

NOTE 10 DEFINED BENEFIT RETIREMENT PLANS (CONTINUED)

Aggregate Amounts of All Pension Plans

The aggregate amounts for all of the City's defined benefit pension plans at September 30, 2019 are as follows:

		Governmental Activities			
	Net Pension Asset (Liability)	Deferred Inflows	Deferred Outflows	Pension Expense	
FRS Pension Plan	\$ (2,923,138)	\$ (163,537)	\$ 1,753,213	\$ 720,621	
HIS Pension Plan	(801,694)	(66,506)	580,362	134,602	
	<u>\$ (3,724,832)</u>	<u>\$ (230,043)</u>	<u>\$ 2,333,575</u>	<u>\$ 855,223</u>	
		Business-type Activities			
	Net Pension Asset (Liability)	Deferred Inflows	Deferred Outflows	Pension Expense	
FRS Pension Plan	\$ (157,224)	\$ (8,796)	\$ 94,298	\$ 17,325	
HIS Pension Plan	(43,120)	(3,577)	31,215	1,881	
	<u>\$ (200,344)</u>	<u>\$ (12,373)</u>	<u>\$ 125,513</u>	<u>\$ 19,206</u>	

NOTE 11 DEFINED CONTRIBUTION RETIREMENT PLANS

ICMA 401a Retirement Plan

Effective January 1, 1997, the city established, by resolution, a money purchase plan and trust called "the City of Fruitland Park 401-a Plan" in the form of the ICMA Retirement Corporation Prototype Money Purchase Plan and Trust. The plan is a defined contribution pension plan administered by the ICMA Retirement Corporation. The City Commission must authorize plan amendments to benefit provisions or the obligation to make contributions.

All full-time employees at least 18 years of age are eligible to participate in this plan once they have completed a 90-day period of service. An employee does not become vested in any benefits until the completion of five years of service, at which time the employee becomes 100% vested. At September 30, 2019 there were 8 participants in the plan.

Contributions to the plan are made only by the City. The City will contribute a minimum of 2% of a participant's earnings, not including overtime or bonuses, into the plan. The City will contribute up to 5% into the plan, depending upon (and matching) a participant's contribution into the City's ICMA 457 deferred compensation plan.

Participant's separating from service with the City before the five-year vesting period of service is complete forfeit their entire account balance in the plan. The City may use forfeited amounts to reduce the City's required payment of contributions for current plan participants. During the year ended September 30, 2019, the city did not use any forfeited amounts for payment of contributions for current plan participants. At September 30, 2019, the City has \$1,923 in forfeited amounts included in plan assets that could be used toward future contributions. The City contributed \$12,904 to the plan for the year ended September 30, 2019.

NOTE 11 DEFINED CONTRIBUTION RETIREMENT PLANS (CONTINUED)

ICMA 457 Deferred Compensation Plan

The City offers its employees a deferred compensation plan created in accordance with Internal Revenue Code Section 457. The plan is administered by ICMA Retirement Corporation. The plan permits participants to defer a portion of their salary until future years. At September 30, 2019, the plan had 7 participants.

All of the City's employees are eligible to participate in the ICMA deferred compensation plan after completion of a three month probationary period upon their first date of employment. Participation is strictly on a voluntary basis. Participants become immediately 100% vested in contributions credited to their account.

The City does not make any contributions to this plan for participants who entered the plan after January 1, 1997. For those employees (1 as of September 30, 2019) participating in the plan on January 1, 1997, the City contributes a minimum of 2% and will match up to 5% of a participant's contribution into the plan.

Because the Plan Assets are held in trust for the exclusive benefit of plan participants and their beneficiaries, the Plan is not accounted for in the City's fund financials.

NOTE 12 OTHER POST-EMPLOYMENT BENEFITS

In accordance with Florida Statutes Section 112.0801, the City makes continued group health insurance through the City's current provider available to retirees and eligible dependents provided certain service requirements and normal age retirement requirements have been met. This benefit has no cost to the City, other than the implicit cost of including retirees in the group calculation. All premiums are paid by the retiree. The City has no retirees currently receiving benefits, and therefore no liability has been recorded.

NOTE 13 COMMITMENTS AND CONTINGENCIES

Litigation

The City is engaged in various liability claims incidental to the conduct of its general government operations at September 30, 2019. While the ultimate outcome of the litigation cannot be determined at this time, management believes that any amounts not covered by insurance, if any, resulting from these lawsuits would not materially affect the financial position of the City.

Risk Management

The City is exposed to various risks of loss related to torts; theft of, damage to and destruction of assets; errors and omissions; and natural disasters for which the City carries commercial insurance. There have been no significant reductions in insurance coverage from the prior year and settlements have not exceeded insurance coverage during the past three years.

NOTE 14 FUND BALANCE

At September 30, 2019 the City's governmental fund balances were as follows:

	General Fund	Community Redevelopment	Capital Projects	Total
Fund Balances				
Nonspendable				
Inventory	\$ 2,870	\$ -	\$ -	\$ 2,870
Prepaid	2,529	-	-	2,529
Spendable				
Restricted for:				
Police education	2,245	-	-	2,245
Police drug forfeiture	3,373			3,373
Police donations	2,706	-	-	2,706
Library donations	10,900			10,900
Recreation donations	10,000	-	-	10,000
Public safety capital improvements	2,500,476	-	-	2,500,476
Building Inspections	1,908,982	-	-	1,908,982
Police and fire fee refunds	36,423	-	-	36,423
Community redevelopment	-	150,554	-	150,554
Infrastructure	-	-	122,712	122,712
Committed to:				
Cemetery care	90,514	-	-	90,514
Paving	125,000			125,000
Abandoned property	34,750			34,750
Stormwater utility	189,489	-	-	189,489
Unassigned	2,558,442	-	-	2,558,442
	<u>\$ 7,478,699</u>	<u>\$ 150,554</u>	<u>\$ 122,712</u>	<u>\$ 7,751,965</u>



This Page Intentionally Left Blank

Required Supplementary Information

City of Fruitland Park, Florida
Required Supplementary Information
Year Ended September 30, 2019

Schedule of the City's Proportionate Share of Net Pension Liability
Florida Retirement System (FRS)
Last 10 Fiscal Years*

	<u>2019</u>	<u>2018</u>	<u>2017</u>	<u>2016</u>	<u>2015</u>
City's proportion of the net pension liability	0.008944203%	0.006285223%	0.005540833%	0.004877634%	0.002113934%
City's proportionate share of the net pension liability	\$ 3,080,262	\$ 1,893,142	\$ 1,638,941	\$ 1,231,606	\$ 273,043
City's covered payroll	\$ 1,835,308	\$ 1,072,321	\$ 1,032,609	\$ 896,744	\$ 607,451
City's proportionate share of the net pension liability as a percentage of its covered payroll	167.83%	176.55%	158.72%	137.34%	44.95%
Plan fiduciary net position as a percentage of the total pension liability	82.61%	84.26%	83.89%	84.88%	92.00%

Schedule of the City's Proportionate Share of Net Pension Liability
Health Insurance Subsidy (HIS)
Last 10 Fiscal Years*

	<u>2019</u>	<u>2018</u>	<u>2017</u>	<u>2016</u>	<u>2015</u>
City's proportion of the net pension liability	0.007550402%	0.004094430%	0.003214440%	0.002891564%	0.001195718%
City's proportionate share of the net pension liability	\$ 844,814	\$ 433,359	\$ 343,703	\$ 337,000	\$ 121,944
City's covered payroll	\$ 1,835,308	\$ 1,072,321	\$ 1,032,609	\$ 896,744	\$ 607,451
City's proportionate share of the net pension liability as a percentage of its covered payroll	46.03%	40.41%	33.28%	37.58%	20.07%
Plan fiduciary net position as a percentage of the total pension liability	2.63%	2.15%	1.64%	0.97%	0.50%

*Information for prior years not available.

City of Fruitland Park, Florida
Required Supplementary Information
Year Ended September 30, 2019

Schedule of City Contributions
Florida Retirement System (FRS)
Last 10 Fiscal Years*

	<u>2019</u>	<u>2018</u>	<u>2017</u>	<u>2016</u>	<u>2015</u>
Contractually required contribution	\$ 249,879	\$ 230,211	\$ 147,403	\$ 125,279	\$ 80,126
Contributions in relation to the contractually required contribution	(249,879)	(230,211)	(147,403)	(125,279)	(80,126)
Contribution deficiency (excess)	<u>\$ -</u>	<u>\$ -</u>	<u>\$ -</u>	<u>\$ -</u>	<u>\$ -</u>
City's covered payroll	\$ 1,904,291	\$ 1,200,561	\$ 1,048,564	\$ 929,056	\$ 815,906
Contributions as a percentage of covered payroll	13.12%	19.18%	14.06%	13.48%	9.82%

Schedule of City Contributions
Health Insurance Subsidy (HIS)
Last 10 Fiscal Years*

	<u>2019</u>	<u>2018</u>	<u>2017</u>	<u>2016</u>	<u>2015</u>
Contractually required contribution	\$ 31,999	\$ 35,406	\$ 17,292	\$ 15,422	\$ 15,422
Contributions in relation to the contractually required contribution	(31,999)	(35,406)	(17,292)	(15,422)	(15,422)
Contribution deficiency (excess)	<u>\$ -</u>	<u>\$ -</u>	<u>\$ -</u>	<u>\$ -</u>	<u>\$ -</u>
City's covered payroll	\$ 1,904,291	\$ 1,200,561	\$ 1,048,564	\$ 929,056	\$ 815,906
Contributions as a percentage of covered payroll	1.68%	2.95%	1.65%	1.66%	1.89%

*Information for prior years not available.



This Page Intentionally Left Blank

Individual Fund Schedules



This Page Intentionally Left Blank

City of Fruitland Park, Florida
Schedule of Revenues, Expenditures and Changes in Fund Balances - Budget and Actual
Capital Projects Fund
For the Year Ended September 30, 2019

	Budgeted Amounts		Actual Amounts, Budgetary Basis	Variance with Final Budget - Positive (Negative)
	Original	Final		
Revenues:				
Intergovernmental	\$ 766,174	\$ 766,174	\$ 690,943	\$ (75,231)
Investment Earnings	3,240	3,240	3,305	65
Total revenues	<u>769,414</u>	<u>769,414</u>	<u>694,248</u>	<u>(75,166)</u>
Expenditures:				
Debt Service:				
Principal	89,470	89,470	89,470	-
Interest	8,909	8,909	8,909	-
Capital Outlay	293,071	282,471	288,565	(6,094)
Total expenditures	<u>391,450</u>	<u>380,850</u>	<u>386,944</u>	<u>(6,094)</u>
Excess (deficiency) of revenues over expenditures	<u>377,964</u>	<u>388,564</u>	<u>307,304</u>	<u>(81,260)</u>
Other Financing Sources (Uses):				
Transfers Out	(377,964)	(388,564)	(388,527)	37
Total other financing sources and uses	<u>(377,964)</u>	<u>(388,564)</u>	<u>(388,527)</u>	<u>37</u>
Net change in fund balances	<u>-</u>	<u>-</u>	<u>(81,223)</u>	<u>(81,223)</u>
Fund balance, beginning	203,935	203,935	203,935	-
Fund balance, ending	<u>\$ 203,935</u>	<u>\$ 203,935</u>	<u>\$ 122,712</u>	<u>\$ (81,223)</u>



This Page Intentionally Left Blank

Statistical Section



This Page Intentionally Left Blank

STATISTICAL SECTION

This section of the City of Fruitland Park's comprehensive annual financial report presents detailed information as a context for understanding what the information in the financial statements, note disclosures, and required supplementary information says about the City's overall financial health.

<u>Contents</u>	<u>Page</u>
Financial Trends	
These schedules contain trend information to help the reader understand how the City financial performance and well-being changed over time.	55-65
Revenue Capacity	
These schedules contain information to help the reader assess the City's most significant revenue source, the property tax.	66-69
Debt Capacity	
These schedules present information to help the reader assess the affordability of the City's current levels of outstanding debt and ability to issue additional debt in the future.	70-73
Demographic and Economic Information	
These schedules offer demographic and economic indicators to help the reader understand the environment within which the City's financial activities take place.	74-76
Operating Information	
These schedules contain service and infrastructure data to help the reader understand how the information in the City's financial report relates to the services the City provides and the activities it performs.	77-79

Sources: Unless otherwise noted, the information in these schedules is derived from the comprehensive annual financial reports for the relevant year.

The City implemented GASB Statement 34 in fiscal year 2004; schedules presenting government-wide information include information beginning in that year.

The City implemented GASB Statement 44 in fiscal year 2006; schedules presenting demographic, operating, and capital asset statistics include information beginning in that year.

City of Fruitland Park, Florida
Net Position by Component
Last Ten Fiscal Years
(Accrual basis of accounting)

	Fiscal Year 2010	Fiscal Year 2011	Fiscal Year 2012	Fiscal Year 2013
Governmental Activities				
Net Investment in Capital Assets	\$ 3,736,577	\$ 3,747,502	\$ 3,761,497	\$ 3,770,300
Restricted for:				
Capital Improvement	511,486	628,116	686,753	784,445
Redevelopment Projects	697,955	311,594	319,799	374,440
Cemetery Care	115,772	120,692	122,232	134,322
Police	111,709	105,589	61,397	37,188
Building Inspections	-	-	-	-
Stormwater	72,005	81,447	112,695	147,323
Police/Fire Fee Refunds	-	-	-	-
Paving	-	-	-	-
Unrestricted	782,582	855,281	884,922	420,112
Total Governmental Activities				
Net Position	<u>\$ 6,028,086</u>	<u>\$ 5,850,221</u>	<u>\$ 5,949,295</u>	<u>\$ 5,668,130</u>
Business-Type Activities				
Net Investment in Capital Assets	\$ 3,227,368	\$ 3,256,788	\$ 3,483,711	\$ 3,160,882
Restricted for:				
Capital Improvements	498,407	596,573	417,745	442,989
Debt Service	63,122	63,426	63,737	64,057
Unrestricted	212,765	83,781	193,429	396,549
Total Business-type Activities				
Net Position	<u>\$ 4,001,662</u>	<u>\$ 4,000,568</u>	<u>\$ 4,158,622</u>	<u>\$ 4,064,477</u>
Net Investment in Capital Assets	\$ 6,963,945	\$ 7,004,290	\$ 7,245,208	\$ 6,931,182
Restricted for:				
Capital Improvements	1,009,893	1,224,689	1,104,498	1,227,434
Redevelopment Projects	697,955	311,594	319,799	374,440
Cemetery Care	115,772	120,692	122,232	134,322
Debt Service	63,122	63,426	63,737	64,057
Police	111,709	105,589	61,397	37,188
Building Inspections	-	-	-	-
Stormwater	72,005	81,447	112,695	147,323
Police/Fire Fee Refunds	-	-	-	-
Paving	-	-	-	-
Unrestricted	995,347	939,062	1,078,351	816,661
Total City of Fruitland Park				
Net Position	<u>\$ 10,029,748</u>	<u>\$ 9,850,789</u>	<u>\$ 10,107,917</u>	<u>\$ 9,732,607</u>

Fiscal Year 2014	Fiscal Year 2015	Fiscal Year 2016	Fiscal Year 2017	Fiscal Year 2018	Fiscal Year 2019
\$ 3,780,058	\$ 4,183,155	\$ 4,177,487	\$ 4,211,022	\$ 6,257,821	\$ 7,312,155
930,676	1,235,269	2,384,629	3,148,361	2,796,780	2,644,088
366,424	447,109	215,355	126,496	24,929	150,554
142,522	80,002	68,766	83,280	87,341	-
32,366	19,758	8,788	4,399	5,102	8,324
-	142,323	1,049,582	1,996,988	1,913,413	1,908,982
176,947	213,803	251,781	290,259	330,803	-
130,379	112,757	94,069	70,510	70,510	36,423
-	-	-	-	50,000	-
207,620	331,320	(31,531)	(116,536)	(40,707)	1,271,599
<u>\$ 5,766,992</u>	<u>\$ 6,765,496</u>	<u>\$ 8,218,926</u>	<u>\$ 9,814,779</u>	<u>\$ 11,495,992</u>	<u>\$ 13,332,125</u>
\$ 3,014,579	\$ 3,055,102	\$ 3,329,022	\$ 3,930,652	\$ 5,263,430	\$ 5,339,711
187,846	268,407	549,313	546,670	601,912	823,200
64,384	37,367	64,721	45,304	46,415	48,676
648,436	388,804	242,991	321,573	(481,825)	(395,592)
<u>\$ 3,915,245</u>	<u>\$ 3,749,680</u>	<u>\$ 4,186,047</u>	<u>\$ 4,844,199</u>	<u>\$ 5,429,932</u>	<u>\$ 5,815,995</u>
\$ 6,794,637	\$ 7,238,257	\$ 7,506,509	\$ 8,141,674	\$ 11,521,251	\$ 12,651,866
1,118,522	1,503,676	2,933,942	3,695,031	3,398,692	3,467,288
366,424	447,109	215,355	126,496	24,929	150,554
142,522	80,002	68,766	83,280	87,341	-
64,384	37,367	64,721	45,304	46,415	48,676
32,366	19,758	8,788	4,399	5,102	8,324
-	142,323	1,049,582	1,996,988	1,913,413	1,908,982
176,947	213,803	251,781	290,259	330,803	-
130,379	112,757	94,069	70,510	70,510	36,423
-	-	-	-	50,000	-
856,056	720,124	211,460	205,037	(522,532)	876,007
<u>\$ 9,682,237</u>	<u>\$ 10,515,176</u>	<u>\$ 12,404,973</u>	<u>\$ 14,658,978</u>	<u>\$ 16,925,924</u>	<u>\$ 19,148,120</u>

City of Fruitland Park, Florida
Changes in Net Position
Last Ten Fiscal Years
(Accrual basis of accounting)

	Fiscal Year 2010	Fiscal Year 2011	Fiscal Year 2012	Fiscal Year 2013
Expenses				
Governmental Activities:				
General Government	\$ 872,323	\$ 1,113,962	\$ 821,330	\$ 1,265,453
Public Safety	1,550,621	1,411,552	1,460,689	1,347,613
Transportation	366,990	426,154	707,159	342,471
Sanitation/Other Utility	448,014	429,297	780,765	450,306
Culture and Recreation	558,258	526,532	488,131	484,525
Interest on Long-term Debt	17,495	11,973	6,249	1,870
Total Governmental Activities Expenses	3,813,701	3,919,470	4,264,323	3,892,238
Business-Type Activities:				
Water Utility	649,113	572,667	599,304	744,457
Sewer Utility	364,080	277,985	209,103	332,126
Recreation Programs	18,899	18,490	28,308	29,163
Total Business-Type Activities Expenses	1,032,092	869,142	836,715	1,105,746
Total Expenses	\$ 4,845,793	\$ 4,788,612	\$ 5,101,038	\$ 4,997,984
Program Revenues				
Governmental Activities:				
Charges for Services:				
General Government	\$ 50,483	\$ 62,532	\$ 45,703	\$ 70,305
Public Safety	318,461	287,375	293,282	276,568
Transportation	-	-	2,335	-
Sanitation/Other Utility	488,063	486,420	504,210	538,537
Culture and Recreation	30,475	35,302	33,179	30,282
Operating Grants and Contributions	100,267	89,210	80,987	76,471
Capital Grants and Contributions	91,892	49,133	681,142	26,576
Total Governmental Activities Program Revenues	1,079,641	1,009,972	1,640,838	1,018,739
Business-Type Activities:				
Charges for Services:				
Water Utility	542,438	588,343	645,894	598,184
Sewer Utility	104,851	117,859	109,829	343,482
Recreation Programs	22,200	27,665	34,855	40,420
Operating Grants and Contributions	-	-	-	-
Capital Grants and Contributions	45,492	235,835	386,625	24,390
Total Business-Type Activities Program Revenues	714,981	969,702	1,177,203	1,006,476
Total Program Revenues	\$ 1,794,622	\$ 1,979,674	\$ 2,818,041	\$ 2,025,215
Net Revenue (Expense)				
Governmental Activities	\$ (2,734,060)	\$ (2,909,498)	\$ (2,623,485)	\$ (2,873,499)
Business-Type Activities	(317,111)	100,560	340,488	(99,270)
Total Net Expense	\$ (3,051,171)	\$ (2,808,938)	\$ (2,282,997)	\$ (2,972,769)

Fiscal Year 2014	Fiscal Year 2015	Fiscal Year 2016	Fiscal Year 2017	Fiscal Year 2018	Fiscal Year 2019
\$ 737,827	\$ 898,643	\$ 1,043,212	\$ 1,223,914	\$ 1,476,413	\$ 1,347,411
1,672,643	2,110,533	3,097,472	3,550,072	3,442,497	4,208,592
363,034	324,333	291,644	359,857	727,956	408,720
471,391	475,618	462,909	500,773	504,421	525,294
515,382	577,976	726,059	822,451	905,359	942,796
170	4,118	3,658	15,728	14,958	16,732
3,760,447	4,391,221	5,624,954	6,472,795	7,071,604	7,449,545
673,008	710,615	682,501	820,795	1,116,962	1,671,164
204,558	219,554	320,984	326,422	-	-
37,344	37,712	32,561	26,388	31,919	32,067
914,910	967,881	1,036,046	1,173,605	1,148,881	1,703,231
\$ 4,675,357	\$ 5,359,102	\$ 6,661,000	\$ 7,646,400	\$ 8,220,485	\$ 9,152,776
\$ 361,584	\$ 398,065	\$ 133,506	\$ 74,708	\$ 87,151	\$ 81,289
134,130	981,400	2,337,768	2,321,225	1,301,808	1,639,824
1,431	4,128	6,884	7,206	7,524	1,251
553,905	512,650	569,969	600,056	613,348	628,083
31,387	27,173	44,629	42,743	34,327	33,987
77,493	68,394	225,174	209,836	385,354	479,557
19,653	466,669	996,949	974,208	1,529,237	784,284
1,179,583	2,458,479	4,314,879	4,229,982	3,958,749	3,648,275
590,322	593,028	650,406	785,816	943,199	1,090,233
118,385	127,132	125,122	124,408	-	-
47,125	49,844	36,342	36,267	40,816	44,543
-	-	-	904,997	-	-
22,097	140,976	433,074		587,074	358,948
777,929	910,980	1,244,944	1,851,488	1,571,089	1,493,724
\$ 1,957,512	\$ 3,369,459	\$ 5,559,823	\$ 6,081,470	\$ 5,529,838	\$ 5,141,999
\$ (2,580,864)	\$ (1,932,742)	\$ (1,310,075)	\$ (2,242,813)	\$ (3,112,855)	\$ (3,801,270)
(136,981)	(56,901)	208,898	677,883	422,208	(209,507)
\$ (2,717,845)	\$ (1,989,643)	\$ (1,101,177)	\$ (1,564,930)	\$ (2,690,647)	\$ (4,010,777)

Continues on the next page

City of Fruitland Park, Florida
Changes in Net Position
Last Ten Fiscal Years
(Accrual basis of accounting)

	Fiscal Year 2010	Fiscal Year 2011	Fiscal Year 2012	Fiscal Year 2013
General Revenues and Transfers				
Governmental Activities:				
Property Taxes	\$ 1,045,330	\$ 910,495	\$ 812,503	\$ 818,830
CRA Property Tax	-	-	-	-
Sales Taxes / Public Service Tax	471,136	495,503	522,526	531,599
Franchise and Utility Taxes	957,318	918,839	899,013	961,164
Excise Taxes	256,671	262,152	272,538	269,926
Intergovernmental	-	-	-	-
Misc	-	-	-	-
Unrestricted Investment Earnings	26,994	22,626	9,474	3,819
Gain on Sale of Capital Assets	-	5,964	-	-
Transfers	(92,521)	116,054	206,505	6,996
Total Governmental Activities	2,664,928	2,731,633	2,722,559	2,592,334
Business-Type Activities:				
Unrestricted Investment Earnings	40,156	14,400	24,071	12,121
Gain on Sale of Asset	-	-	-	-
Transfers	92,521	(116,054)	(206,505)	(6,996)
Total Business-Type Activities	132,677	(101,654)	(182,434)	5,125
Total General Revenues and Transfers	\$ 2,797,605	\$ 2,629,979	\$ 2,540,125	\$ 2,597,459
Change in Net Position				
Governmental Activities	\$ (69,132)	\$ (177,865)	\$ 99,074	\$ (281,165)
Business-Type Activities	(184,434)	(1,094)	158,054	(94,145)
Total Change in Net Position	\$ (253,566)	\$ (178,959)	\$ 257,128	\$ (375,310)

Fiscal Year 2014	Fiscal Year 2015	Fiscal Year 2016	Fiscal Year 2017	Fiscal Year 2018	Fiscal Year 2019
\$ 824,299	\$ 896,623	\$ 786,546	\$ 1,156,520	\$ 1,884,821	\$ 2,567,649
-	-	227,253	219,109	237,351	333,847
574,586	613,859	-	-	1,050,827	1,038,000
969,683	993,463	1,124,153	1,475,550	653,135	679,339
285,106	302,909	-	-	-	-
-	-	773,185	806,551	883,370	1,386,780
-	-	165,510	85,452	121,767	83,049
3,506	3,422	15,210	43,948	99,424	139,801
11,805	1,850	-	-	-	-
10,741	119,120	(302,389)	51,536	(136,627)	(591,062)
2,679,726	2,931,246	2,789,468	3,838,666	4,794,068	5,637,403
(1,510)	10,456	13,289	31,625	19,023	4,508
		1,622		7,875	-
(10,741)	(119,120)	302,389	(51,536)	136,627	591,062
(12,251)	(108,664)	317,300	(19,911)	163,525	595,570
\$ 2,667,475	\$ 2,822,582	\$ 3,106,768	\$ 3,818,755	\$ 4,957,593	\$ 6,232,973
\$ 98,862	\$ 998,504	\$ 1,479,373	\$ 1,595,853	\$ 1,681,213	\$ 1,836,133
(149,232)	(165,565)	526,198	658,152	585,733	386,063
\$ (50,370)	\$ 832,939	\$ 2,005,571	\$ 2,254,005	\$ 2,266,946	\$ 2,222,196

City of Fruitland Park, Florida
Fund Balances - Governmental Funds
Last Ten Fiscal Years
(Modified accrual basis of accounting)

	<u>2010</u>	<u>2011</u>	<u>2012</u>	<u>2013</u>
General Fund				
Nonspendable	\$ -	\$ 25,345	\$ 24,325	\$ 4,143
Restricted	-	366,630	246,497	244,068
Reserved	607,249	-	-	-
Committed	-	202,139	234,927	281,645
Unreserved	766,608	-	-	-
Unassigned	-	851,850	896,002	979,316
Total General Fund	<u>\$ 1,373,857</u>	<u>\$ 1,445,964</u>	<u>\$ 1,401,751</u>	<u>\$ 1,509,172</u>
All Other Governmental Funds				
Restricted	\$ -	\$ 678,669	\$ 821,452	\$ 952,005
Reserved	950,568	-	-	-
Unreserved, reported in:				
Special revenue funds	-	-	-	-
Capital projects funds	-	-	-	-
Total all other governmental funds	<u>\$ 950,568</u>	<u>\$ 678,669</u>	<u>\$ 821,452</u>	<u>\$ 952,005</u>

2014	2015	2016	2017	2018	2019
\$ 2,831	\$ 22,012	\$ 259,413	\$ 5,805	\$ 3,600	\$ 5,399
389,278	968,040	2,842,591	4,624,870	4,581,870	4,475,105
-	-	-	-	-	-
319,469	293,805	320,547	373,539	468,144	439,753
-	-	-	-	-	-
168,941	287,710	13,880	471,116	814,491	2,558,442
<u>\$ 880,519</u>	<u>\$ 1,571,567</u>	<u>\$ 3,436,431</u>	<u>\$ 5,475,330</u>	<u>\$ 5,868,105</u>	<u>\$ 7,478,699</u>
\$ 1,070,567	\$ 989,176	\$ 909,832	\$ 721,884	\$ 228,864	\$ 273,266
-	-	-	-	-	-
-	-	-	-	-	-
-	-	-	-	-	-
<u>\$ 1,070,567</u>	<u>\$ 989,176</u>	<u>\$ 909,832</u>	<u>\$ 721,884</u>	<u>\$ 228,864</u>	<u>\$ 273,266</u>

City of Fruitland Park, Florida
Changes in Fund Balances - Governmental Funds
Last Ten Fiscal Years
(Modified accrual basis of accounting)

	2010	2011	2012	2013
Revenues				
Taxes	\$ 2,240,183	\$ 2,131,406	\$ 2,041,898	\$ 2,118,727
Licenses and Permits	50,576	22,681	31,890	41,446
Intergovernmental Revenues	807,693	671,529	1,317,217	634,722
Charges for Services	615,395	680,152	738,772	773,687
Fines and Forfeitures	176,977	109,903	81,118	58,885
Investment Earnings	26,994	22,626	9,474	3,819
Miscellaneous	52,313	67,472	45,861	70,699
Total Revenues	3,970,131	3,705,769	4,266,230	3,701,985
Expenditures				
General Government	965,583	1,175,409	864,126	790,364
Public Safety	1,421,232	1,317,661	1,453,169	1,394,174
Transportation	337,216	394,143	246,107	265,763
Sanitation/Other Utility	448,014	429,297	421,815	450,306
Culture and Recreation	504,703	456,868	425,421	431,473
Capital Outlay	348,022	96,010	805,324	19,624
Debt Service:				
Principal	137,074	142,435	148,014	117,300
Interest	21,127	15,756	10,189	4,422
Total Expenditures	4,182,971	4,027,579	4,374,165	3,473,426
Excess (Deficiency) of Revenues over (under) Expenditures	(212,840)	(321,810)	(107,935)	228,559
Other Financing Sources (Uses)				
Capital Lease Financing	-	-	-	-
Transfers in	434,607	359,406	336,866	66,936
Transfers out	(527,128)	(243,352)	(130,361)	(59,940)
Sale of Capital Assets	-	5,964	-	2,419
Total Other Financing Sources (Uses)	(92,521)	122,018	206,505	9,415
Net Change in Fund Balances	\$ (305,361)	\$ (199,792)	\$ 98,570	\$ 237,974
Debt service as a percentage of noncapital expenditures	4.3%	4.2%	4.4%	3.7%

	2014	2015	2016	2017	2018	2019
\$	2,162,243	\$ 2,267,017	\$ 2,538,237	\$ 3,255,809	\$ 3,826,134	\$ 4,618,835
	47,558	942,358	2,352,455	2,304,030	662,241	690,290
	656,207	708,718	624,814	732,694	2,684,313	2,526,332
	683,389	673,500	1,691,320	1,559,772	1,471,076	1,786,260
	38,522	27,840	14,927	18,417	19,744	32,173
	3,821	3,422	15,210	43,948	99,424	139,801
	332,306	742,934	183,860	102,442	126,512	83,049
	3,924,046	5,365,789	7,420,823	8,017,112	8,889,444	9,876,740
	1,315,865	1,043,171	964,945	875,715	1,082,715	1,061,745
	1,651,946	2,161,552	2,917,663	3,104,480	3,203,834	3,626,504
	332,345	286,238	239,397	281,696	635,359	338,337
	471,391	475,618	462,909	500,773	504,421	525,294
	456,471	519,682	643,306	757,750	2,752,169	1,792,796
	228,495	502,481	582,453	725,072	576,185	459,842
	-	28,603	27,033	72,083	84,232	123,345
	170	2,696	4,266	15,989	14,147	9,876
	4,456,683	5,020,041	5,841,972	6,333,558	8,853,062	7,937,739
	(532,637)	345,748	1,578,851	1,683,554	36,382	1,939,001
	-	142,939	116,536	115,861	-	293,460
	60,633	201,808	167,974	169,031	375,206	89,856
	(49,892)	(82,688)	(77,841)	(117,495)	(511,833)	(667,321)
	11,805	1,850			-	-
	22,546	263,909	206,669	167,397	(136,627)	(284,005)
\$	(510,091)	\$ 609,657	\$ 1,785,520	\$ 1,850,951	\$ (100,245)	\$ 1,654,996
	0.0%	0.7%	0.6%	1.6%	1.5%	2.1%

City of Fruitland Park, Florida
General Governmental Revenue by Source
Last Ten Fiscal Years
(Modified accrual basis of accounting)

Fiscal Year	Property Taxes	Infra- structure Sales Surtax	Excise Tax	Franchise Fees	Utility Taxes	Communications Services Tax	Total Taxes
2010	780,427	314,320	117,820	389,291	376,196	153,352	2,131,406
2011	698,287	328,648	115,950	346,938	361,385	190,690	2,041,898
2012	716,857	328,366	112,340	370,066	369,685	221,413	2,118,727
2013	719,536	353,896	119,128	389,734	383,864	196,085	2,162,243
2014	768,062	380,103	125,389	395,032	410,032	188,740	2,267,358
2015	788,159	400,285	148,201	374,595	561,333	189,315	2,461,888
2017	1,156,726	404,630	135,200	585,572	658,421	231,557	3,172,106
2018	1,887,333	422,658	130,802	353,135	842,160	208,666	3,844,754
2019	2,567,649	690,943	153,511	424,088	874,174	163,825	4,874,190

City of Fruitland Park, Florida
Estimated Just Value and Taxable (Assessed) Value of Property
 Last Ten Fiscal Years

FISCAL YEAR	REAL PROPERTY		PERSONAL PROPERTY		TOTAL		DIRECT TAX RATE	TAXABLE VALUE PERCENTAGE OF JUST VALUE
	ESTIMATED JUST VALUE	TAXABLE VALUE	ESTIMATED JUST VALUE	TAXABLE VALUE	ESTIMATED JUST VALUE	TAXABLE VALUE		
2010	268,807,843	190,360,656	11,984,667	7,989,575	280,792,510	198,350,231	4.36	70.64%
2011	245,295,181	174,746,180	11,527,662	7,542,665	256,822,843	182,288,845	4.36	70.98%
2012	222,183,352	158,742,662	11,351,352	7,201,748	233,534,704	165,944,410	4.328	71.06%
2013	N/A	151,764,456	N/A	6,414,330	N/A	158,178,786	4.644	N/A
2014	209,221,512	149,143,487	10,454,094	6,477,414	219,675,606	155,620,901	4.737	70.84%
2015	219,581,454	160,030,405	10,443,710	6,479,383	230,025,164	166,509,788	4.737	72.39%
2016	226,479,994	163,951,384	11,868,328	8,065,888	238,348,322	171,725,009	4.737	72.05%
2017	621,043,088	484,905,998	10,685,477	6,723,190	631,728,565	491,629,188	3.9863	77.82%
2018	870,128,033	672,784,033	11,697,831	7,367,442	881,825,864	680,151,475	3.9134	77.13%
2019	970,883,303	739,383,582	12,648,770	8,378,820	983,532,073	747,762,402	3.9134	76.03%

Source-Lake County Property Appraiser's Office

The property appraiser is required to physically inspect the property at least once every 5 years. Homesteaded property is reassessed annually on January 1. Any change resulting from such reassessment shall not exceed the lower of 3% of the prior year's assessed value or the percentage change in percentage change in the Consumer Price Index for All Urban Consumers, U.S. City Average, all items 1967=100, or successor reports for the preceding calendar year as initially reported by the United States Department of Labor, Bureau of Labor Statistics.

The estimated just value is adjusted down to the taxable value due to governmental exemptions, widows/widowers exemption, disability/blind exemption, institutional exemption for charitable, religious, scientific, literary and educational, \$25,000 homestead exemption, additional \$25,000 homestead exemption age 65 and older and the homestead assessment differential (just value minus capped value).

City of Fruitland Park, Florida
Property Tax Rates - Direct and Overlapping Governments
Per \$1,000 of Assessed Value
Last Ten Fiscal Years

Fiscal Year	City Direct Rate	OVERLAPPING RATES						Total Taxes
		County School District	Lake County BCC	Lake County Water Authority	St John's Water Management District	Ambulance District	Hospital District	
2010	4.360	7.532	4.761	0.213	0.416	0.465	1.000	18.7470
2011	4.360	7.523	4.841	0.241	0.416	0.385	1.000	18.7660
2012	4.328	7.394	4.841	0.241	0.331	0.385	1.000	18.5210
2013	4.644	7.320	4.921	0.256	0.331	0.385	1.000	18.8570
2014	4.737	7.170	4.921	0.256	0.328	0.385	1.000	18.7970
2015	4.737	7.246	5.546	0.256	0.316	0.463	1.000	19.5640
2016	4.737	7.197	5.305	0.255	0.349	0.463	1.000	19.3062
2017	3.9863	6.603	5.118	0.255	0.313	0.463	1.000	17.7387
2018	3.9134	6.355	5.118	0.490	0.296	0.463	0.980	17.6148
2019	3.9134	6.883	5.073	0.356	0.280	0.463	0.950	17.9185

Source - Lake County Property Appraiser

Florida Statutes permit municipalities to levy property taxes up to 10 mills. The City's direct rate does not have any separate components.

Overlapping rates are those of county and local governments that apply to property owners within the City of Fruitland Park.

City of Fruitland Park, Florida
Principal Property Taxpayers
September 30, 2019
Current Year Compared to Nine Years Ago

<u>Taxpayer</u>	<u>Fiscal Year 2019</u>		<u>Fiscal Year 2010</u>	
	<u>Taxable Assessed Valuation</u>	<u>Percentage of Total Assessed Valuation</u>	<u>Taxable Assessed Valuation</u>	<u>Percentage of Total Assessed Valuation</u>
L & R PROPERTIES-FRUITLAND PARK LLC	\$ 4,443,282	0.65%	\$ 4,116,623	2.27%
SOUTHERN SPRING LAKE COVE LLC	4,379,258	0.64%	3,411,280	1.88%
B & D SELF STORAGE LLC	3,918,709	0.58%		
BELLE RIVE VENTURES LLC	2,742,342	0.40%		
FWB INVESTMENTS LTD	2,614,849	0.38%	1,947,288	1.07%
ETHEREDGE LP	2,490,744	0.37%	1,788,810	0.99%
RHODES ROBERT D &	2,421,218	0.36%	1,640,638	0.91%
PRESBYTERIAN RETIREMENT COMMUNITIES INC	2,278,480	0.33%		
WAL-MART STORES EAST LP	2,109,616	0.31%	1,998,623	1.10%
HASEMAN TERRY & KATHRYN A	2,036,465	0.30%		
ARMENTANO ENTERPRISES INC			1,769,055	0.98%
CRC PROPERTIES INC			1,680,040	0.93%
FRUITLAND PARK PROPERTY LLC	-		1,408,893	0.78%
LAKE SAUNDERS GROVES LAND LLP	-		1,197,221	0.66%
	<u>\$ 29,434,963</u>	<u>4.33%</u>	<u>\$ 20,958,471</u>	<u>11.56%</u>
TOTAL TAXABLE ASSESSED VALUATION	<u>\$ 680,151,475</u>		<u>\$ 181,246,865</u>	

Source - Lake County Property Appraiser

City of Fruitland Park, Florida
Property Tax Levies and Collections
 Last Ten Fiscal Years

Fiscal Year	Total Tax Levy	Current Tax Collections	Percent of Levy Collected	Delinquent Tax Collections	Total Tax Collections	Percent of Total Tax Collections to Tax Levy
2010	864,807	841,298	97.3%	30,232	871,530	100.8%
2011	794,779	773,372	97.3%	7,055	780,427	98.2%
2012	718,057	697,391	97.1%	896	698,287	97.2%
2013	734,614	714,578	97.3%	2,279	716,857	97.6%
2014	737,192	716,402	97.2%	3,134	719,536	97.6%
2015	788,774	765,346	97.0%	2,716	768,062	97.4%
2016	814,863	786,277	96.5%	269	786,546	96.5%
2017	1,209,303	1,153,923	95.4%	2,597	1,156,520	95.6%
2018	1,962,182	1,884,203	96.0%	618	1,884,821	96.1%
2019	2,669,637	2,563,964	96.0%	3,685	2,567,649	96.2%

See **Note 13** for discounts allowed for early payment of property taxes.

City of Fruitland Park, Florida
Ratios of Outstanding Debt by Type
 Last Ten Fiscal Years

Fiscal Year	GOVERNMENTAL ACTIVITIES		BUSINESS-TYPE ACTIVITIES	Total Primary Government	Percentage of Personal Income	Per Capita
	Revenue Note	Capital Leases	Loans Payable			
2010	339,399	68,350	1,747,878	2,155,627	2.49%	522
2011	230,383	34,931	1,654,931	1,920,245	2.22%	498
2012	117,300	-	1,559,562	1,676,862	N/A	404
2013	-	-	2,081,588	2,081,588	N/A	498
2014	-	-	1,786,886	1,786,886	N/A	431
2015	-	114,336	1,669,674	1,784,010	1.77%	423
2016	-	321,875	4,035,589	4,357,464	N/A	N/A
2017	-	292,683	3,912,933	4,205,615	N/A	N/A
2018	-	163,385	3,644,401	3,807,786	N/A	N/A
2019	-	333,500	3,224,899	3,558,399	N/A	N/A

Details regarding the City's outstanding debt can be found in **Note 6** to the Financial Statements.

See pages 74 and 75 for personal income and population data.

N/A - Information is not available.

City of Fruitland Park, Florida
Legal Debt Margin
Last Ten Fiscal Years

The City of Fruitland Park, Florida has had no general bonded debt during the last ten fiscal years.

City of Fruitland Park, Florida
Direct and Overlapping Governmental Activities Debt
As of September 30, 2019

Governmental Unit	Debt Outstanding	Estimated Percentage Applicable	Estimated Share of Overlapping Debt
Debt repaid with property taxes	\$ -	4.29%	\$ -
Other debt			-
Subtotal, overlapping debt			-
Direct debt			-
Total direct and overlapping debt			\$ -

Note: The City of Fruitland Park has no ordinance which limits general obligation debt to a percentage of assessed property values.

The estimated percentage applicable to the City of Fruitland Park is based upon City/Lake County population ratio.

City of Fruitland Park, Florida
Pledged-Revenue Debt Coverage
Infrastructure Sales Surtaxes
 Last Ten Fiscal Years

Fiscal Year	Infrastructure Sales Surtaxes Available for Debt Service	Debt Service Requirements			Coverage
		Principal	Interest	Total	
2010	296,393	105,096	16,590	121,686	2.44
2011	314,320	109,016	12,660	121,676	2.58
2012	328,648	113,083	8,605	121,688	2.70
2013	328,366	117,300	4,422	121,722	2.70
2014	353,896	-	170	170	N/A *
2015	380,103	-	-	-	N/A
2016	400,285	-	19,740	19,740	20.28
2017	404,630	-	58,250	58,250	6.95 **
2018	445,786	143,045	58,250	201,295	2.21 ***
2019	690,943	388,363	54,357	442,720	1.56

*City Hall paid off

** New Loan for LLSWR Interest only

***New Loan for LLSWR-10 Years

City of Fruitland Park, Florida
Fledge-Revenued Coverage
Utility Revenues
Last Ten Fiscal Years

Fiscal Year	Gross Revenues	Operating Expenses 1	Net Revenue Available for Debt Service	Debt Service Requirements			Coverage
				Principal	Interest	Total	
2010	647,289	835,458	(188,169)	90,585	47,083	137,668	0.00
2011	706,202	809,609	(103,407)	92,947	44,722	137,669	0.00
2012	755,723	767,017	(11,294)	95,369	42,299	137,668	0.00
2013	717,546	632,016	85,530	97,856	39,813	137,669	0.62
2014	708,707	629,842	78,865	100,408	37,260	137,668	0.57
2015	720,160	805,234	(85,074)	103,026	34,643	137,669	0.00
2016	775,528	824,943	(49,415)	105,713	31,956	137,668	0.00
2017	910,404	781,986	128,418	108,470	29,198	137,668	0.93
2018	1,049,291	843,321	205,970	111,300	26,368	137,668	1.50
2019	1,453,689	1,238,526	215,163	114,205	23,464	137,669	1.56

1 Utility operating expenses exclusive of depreciation but including transfers to the General Fund for administrative expenses.

Note: Beginning in fiscal year 2006, covenants on the State Revolving Fund loans require a coverage ratio of 1.15 to 1.

City of Fruitland Park, Florida
Demographic and Economic Statistics
 Last Ten Fiscal Years

Year	2010	2011	2012	2013	2014	2015	2016	2017	2018	2019
Population	4,129	3,853	4,148	4,182	4,153	4,214	4,274	7,291	8,963	10,094
Total Personal Income of all Fruitland Park Residents(in thousands)	\$ 86,416	\$ 86,483	N/A	\$ 84,363	N/A	\$ 100,554	N/A	N/A	N/A	N/A
Per Capita Personal Income	\$ 20,929	\$ 22,036	N/A	\$ 20,173	N/A	\$ 23,862	\$ 20,769	\$ 21,476	\$ 26,688	N/A
Median Age	41.7	41.9	42.0	42.0	45.1	45.0	47.0	N/A	N/A	N/A
School Enrollment Fruitland Park Elementary	632	623	640	656	656	646	762	742	751	745
Total Housing Units	1,739	1,772	1,662	1,662	N/A	1,793	1,928	2025	2920	N/A
Owner occupied	1,118	1,188	1,477	1,477	N/A	1,032	1,030	N/A	N/A	N/A
Renter occupied	414	359	469	469	N/A	566	680	N/A	N/A	N/A
Vacant	207	225	185	185	N/A	198	218	N/A	N/A	N/A
Lake County Unemployment Rate	11.9%	10.6%	8.9%	6.9%	5.4%	5.4%	4.5%	3.50%	2.90%	2.70%

Population from the Florida Bureau of Economic and Business Research (BEBR)
 Unemployment rate from the Florida Research and Data Base (<http://fred/labormarketinfo.com>)
 Median Age, and Housing Units from Metro Orlando
 Economic Development Commission
 Hometown Locator
 Per capita personal, total personal income from City-Data.com
 School enrollment from FP Elementary

N/A - Information not available.

City of Fruitland Park
Demographic Statistics
 Last Ten Fiscal Years

POPULATION

Year	City of Fruitland Park		Lake County	
	Population	% Change	Population	% Change
2010	4,129	3.80%	297,432	1.90%
2011	3,853	-1.07%	296,681	-0.13%
2012	4,148	7.11%	299,677	1.01%
2013	4,182	0.82%	308,034	2.78%
2014	4,153	-0.69%	309,736	0.55%
2015	4,214	1.47%	316,569	2.21%
2016	4,274	1.40%	323,985	2.29%
2017	7,291	41.38%	330,656	2.02%
2018	8,963	18.65%	341,905	3.29%
2019	10,094	11.20%	357,247	4.29%

LAKE COUNTY POPULATION DISTRIBUTION

Median age in Years		Age Distribution (Percentage)			
		0-17	18-44	45-64	65+
1980	43.2	17.8%	33.9%	22.9%	25.4%
1990	44.5	16.8%	33.7%	22.1%	27.4%
2000	45.0	17.1%	32.9%	23.7%	26.3%
2009	40.3	16.4%	30.8%	27.1%	25.7%
2011	47.9	13.5%	32.6%	29.3%	24.6%
2013	42.0	22.4%	26.1%	26.7%	24.8%
2014	46.0	21.8%	36.8%	15.2%	26.2%
2018	N/A	18.8%	29.7%	26.1%	25.4%
2019	36.6	N/A	N/A	N/A	N/A

Source - Bureau of Economic Business research, University of Florida

City of Fruitland Park, Florida

Principal Employers

September 30, 2019

<u>Employer</u>	<u>Employees</u>	<u>Rank</u>	<u>Percent of Total City Employment</u>
Wal-Mart	310	1	8.2%
Munn's Heating & Air	148	2	3.9%
Bill Bryan Chrysler	110	3	2.9%
Fruitland Park Elementary School	110	4	2.9%
City of Fruitland Park	94	5	2.5%
Phillips Buick/Pontiac	90	6	2.4%
Total	<u>862</u>		<u>22.8%</u>
Total City Employment	<u>3,780</u>		

Note:

(2019 figures unavailable, used 2018 figures, updated City figures)

- Total City Employment from Metro Orlando Economic Development

City of Fruitland Park, Florida
City Government Employees by Function
 Last Ten Fiscal Years

	2010	2011	2012	2013	2014	2015	2016	2017	2018	2019
General Government										
Legislative	10	9	11	11	11	10	10	10	10	13
Executive	3	3	3	3	3	3.5	3.5	3.5	4	5
Finance	4	4	4	4	4	4.5	4.5	4.5	5	4
Other General Government	1	1	1	1	1	1	1	1	1	1
Public Safety										
Police Department	23	22	21	21	21	20	20	23	27	30
Fire	25	20	20	21	24	26	26	25	27	27
Building Inspections	1	1	0	0	0	0	0	0	0	0
Transportation										
Roads and Streets	3	2	2	2	2	2	2	2	3	9
Culture/Recreation										
Library	7	6	6	6	6	6	6	7	8	11
Municipal Pool	8	8	7	7	7	8	8	8	10	11
Recreation										
Maintenance	2	2	1	1	1	2	2	2	2	3
Recreation Programs	3	2	2	2	2	3	3	3	4	5
Utilities										
Water	5	5	5	5	5	5	6	6	7	11
Sewer	1	0	0	0	0	1	1	1	2	2
Total Employees	<u>96</u>	<u>85</u>	<u>83</u>	<u>84</u>	<u>87</u>	<u>92</u>	<u>93</u>	<u>96</u>	<u>110</u>	<u>132</u>

Source: City Finance Department

City of Fruitland Park, Florida
Operating Indicators by Function and Activity
 Last Ten Fiscal Years

	2010	2011	2012	2013	2014	2015	2016	2017	2018	2019
Police Protection:										
Number of Sworn										
Police Officers	13	13	13	13	13	13	16	18	19	20
Number of Reserve										
Officers	5	4	4	4	4	2	2	2	1	1
Fire Protection:										
Number of Volunteer										
Firefighters	25	20	20	21	23	21	21	25	21	27
Building Inspections:										
Construction Permits:										
Commercials	1	0	1	1	1	9	3	1	3	1
Residential	6	3	3	6	9	529	861	792	110	105
Roads and Streets:										
Street Resurfacing										
(miles)	.7	.25	.0	.0	1.31	3	0	7	4	4
							0	1.6	1.2	1.1
Recreation:										
Number of City-wide										
events	2	2	2	3	3	3	3	4	4	4
Municipal Water System:										
Number of Consumers	1,739	1,749	1,779	1,785	1,799	1,784	1826	1922	1981	2039
New Connections	11	2	5	6	14	12	10	63	62	35

Source: Various City departments

City of Fruitland Park, Florida
Capital Asset and Infrastructure Statistics
 Last Ten Fiscal Years

	2010	2011	2012	2013	2014	2015	2016	2017	2018	2019
City Land Area (square miles)	6.6	6.6	6.83	6.83	6.83	6.84	7.274	7.287	7.295	7.31
Police Protection:										
Number of Stations	1	1	1	1	1	1	1	1	1	1
Number of Patrol Units	15	16	18	18	18	18	20	22	22	22
Fire Protection:										
Number of Stations	1	1	1	1	1	1	1	1	1	1
Number of Fire Trucks	2	2	2	2	2	2	2	2	2	2
Culture and Recreation:										
Number of Libraries	1	1	1	1	1	1	1	1	1	1
Number of Municipal Pools	1	1	1	1	1	1	1	1	1	1
Number of Parks	4	4	4	4	4	4	4	4	4	4
Number of Baseball/softball fields	3	3	3	3	3	3	3	3	3	3
Number of Soccer Fields	1	1	1	1	1	0	0	0	1	1
Number of Skate parks	1	1	1	1	1	1	1	1	1	1
Number of Community Centers	1	1	1	1	1	1	1	1	1	1
Municipal Water System:										
Wells	5	5	5	5	5	5	5	5	5	5
Water Towers	1	1	1	1	1	1	1	1	1	1
Ground Storage Tank							1	1	1	1
							Well 6 is out of service			

Note: The City implemented GASB 44 in fiscal year 2006.

Source: Various City departments

Other Reports

**INDEPENDENT AUDITOR'S REPORT ON INTERNAL CONTROL OVER FINANCIAL
REPORTING AND ON COMPLIANCE AND OTHER MATTERS BASED ON AN AUDIT
OF FINANCIAL STATEMENTS PERFORMED IN ACCORDANCE
WITH GOVERNMENT AUDITING STANDARDS**

The Honorable Mayor and City Council
City of Fruitland Park, Florida

We have audited, in accordance with auditing standards generally accepted in the United States of America and the standards applicable to financial audits contained in *Government Auditing Standards* issued by the Comptroller General of the United States, the financial statements of the governmental activities, business-type activities, each major fund, and the aggregate remaining fund information of the *City of Fruitland Park, Florida*, as of and for the year ended September 30, 2019, and the related notes to the financial statements, which collectively comprise the City's basic financial statements and have issued our report thereon dated March 20, 2020, which includes a qualified opinion on governmental activities for the exclusion of net pension assets related to the Municipal Firemen's Retirement Plan.

Internal Control Over Financial Reporting

In planning and performing our audit of the financial statements, we considered the *City of Fruitland Park, Florida's* internal control over financial reporting (internal control) to determine the audit procedures that are appropriate in the circumstances for the purpose of expressing our opinions on the financial statements, but not for the purpose of expressing an opinion on the effectiveness of *City of Fruitland Park's* internal control. Accordingly, we do not express an opinion on the effectiveness of the City's internal control over financial reporting.

Our consideration of internal control over financial reporting was for the limited purpose described in the preceding paragraph and was not designed to identify all deficiencies in internal control over financial reporting that might be material weaknesses or significant deficiencies and therefore, material weaknesses or significant deficiencies may exist that were not identified. However, as described in Appendix A, we identified certain deficiencies in internal control that we consider to be significant deficiencies.

A *deficiency in internal control* exists when the design or operation of a control does not allow management or employees, in the normal course of performing their assigned functions, to prevent, or detect and correct misstatements on a timely basis. A *material weakness* is a deficiency, or a combination of deficiencies, in internal control, such that there is a reasonable possibility that a material misstatement of the entity's financial statements will not be prevented, or detected and corrected on a timely basis.

A *significant deficiency* is a deficiency, or a combination of deficiencies, in internal control that is less severe than a material weakness, yet important enough to merit attention by those charged with governance. We consider the deficiencies described in Appendix A to be significant deficiencies.

Compliance and Other Matters

As part of obtaining reasonable assurance about whether *City of Fruitland Park's* financial statements are free from material misstatement, we performed tests of its compliance with certain provisions of laws, regulations, contracts and grant agreements, noncompliance with which could have a direct and material effect on the determination of financial statement amounts. However, providing an opinion on compliance with those provisions was not an objective of our audit and, accordingly, we do not express such an opinion. The result of our tests disclosed no instances of noncompliance, or other matters that are required to be reported under *Government Auditing Standards*.

City's Response to Findings

The City's response to the findings identified in our audit are described in the accompanying report. The City's response was not subjected to the auditing procedures applied in the audit of the financial statements and, accordingly, we express no opinion on it.

Purpose of this Report

The purpose of this report is solely to describe the scope of our testing of internal control and compliance and the results of that testing, and not to provide an opinion on the effectiveness of the entity's internal control or on compliance. This report is an integral part of an audit performed in accordance with *Government Auditing Standards* in considering the entity's internal control and compliance. Accordingly, this communication is not suitable for any other purpose.

McDiarmid Davis

Orlando, Florida
March 20, 2020

MANAGEMENT LETTER

Honorable Mayor and City Council
City of Fruitland Park, Florida

Report on the Financial Statements

We have audited the financial statements of the *City of Fruitland Park, Florida*, as of and for the fiscal year ended September 30, 2019, and have issued our report thereon dated March 20, 2020 which includes a qualified opinion on governmental activities for the exclusion of net pension assets related to the Municipal Firemen's Retirement Plan.

Auditor's Responsibility

We conducted our audit in accordance with auditing standards generally accepted in the United States of America; the standards applicable to financial audits contained in *Government Auditing Standards*, issued by the Comptroller General of the United States; and Chapter 10.550, Rules of the Florida Auditor General.

Other Reporting Requirements

We have issued our Independent Auditor's Report on Internal Control over Financial Reporting and on Compliance and Other Matters Based on an Audit of the Financial Statements Performed in Accordance with *Government Auditing Standards*; and Independent Accountant's Report on an examination conducted in accordance with *AICPA Professional Standards*, AT-C Section 315, regarding compliance requirements accordance with Chapter 10.550, rules of the Auditor General. Disclosures in those reports, which are dated March 20, 2020, should be considered in conjunction with this management letter.

Prior Audit Findings

Section 10.554(1)(i)1., Rules of the Auditor General, require that we determine whether or not corrective actions have been taken to address findings and recommendations made in the preceding annual financial audit report. Corrective actions have been taken to address findings and recommendations made in the preceding financial audit report, except as noted below.

Tabulation of Uncorrected Audit Findings		
Current Year Finding #	2018FY Finding #	2017FY Finding #
19-1	18-2	17-2

Official Title and Legal Authority

Section 10.554(1)(i)4., Rules of the Auditor General, requires that the name or official title and legal authority for the primary government and each component unit of the reporting entity be disclosed in this management letter, unless disclosed in the notes to the financial statements. This information has been disclosed in the notes to the financial statements.

Financial Condition and Management

Section 10.554(1)(i)5.a. and 10.556(7), Rules of the Auditor General, require us to apply appropriate procedures and communicate results of our determination as to whether or not the *City of Fruitland Park, Florida* has met one or more of the conditions described in Section 218.503(1), Florida Statutes, and to identify the specific conditions(s) met. In connection with our audit, we determined that the *City of Fruitland Park, Florida* did not meet any of the conditions described in Section 218.503(1), Florida Statutes.

Pursuant to Sections 10.554(1)(i)5.b. and 10.556(8), Rules of the Auditor General, we applied financial condition assessment procedures for the City. It is management's responsibility to monitor the *City of Fruitland Park, Florida's* financial condition, and our financial condition assessment was based in part on representations made by management and the review of financial information provided by same.

Section 10.554(1)(i)2., Rules of the Auditor General, requires that we communicate any recommendations to improve financial management. In connection with our audit, we did not have any such recommendations.

Additional Matters

Section 10.554(1)(i)3., Rules of the Auditor General, requires us to communicate noncompliance with provisions of contracts or grant agreements, or abuse, that have occurred, or are likely to have occurred, that have an effect on the financial statements that is less than material but which warrants the attention of those charged with governance. In connection with our audit, we did not have any such findings.

Purpose of this Letter

Our management letter is intended solely for the information and use of the Legislative Auditing Committee, members of the Florida Senate and the Florida House of Representatives, the Florida Auditor General, Federal and other granting agencies, the City Council, and applicable management, and is not intended to be and should not be used by anyone other than these specified parties.

McDiarmid Davis

Orlando, Florida
March 20, 2020

ML19-1 - Pension Actuarial Valuations

Finding

During our audit, it was noted that the Firemen's Retirement Trust obtains only triennial actuarial valuations, which do not include required information on the City's net pension asset or liability.

Criteria

Governmental accounting standards require valuations to be done every two years. Additionally, GASB Statement No. 68, requires the City to report the net pension asset or liability on the City's financial statements.

Cause

The State funds the actuarial valuations of the plan, and has not performed a valuation on the updated pension accounting standards.

Effect

City is not in compliance with governmental accounting standards.

Recommendation

We recommend that the City consider obtaining a separate actuarial valuation to be in compliance with governmental accounting standards.

ML 19-2 - Use of Purchase Orders When Required by Policy

Finding

During our audit, we noted purchase orders were not issued for disbursements to a certain vendor as required by policy.

Criteria

City purchasing policy allows disbursements without the use of purchase orders in certain circumstances, such as when the invoiced rates and/or amounts are covered by a contract approved by City Council.

Cause

Disbursements were made without purchase order under a contract that had expired in a prior period.

Effect

The City paid rates for services that had increased since the most recent negotiated contract and were therefore not properly approved by City Council.

Recommendation

We recommend the City evaluate all vendors with open contracts with the City to ensure contracts are current and valid. Expired contracts should be renegotiated and/or renewed to protect the City from unanticipated pricing increases.



934 North Magnolia Avenue, Suite 100
Orlando, Florida 32803
407-843-5406
www.mcdermittdavis.com

**INDEPENDENT ACCOUNTANT'S REPORT ON COMPLIANCE WITH
THE REQUIREMENTS OF SECTION 218.415, FLORIDA STATUTES**

The Honorable Mayor and City Council
City of Fruitland Park, Florida

We have examined City of Fruitland Park's (the City) compliance with the requirements of Section 218.415, Florida Statutes, during the year ended September 30, 2019. Management is responsible for the City's compliance with those requirements. Our responsibility is to express an opinion on the City's compliance based on our examination.

Our examination was conducted in accordance with attestation standards established by the American Institute of Certified Public Accountants and the standards applicable to attestation engagements contained in Government Auditing Standards issued by the Comptroller General of the United States and, accordingly, included examining, on a test basis, evidence about the City's compliance with those requirements and performing such other procedures as we considered necessary in the circumstances. We believe that our examination provides a reasonable basis for our opinion. Our examination does not provide a legal determination on the City's compliance with specified requirements.

In our opinion, City of Fruitland Park complied, in all material respects, with the aforementioned requirements for the year ended September 30, 2019.

McDermitt Davis

Orlando, Florida
March 20, 2020



This Page Intentionally Left Blank



506 W. Berckman Street
Fruitland Park, FL 34731

Tel. (352) 360-6727
Fax. (352) 360-6686

March 31, 2020

Auditor General
State of Florida
401 Claude Pepper Building
111 West Madison Street
Tallahassee, FL 32399-1450

Re: City of Fruitland Park FYE September 30, 2019
Dear Auditor General,

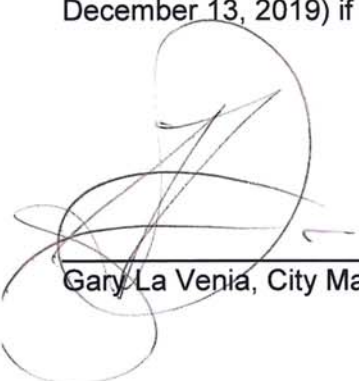
The management comments related to fiscal year ending September 30, 2019 were received by both the City Manager and the Finance Director.

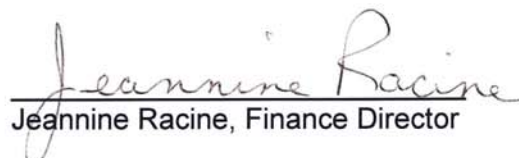
ML 19-1 Pension Actuarial Valuations

This pension is a very small pension for volunteer firefighters. The cost of an annual actuarial report would place a financial burden on this small trust, which consist of \$635,153 at the end of FY2019. Nonetheless we have decided to hire an actuary to complete an annual actuarial report in FY2020.

ML 19-2 Use of Purchase Orders When Required by Policy (contracts are approved by City Commission, contracts were expired, therefore not properly approved by City Commission therefore purchase orders were required)

Departments will have to do purchase orders for any payments over \$2500 (per purchasing policy updated December 13, 2019) if they cannot provide us with a copy of the current contract.



Gary La Venia, City Manager

Jeannine Racine, Finance Director